

ALL ABOUT *Magazine*

YOUR MONTHLY MAGAZINE FOR NEWPORT & THE SURROUNDING AREA

ISSUE 11 | AUGUST 2015

PICK UP YOUR
FREE
LOCAL COPY



Through the Garden Gate

Newport in Bloom's event attracted over 250 visitors and raised £2000

Age is not a Barrier

Hilary Stevenson, 71, talks of World and European triathlon success

CONNECTING LOCAL PEOPLE & BUSINESS AT HOME, ONLINE & MOBILE

DELIVERED FREE TO 15,000 LOCAL HOMES AND BUSINESSES EVERY MONTH





Garage Doors Direct Ltd

- GARAGE DOOR INSTALLS
- uPVC GATES & FENCING
- uPVC DECKING
- SMART WOOD
- FASCIAS & SOFFITS
- CANOPIES & CARPORTS
- TILED CONSERVATORY ROOFS

Call us for professional garage door installations and more



GARAGE DOORS & MORE

FREE NO OBLIGATION QUOTE - 01952 813088



REPLICA WOOD

- Tudor Style • Water Resistant • Money Saving • Lightweight
- Maintenance Free • Authentic Colours • Improves Appearance
- Adds Property Value • Long Lasting • Oak Grain

15 YEAR GUARANTEE



Call to find out more about our range of garage doors and other services we provide in Newport, Telford, Shrewsbury, Stafford and throughout Shropshire & Staffordshire

Garage Doors Direct Ltd 01952 813088

33 Upper Bar, Newport Shropshire TF10 7EH



Welcome

In this month's issue, John Myers of Shrewsbury and Newport Canals Trust, tells of how a small band of enthusiasts took to their canoes to help clear the canal in Newport.

Every month we ask if you have an interesting story to share, about your village, a group or individual? This month, Church Eaton Primary School share what's behind their double celebration.

The Hey Judes' sessions, promote the awe-inspiring musical talent in and around Newport. Nichola Leeper and Matthew Thomas explain how it all started.

Please get in touch. It's the often untold, local stories from past or present, that readers are finding 'informative, educational and often entertaining'.

Karen and Martin
@allaboutnewport | editor@allaboutnewport.co.uk

Contents

A selection of this month's features...

Lemon and Raspberry Layer Cake -

Hannah Tranter of Cookshop Newport shares her recipe for this gorgeous tower of lemon and raspberries - **p15**

A School with its Heart in the Community

- Ros Garner, Headteacher at Newport Girls' High School talks of their significant contribution to the local community - **p28**

Fifty Shades of Green - A Wheaton Aston couple, open their garden gate once again for charity, as part of the National Gardens Scheme - **p34**

Age is not a Barrier - Hilary Stevenson, 71, is a medal winning triathlete, who competes at the very pinnacle of her sport - **p38**

Bats - Sarah Gibson of Shropshire Wildlife, tells of the often unseen world of bats - **p41**

People & Places - Newport in Bloom's 'Through the Garden Gate' event attracted over 250 visitors and raised £2000. Double page photo feature - **p50 - 51**

Advertising & Editorial: 07973 385 929

Karen Woodcock: karen@allaboutnewport.co.uk

All About Newport Ltd, c/o MSA Ferndale, Suite 7, Nova House, Audley Avenue Enterprise Park, Newport, Shropshire, TF10 7DW

Deadlines - September 2015 Issue

Advertising & Editorial due by: **10th August 2015 (5pm)**

15,000 Copies - Every Month - Your Free Local Magazine

Copies are delivered to homes, businesses and selected pick-up points in Adbaston, Chetwynd Aston, Childs Ercall, Church Aston, Edgmond, Forton & Sutton, Gnosall, Gnosall Heath, Great Chatwell, Haughton & Church Eaton, Hinstock & Cheswardine, Knighton, Lilleshall, Lilleshall Hall & Golf Club, Newport, Muxton, Norbury, Outwoods, Moreton & Coley Mill, Sambrook and Chetwynd Park, Sheriffhales, Tibberton, Wheaton Aston and Woodseaves. Copies are also available from Waitrose Newport.



Open 24/7, 365 Days a Year



To or From Newport Town Centre

	Car	Minibus/8*	Minibus/16*
Telford Centre	£10.50	£16	£24
Stafford	£17.00	£26	£39
Wolverhampton	£20.50	£31	£46
Shrewsbury	£20.50	£31	£46
Gnosall	£9.00	£14	£21
Woodseaves	£8.50	£13	£22
Eccleshall	£10.50	£16	£24
Tibberton	£6.50	£10	£15
Edgmond	£4.50	£8	£12

* Cars seat 4 persons, minibuses seat 8 or 16. Fares are each way and are subject to an extra charge of up to 50% from midnight to 6am.

Airport Charges

	Car	Minibus/8*	Minibus/16*
Birmingham	£45.00	£65	£90
Manchester	£55.00	£80	£115
East Midlands	£55.00	£80	£115
Heathrow	£130.00	£175	£250

* Airport fares are each way when booked as return fares.

In Print & Digital

This magazine is available FREE for PC, iPad™, iPhone™ and Android™ smartphones?

<http://bit.ly/allaboutmagazine>



Digital Edition - Share

Download, Read and Share features and reviews where you see this logo.



Digital Edition - Video

Download, then watch bonus content where you see this logo.



Publisher: All About Newport Ltd

We gratefully acknowledge the support given from advertisers and editorial contributors in the All About Magazine. Whilst every effort has been made to ensure the accuracy of all information published within this magazine, the publishers cannot accept responsibility for loss, damage or omission caused by error in the printing of an advert or editorial.

Advertisements contained within this magazine are subject to the normal terms and conditions of the company, copies of which are available on request. Advertisements are accepted on the understanding that descriptions of goods and services are fair and accurate. The Publisher does not officially endorse any advertising material included within this publication, nor do they accept liability for omissions or incorrect insertions or any consequences arising therefrom. nor can they accept liability or responsibility for any consequence arising from use of this publication. The views expressed in All About Magazine by its contributors are not necessarily those of the publisher's.

©All About Newport Ltd. All rights reserved. Neither this publication nor any part of it may be reproduced, stored in a retrieval system or transmitted in any form or by any means, electronic, mechanical, photocopying, recording or otherwise, without the prior consent of All About Newport Ltd. c/o MSA Ferndale, Suite 7, Nova House, Audley Avenue Enterprise Park, Newport, Shropshire, TF10 7DW. Registered in England and Wales. Company No. 08144530. VAT Reg. No. 190405523.

All About Magazine is printed by Precision Colour Printing Ltd, Telford.



When you have finished reading your magazine, please share it with others.

Independent living...

by Mike Robin at www.freerange-living.co.uk

'Crops for dough, flowers for show' - and here on the organic eco micro-holding (small smallholding), the flowers are simply sumptuous this year, bringing smiles all round.

Running the semi-self-sufficient lifestyle here is not only about sustaining life but also exercising a degree of self-reliance and resilience. Life can be very convenient in modern times, and influenced considerably by large concerns - just a few supermarkets reportedly sell 95% of food in the UK. Modern house systems tend to be 'push-button' and of course the ubiquitous motor is everready for easy transportation.

The supermarkets have power in the marketplace, along with at times a 'big firm-itis' approach, and can use it to their advantage, and to the disadvantage of the rest of us (some supermarkets were prosecuted awhile ago for collusion in price fixing).

It may then help to retain as an individual some degree of 'self-reliance' to help counter any undue 'large' effect, becoming to some extent 'free-range'? (and in the 'growing your own' case here, to put a dent



into those large supermarket profits!) Sometimes the old chestnut comes up - 'not worth the effort to grow your own, easier to pop to the shops'. What?

And miss out on the anticipation of planning the crops, the successes (and failures) of each season, the seasonality effect of homegrown produce, the exercise and peaceful activity involved, the company (in the case of allotment growing) of like-minds, and, last but not least, the exquisite taste and texture of eating freshly-picked produce. **Not likely!**

COOKSHOP NEWPORT



Le Creuset
New range of Colours

Settling in!!

MORE CHOICE • MORE SPACE TO BROWSE

We are loving our new home at **64a High Street** (the old Post Office).

With more choice and more space to browse, you're bound to find everything you need to **prepare, cook and serve fabulous food.**

We look forward to welcoming you to our new premises.

Visit us today! 64a High Street, Newport, Shropshire TF10 7BA

For everything you need to prepare, cook and serve fabulous food.



WWW.COOKSHOPNEWPORT.CO.UK

01952 825800



News in Brief

A selection of local news snippets. More news stories can be found online at allaboutnewport.co.uk.

New Channel 4 Health Show

Channel 4 are looking for people to take part in a brand new Health programme - presented by Davina McCall.

Do you or anyone you know suffer from chronic skin condition such as psoriasis, a severe allergy or a sleep problem that affects your everyday life?

Does the condition stop you living life to the full? Do you feel trapped in your body and need the right medical help to get it under control?

Do you have a positive attitude and burning ambition to achieve an impossible goal but your body is letting you down? If you want to truly get your condition under control and transform your life they have the UK's top health experts and specialists at hand - Visit www.7wonderapps.co.uk to download an application form, or email kerry@7wonder.co.uk or call 0203 701 7601 to speak with one of their friendly team.

Recycle don't Bin

Shrewsbury Music Therapy Trust are collecting and

recycling used printer ink jet cartridges, to raise funds for children with learning difficulties. Card 'n' Play (High Street, Newport) have a collection box towards the back of the shop, for your used cartridges. Your continued support really helps.

Aunt Sal's Cafe

Sally from the Gallery Cafe (Indoor Market), has now opened Aunt Sal's Cafe on Stafford Street, Newport (formerly Red Peppers).

Nock Deighton

Shropshire estate agent, Nock Deighton has opened a Newport office, located on the High Street opposite the Nat West bank. Office manager Caroline Anderson, said "There is a real buzz about the high street, with plenty of independent shops doing well and we are excited to be part of the community".

All Change

Helen from Forget-me-not Fabrics, is taking over the Gallery Cafe in Newport's Indoor Market.

Local Jobs

Full details www.allaboutnewport.co.uk/jobs

Full & Part-Time Carer Positions Nr. Newport

Telephone: 01952 222 555

Brocton Care are looking for Full Time - Community Carer, Part Time - Weekend Worker and Full Time - Care Worker.

Part Time - Tearoom assistant

Telephone: 07964 038546

Tearoom assistant required approx one weekend day per week plus weekday overtime during the summer season.

Post your local Job Vacancies online for FREE at www.allaboutnewport.co.uk/jobs

Have your say in the next issue of All About Magazine

If you wish to contribute to the next issue, please tweet, post or email your comments to:

editor@allaboutnewport.co.uk by 5pm, Monday 10th August 2015

or post your comments to All About Newport Ltd, c/o MSA Ferndale, Suite 7, Nova House, Audley Avenue Enterprise Park, Newport, Shropshire, TF10 7DW

Home (U)

DVD (RRP £10)

Ever sent someone the wrong email? The consequences can be horrendous. That's what happens to a comical alien called Oh, the star of Disney Pixar's animated adventure entitled Home.

Oh is a member of the Boov, an alien race that has taken over Earth. He accidentally sends an email to the Gorg, sworn enemies of the Boov, and upon realising his error, attempts to sort the matter.

Oh, voiced by Big Bang Theory actor Jim Parsons, makes friends with a little girl called Tip, played by singer Rihanna. Tip, who stayed on Earth as the Boov took over, is desperately searching for her mother, voiced by Jennifer Lopez.

It's a familiar theme of companionship and road to discovery, beautifully told by the folks at Pixar in faultless digital cartoon splendour.

Unlike some of the other big hits from this respected studio, Home is more aimed at children. It doesn't push the same emotional buttons as, let's say, Toy Story or Up.



Share this Review from
the Tablet Edition

Nevertheless, should the summer sun disappoint during the school holidays, it is a good way to keep the little ones entertained for an hour or two.



New, Refurbished & Repairs

• Computers • Laptops • Tablets • Phones • Apple Macs • Mac Books • iPads and iPhones



We Sell...

TVs • Stationery • Vapourlite E-Liquids • Parts & Accessories • Cables & Components

ACE Computer Systems offer on-Site Service & Support for Small Businesses and Home Users

ACE COMPUTER SYSTEMS (UK) LTD - 01952 820138

101 High Street, Newport, Shropshire TF10 7AY | Fax: 01952 825483 | Email: info@acecomputersystems.com

www.acecomputersystems.com





1



2

1 - Pure Evoke Mio by Orla Kiely - Designer portable Digital & FM Radio. Limited Edition, sold out at John Lewis £185.00
CoCo64, Newport: 01952 929120

2 - Heart Bracelet £9.95
Daisy Chain, Newport: 01952 813584

3 - Printed Canvas Painting Kit - Paint, Brush and Canvas all ready for holiday crafting. Ages from 5yrs upwards £4 each
Kitty Kraft, Newport: 01952 820940

4 - Outdoor Paella Pan - with fitting for standard gas cylinder - From £57.99
Cookshop Newport: 01952 825800



3



4



Click & Collect - Newport - www.allaboutnewport.co.uk/shops

Safe and Secure online shopping from these local independent retailers using Click & Collect.

Local accountant expands into Newport

12 years after setting up TaxAssist Accountants in Shrewsbury to provide specialist tax and accountancy services to the local business community, Nigel Lomax is expanding, opening a second office in Newport.

Nigel set up TaxAssist Accountants on Sundorne Avenue in Shrewsbury in 2003 and now his nine-strong team look after around 600 local businesses and taxpayers. In response to growing demand for specialist tax and accountancy in the area, Nigel decided the time was right to open a second office to offer Newport clients (old and new) a more convenient location to meet.

"We have a number of clients in and around Newport already and demand for our services continues to grow," said Nigel. "We've been thinking about opening a second office for a while, but now seems the perfect time. The new office on the High Street in Newport will give Newport-based clients a far more convenient place to visit us."

TaxAssist Accountants is looking to recruit a new team member to help support the new Newport office. TaxAssist Accountants in Shrewsbury and Newport is



a local business itself, providing tax and accountancy advice and services to around 600 owner-managed businesses. Nigel is part of the UK's largest network of accountants specialising in this field.

ACCOUNTANTS FOR YOUR BUSINESS

TaxAssist Accountants are experts in supporting owner-managed businesses. We can help with:

- Limited Company Accounts and Tax
- Sole Trader Accounts and Tax
- Partnership Accounts and Tax
- Bookkeeping and VAT
- Payroll and Pensions Admin
- CIS
- Company formations and start-up advice
- Cloud Accounting
- ... and much more.



01952 897077
www.taxassist.co.uk/newport-shropshire

Orchard talent makes master chef!

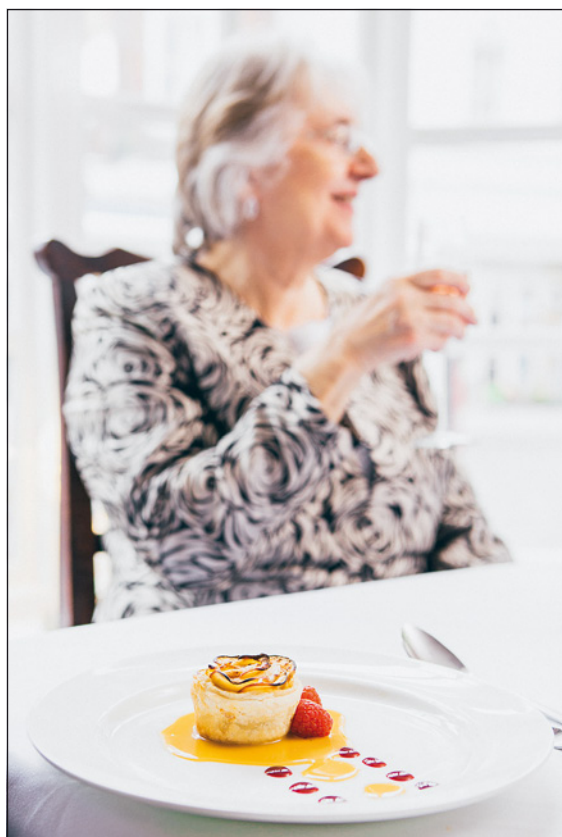
Staff at 'The Orchard' have been celebrating the recent success of chef de partie Charlotte Fenney who creates the wonderful desserts on the menu at the restaurant.

Charlotte who has worked with head chef Peter Roberts for eighteen months in the company's other business 'Call in The Caterers' represented the catering company in the Staffordshire Master-chef competition making it through to the final eight young chefs.

Charlotte had to suggest a three course menu and then cook it within a set time, just like the TV show in the kitchens at Stafford College. The team were delighted when she was awarded a tight second place for the hygiene award and came third overall in the county young chef of the year.

She was presented a platter, a certificate and a cash prize for her menu which contained elements from the Orchard's summer menu. Charlotte is the second talented chef that has made it to this advanced stage of the competition with Peter as her mentor.

To sample Charlotte's competition dishes, please ask staff at the restaurant next time you visit!



The Perfect Sunday Lunch

Traditional Sunday dinner or choose from the à la carte menu



Serving from 12.00 noon - 4.00pm

Families welcome

Fine Food, Fine Wine, Fine Service.

Online Bookings: www.orchard-dining.co.uk



THE ORCHARD



128 High Street, Newport TF10 7BH

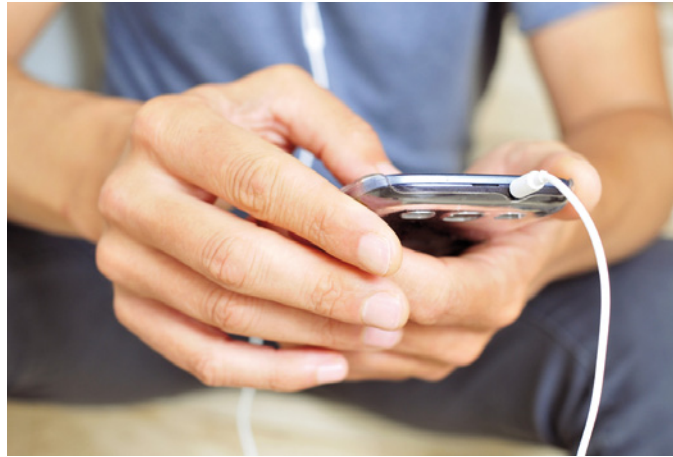
Call: 01952 872 700

Email: info@orchard-dining.co.uk

APPy Talking

Summer food. Delicious barbecues in the sunshine, fish and chips on the sea front and yummy ice cream. Let us see what apps can help.

What apps could you not live without?
Send your smartphone favourites
to **editor@allaboutnewport.co.uk**



CookBook: BBQ Recipes

Free for Android

This free app comes with inspirational ideas for the barbecue chef in your household. The 100 diverse recipes are sent to us by our chums in the USA. Because of this, some of the branded ingredients might be unrecognisable, but it can't be too difficult to substitute one soy sauce for another, or even to find an alternative to the type of blueberry yoghurt listed. Always so specific our American cousins. This has to be one of the unfussiest and easy to use apps we have reviewed. It is a simple list from 1 to 100, alphabetised rather than savoury to sweet.

Click on the recipe you want to know more about and see a picture of how it should turn out, nutritional guide, cooking and preparation times. Of course there is a list of ingredients and directions too. **Simple, yet effective.** Happy barbecuing everyone.



iFish4Chips

Free for Android, iPhone and iPad

Put together in conjunction with the National Federation of Fish Friers, this helpful little app is brilliant for guiding you to the best chippy in the area. It is great for when you are at home, but even better when holidaying in the UK. I have happened upon a couple of cracking chip shops on my travels over the years, with this app confirming what I already thought of them. But now, you don't have to take a chance, as the federation has listed the very best throughout the UK, letting you know exactly where to get your hands on the best quality cod, chips and more besides.

The app even gives guidance on specific requirements, such as gluten free options for those with an intolerance. This can be especially important for coeliacs and for those with severe reactions to certain ingredients. **Try this app and you'll be frying through the air with joy.**



Ice Cream

Free for Android

Trips to the seaside, theme park or even just into town, are always made better with an ice cream at this time of year. And we aren't talking just about a simple Mr Whippy. How about something more gorgeous? Fabulous flavours in crispy cones with tempting toppings. Ooh yummy. The game Ice Cream puts you behind the counter, serving hungry customers with an increasingly demanding array of flavours and toppings. It is ludicrously simple, yet oh so addictive. Start with training, learning how to construct the perfect treat.

From cone, to ice cream flavour and topping - you must get the orders right. Successfully feeding the queue adds more flavours and toppings, leading to more complex orders. Begin with vanilla and chocolate flavours and soon you will be dishing out mint choc chip too. **Great summer fun.**

Call goes out to local ramblers

by Joanie Koh, ramblers.org.uk



Photo courtesy Ian Dickin

Following on from our editorial in July, The Ramblers needs as many people as possible in Newport to take part in the **Big Pathwatch**, the nation's biggest ever footpath survey. This follows new research that reveals path problems in England, including the West Midlands, are on the rise.

With more than 21,400 problems recorded on paths in the West Midlands and more than 86,000 in England, the Ramblers fears this isn't the full picture and that the scale of the problem is far bigger.

The Ramblers chief executive Benedict Southworth said: "The Big Pathwatch is the first time we'll be asking everyone to help us walk every right of way in England and Wales and tell us what they find so we can protect and celebrate our amazing 140,000 mile path network, one of our nation's biggest assets.

"We know that there are currently problems on paths in the West Midlands that stop people in their tracks. We need to find the true extent of the problem and explore how this affects anyone who uses these paths, whether that's on their shortcut to the shops or while they're out enjoying our glorious countryside.

"With a 37 percent cut in the workforce looking after our paths in the West Midlands over the last five years, it's no surprise that these problems appear to be mounting."

To take part, download the free Big Pathwatch app, walk every right of way within a specific grid square and share any problems encountered, as well as

positive features such as beautiful views or interesting landscapes. Those who don't have a smartphone can still get involved by downloading materials from the Ramblers website.

Benedict added: "We're acutely aware that times are tough, which is why we want to find new, cost effective ways to ensure our paths, and the thousands of people who use them every day, don't suffer.

"That's why we've launched the Big Pathwatch. Together, we will walk every right of way in England and Wales to help build a national picture of the state of our path network– the first time this has ever been done. But more than that, we'll use the results to find the long term solutions to keep our paths clear, boosting our nation's health, happiness and the economy."

The Big Pathwatch will for the first time build a complete picture of the state of the path network. Where possible, Ramblers' path maintenance teams will head out to fix problems found through the survey, such as overgrown vegetation, broken path surfaces and bridges and gates in disrepair.

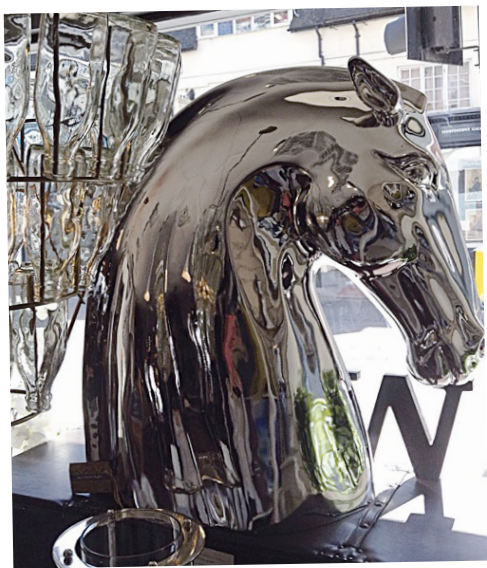
Importantly, the results will help the Ramblers develop long term strategies to keep paths in Newport clear for the future, boosting tourism, the economy and residents' physical and mental wellbeing.

To find out more, visit www.Ramblers.org.uk/bigpathwatch



CoCo.64

HOME



The Good Weather is Finally here!

There's no better time to get off the sofa and spruce up your home. Creating a beautiful environment for you and your family is one of life's pleasures. 'Coming Home' is an experience we value more and more in a world that is fast and noisy.

Our homes are our greatest asset, not just financially, but also for our sense of well being and relaxation.

So make your house a home, and surround yourself with beautiful things.

We are constantly changing our shop floor displays to help inspire you.

Love Kim & Chloe x

Quotes to Inspire Us

"Luxury must be comfortable, otherwise it is not luxury"
- Coco Chanel

"Minimalist rooms can be so beautiful, but I can't live in one; I love objects too much"
- Bunny Williams (Interior Designer)

"Decorating Golden Rule - Live with what you love" - Unknown

"Have nothing in your home that you don't know to be useful or believe to be beautiful" - William Morris



Parlane • Frankie Whistle • Coulson Macleod • KAT Aromatherapy • Coach House
• St Eval Candle Co. • Malini • Bronte Throws & Cushions • Scentchips

Saw it, loved it, bought it

64 High Street, Newport, Shropshire TF10 7BA 01952 929120





Smallwood Lodge Tea Room & Restaurant



The idea to take over Smallwood Lodge came from a dream one night. After working as a holistic therapist for 17 years it was a big change, but a change that I love and am thoroughly enjoying.

Smallwood Lodge is a quaint old tudor house on Newport's high street, with its mysterious history and abundance of character it creates a calming atmosphere that customers – young or old, regular or visiting while on holiday – can experience.

Our secluded garden offers a place of tranquillity that can help you to escape and feel as though you are anywhere you want to be.

All of this would not have been possible without my supportive staff who work closely together to give our customers the best standard of service, a service that contributes to Smallwood Lodge having been awarded a Certificate of Excellence by Trip Advisor.

I cannot contain my gratitude to my staff and every customer that has joined me in making my first year a success and turning my dream into reality. Here's to looking forward to many more years at Smallwood Lodge and thank you all very much.

*Jackie and all the staff at
Smallwood Lodge*

• Summer Opening Hours •

Monday - Saturday 9am - 5pm (hot food served till 4.30pm).
Closed Sunday



Lemon & raspberry layer cake

Impress your friends with this gorgeous tower of lemon and raspberries

Method

- 1 Preheat your oven to 175°C/ gas mark 4
 - 2 Line and grease the sandwich tins, then beat the butter, sugar and zest until pale and fluffy. Lightly beat the eggs and pour slowly into the butter whilst still beating. Then add the flour and beat until incorporated.
 - 3 Transfer the batter to the tins, try and make the mixture around the edge of the tins higher than the centre; this will make the cake more level.
 - 4 Bake for 20-25 minutes, or until a skewer comes out clean.
 - 5 Whilst the sponges are baking make the sugar syrup, bring the lemon juice & sugar to boil in a saucepan and leave to cool.
 - 6 When the sponges are cooked remove from the oven and brush with some of the lemon syrup and leave to cool. Then wrap in clingfilm and store overnight at room temperature.
 - 7 The next day make the buttercream, place the raspberry puree in a saucepan and reduce a little, chill until cool.
 - 8 Place the sugar and water in a small saucepan over a medium to high heat until the syrup reaches 121°C – be very careful not to burn yourself.
 - 9 Place the egg whites in a very clean bowl and whip them at a low speed until frothy.
 - 10 When the syrup has reached 121°C take off the heat and pour into the egg whites in a steady stream (keep the whisk running a low speed)
 - 11 Whip the meringue until cool to the touch, then add the butter a tablespoon at a time, beating after each addition. When the butter has been added, turn the speed up until it's a thick, smooth and spreadable mixture. At this point whisk in the raspberry puree and extract.
 - 12 Trim your cakes until flat and roughly the same height, brush each layer with some of the sugar syrup. Place the bottom layer on a cake turntable if you have one, however I used a chopping board.
 - 13 Put some of the buttercream on the bottom layer and using a palette knife spread evenly to the edge of the cake, place a few fresh raspberries on top of the filling. then repeat for the next layer.
 - 15 Put the next cake on top, making sure the flatter side of the cake is facing up and gently push down to release any air.
 - 16 To decorate the cake you need to apply two layers of buttercream. Place a generous amount of buttercream in the centre of the cake, work from the centre down the edges. Make sure there are no gaps then, using a side scraper, (or your palette knife) angle it at a 45° angle on the cake and rotate your board as you scrape to make the edge smooth. Keep doing this until you're happy and pop in the fridge for half an hour when you're finished.
 - 17 Then apply the second coat, using the same principle as before.
 - 18 Leave your cake to cool in the fridge for half an hour or until the buttercream has set and then decorate. I place a cake stencil on top of the cake and sieve icing sugar over it, carefully removing the stencil and piping small rosettes of buttercream around the edges. Pop a fresh raspberry on top of each piping.
- If you have any sugar syrup left over you can keep this in the fridge for a month and use on any other sponges you might make.



Ingredients

Sponge: • 200g salted butter • 200g caster sugar • Zest of 2 unwaxed lemons • 4 medium eggs • 200g sifted self-raising flour **Lemon syrup:** • 150ml lemon juice (roughly 3 lemons) • 150g caster sugar **Raspberry meringue butter cream:** • 270g caster sugar • 67ml water • 135g egg whites (roughly 3-4 large eggs) • 330g unsalted butter • 160g raspberries pureed • Raspberry extract (to taste) **Decoration:** • Icing sugar • Fresh raspberries

Silver Bracelet **£13.95**Statement Necklace set
£17.95 - Matching Bracelet available (left)

All that Glitters

It is so easy to change the look of an outfit you have had for ages by just adding new accessories!

At Daisy Chain, tucked down the cobbles of St Marys Street in Newport, accessories is our speciality!

So if you are looking for beautiful jewellery, stunning scarves or a stylish handbag to bring a new lease of life to an old outfit, pop in to see us and browse the huge range we have in store.

Emma and Maria x

Rose Gold Heart Necklace
£13.95Silver Jewel Necklace
£16.95Ring design Necklace
£19.95 and
Matching Bracelet **£14.95**Silver Heart Necklace
£16.95

Follow us on Facebook for our latest news & offers.



8 St Marys Street, Newport,
Shropshire TF10 7AB.

Telephone: 01952 813584

Handpicked

FROM THE HIGH STREET

1



1 - Jenifer Tunique (silk) with detailed zip and matching Silk Scarf £56.00

MooLace, Newport: 01952 872239

2 - Silver Circular Pendant £14.95

Daisy Chain, Newport: 01952 813584

3 - Turquoise Necklace and Matching Bracelet £12.95

Daisy Chain, Newport: 01952 813584

4 - Troop Unisex Canvas Bag in Black or Brown £42.99

(other styles available in stock)

The Courtyard, Newport: 01952 813384

2



3



4





Treat Yourself Tuesdays

Homemade food at it's local best,
with a mouth watering...

50% off

all prices
shown below

for over 60s between
12noon - 3pm



- Homemade soup served with half a sandwich, choose from: Cheese & Red Onion, Ham & Tomato or Chicken & Bacon **£5.50**
- Choice of Pork Sausage or a Cheese Omlette served with Chips & Beans **£3.95**
- Jacket Potato served with Salad and a choice of filling: Cheese & Beans, Tuna Sweetcorn Mayonaise or Beef Chilli **£3.95**
- Beer Battered Fish served with Chips and Mushy Peas **£7.95**
- Homemade Beef Chilli served with Rice **£8.00**
- Cheese & Red Onion Toasted Ciabatta served with Salad and Tortilla Chips **£3.95**
- Ham, Tomato & Cheese Toasted Ciabatta served with Salad and Tortilla Chips **£3.95**
- Tuna Sweetcorn Mayonaise Toasted Ciabatta served with Salad & Tortilla Chips **£3.95**

Breakfasts
Served
ALL DAY
from 10am

THE BARLEY

sixty two
high street

FOOD SERVED

Monday - Saturday 10am - 4pm
Sunday - Closed

(Bookings required for Parties). Open late nights
till 2am Friday & Saturday

T: 01952 820810

62 High Street, Newport. TF10 7AQ

• Live Music every last Friday of the month • Live Sport • Pool Table • FREE Wi-Fi

www.thebarleynewport.co.uk

1



2



3



4

1 - Faux Leather Trunk with Traditional Chrome style fittings, Wood Panelling, Carry Handles on both ends and lined interior - Large £84.00, Small £54.00

CoCo 64, Newport: 01952 929120

2 - Children Fun to do Kits - Kit comes with everything inside. Fun over the holidays. Ages from 5yrs upwards £6.99

Kitty Kraft, Newport: 01952 820940

3 - Dualit Nespresso compatible Coffee and Tea pods - Starting from £2.90

Cookshop Newport: 01952 825800

4 - Contemporary Log Holder, Kindie Holder and Match Holder in Black £64.00

Shropshire Heat, Newport: 01952 811443



Disney Infinity 3.0 Starter Pack

Available for Xbox One, Xbox 360, PlayStation 3, PlayStation 4 and Wii U
Price varies by platform, RRP £50-£60



Share this Review from
the Tablet Edition

The game makers at Disney are at it again, launching the third version of its popular Infinity range. Disney Infinity first hit the shelves in 2013 as a competitor to the popular Skylanders series of games. Infinity allows players to place colourful figurines of popular cartoon and movie characters onto a base that puts the character into the game to play on the screen.

It proved to be a reasonable hit and spawned a sequel based on the Marvel Comics franchise that Disney had acquired. Well, seeing as how Disney now owns Lucasfilm, Star Wars was always going to be suited to the same treatment. So, here we have it, Disney Infinity 3.0, launching as a starter pack with Star Wars characters and playable scenes from Lucas's vast universe. In the pack you will find the 3.0 game disc, 3.0 base on which to place figures, a Star Wars Twilight of the Republic play set piece and web codes.

The starter pack also comes with two figures, Anakin Skywalker and Ahsoka Tano, familiar to younger fans

of Star Wars, coming as they do from the popular animated Clone Wars TV series.

Further figures and play set pieces are available, with characters including Darth Vader, Han Solo and Chewbacca. There are also new Marvel and Disney/Pixar figures being released for the update.



Musical Theatre Summer Workshops

Children from ages 6-19 who love to sing, dance and act are invited to
join our fun Summer Workshops!!

Tues 4th August to Friday 7th 10.30-3.45 : Alice In Wonderland

Tuesday 11th August to Fri 14th : Your Choice Musical Theatre

Tuesday 18th August to Friday 21st : "Bring It On!" The Musical workshop

Tuesday 25th August to Friday 28th : Dance Style and Technique

Each week costs £45 with Sibling Discount and further reductions for multiple Weeks!

Contact Debbie to register 07576 511971





Newport Country Market - Home made cakes, pies, tarts, fruit loaf, honey, jams, chutneys, sponges, cards

Newport Markets

Newport has an indoor market hall, housed in a beautiful, Listed 1860 building and an outdoor Farmers' market. Both are packed with local produce and gifts. Below, are a select few independent traders, who make the indoor market hall, well worth a visit.

Cakes and Sweets - Cakes, biscuits, sweets, bread, crisps, nuts, snack lines, confectionary, all products at cut prices.

Cups & Wands - Tarot readings, tarot cards, tarot parties, holistic therapies and spiritual events.

Hey Jude - Music, guitars, vinyl records, CDs, music merchandise, musical accessories, tambourines, ukeleles, mandolins, set up and repairs to stringed instruments.

JJ's - Makeup, cosmetics, jewellery, hair accessories, nail varnish, talc, perfume & aftershave, nail art, toys, kids craft, pens & pencils, finger paints, chalk, temporary tattoos.

Lee Walker Family Butcher - Locally sourced carcass beef, all meats, free range pork, chickens, homemade beef burgers, local Shropshire lamb, homemade sausages.

Making a Difference - A charity stall selling Fair Trade

groceries, gifts and Christian cards. Run by volunteers. We sell goods from Traidcraft, Siwok and Just Cards.

Newport Country Market - Home made and produced products, cakes, pies, tarts, fruit loaf, honey, jams, chutneys, sponges, savouries, cards, knitted baby items, tea cosies.

Past and Present Jewellery - Jewellery, unusual vintage, retro, modern, designer, period rings, necklaces, earrings, bracelets, lapel pins broaches, new age jewellery.

SJ Smith - Fresh Grimsby Fish, Icelandic Shelf Cod, Fresh Haddock Norwegian, Shell Bed Plaice, Salmon Shrimp Fed, lemon Sole, Family owned boats.

Valdas Wool and Haberdashery - Stylecraft Wool, Tivoli, Patons, Wendy, Haberdashery, hand knitted garments made to order, all styles of buttons, knitted animals.



Newport Indoor Market opens **Friday 8.30am - 3.30pm** and **Saturday 8.30am - 3.30pm**, but please check individual traders' listings in our online Market Hall directory (visit web address below) as times may differ.

Discover more at <http://bit.ly/newportmarkets>

Cycle to work schemes

The Cycle to Work Scheme was introduced in 1999 as a government initiative to encourage cycling to work and promote a healthier lifestyle, while at the same time reducing traffic congestion and pollution.

Figures recently released by the **Cycle to Work Alliance** showed that in 2014 record numbers of employees participated in the scheme, heralding a long-term cycling boom in the UK.

Employers are increasingly recognising the importance of a healthier workforce and encouraging better lifestyle choices among their staff. **Cycling to work is clean, healthy and efficient** and there is documented evidence that cyclists are physically fitter, brighter and more productive than colleagues who arrive at work by more sedentary means.

In short, participating employers can buy bikes for employees as a tax free benefit. The employee must have a permanent position, pay tax under PAYE, be aged 18 or over and earn more than the national minimum wage once the repayments on the bike have been deducted from their gross salary.

The employer can spend up to £1000 on each employee, which can include the purchase of cycling safety clothing and accessories. The vast majority of employers can then reclaim the VAT on the purchase, before leasing the bike to the employee for a fixed term (normally 12 months). The monthly repayment on the lease is then taken from the employee's pre-tax salary, resulting in a reduction in income tax and national insurance contributions paid. It's also worth pointing out that the employer will typically save 13.8% of the total value of sacrifice, due to reductions in Employer's National Insurance Contributions.

At the end of the 'hire' period the employee has the option to purchase the bike from the employer with a final Fair Market Value payment, extend the period of the loan allowing heavier depreciation to Fair Market

Value, or simply give the bike back to the employer.

You can expect to save between 20% and 40% dependant on the scheme your employer uses and the original purchase price and the great news is you can have the use of a brand new bike and equipment right now without spending anything at all.

The bike doesn't have to be used solely for commuting to work. Officially the deal is that you should use the bike at least 50% of the time for work related journeys, but we are yet to hear of any employer who is upset that his staff are keeping fit in their own time.

The ceiling on the purchase is £1000 including VAT. The purchase can include accessories but they must be such that they are safety orientated and would be used on a commute to work.

The first thing you need to do is to speak to your company's Human Resources Department. You will be told which scheme your company is dealing with and you can then apply for a voucher to cover the cost of the purchase. You must then purchase the bike and equipment from one of the scheme's partner shops. All of the schemes charge a commission. That's how they make their money, so it will not be possible to avail of other discounts on retail price.

There are many agencies that carry out the administration on behalf of participating employers and presently we are a partner shop of **Bike2Work, Cyclescheme, Bike To Work, Salary Exchange and Bikes for Staff** and can even accept **Halfords vouchers**. We are constantly looking to expand our coverage. If your employer is with another provider please let us know.

If your employer is not signed up with a cycle scheme provider then **it's time you encouraged them to do so.**



NOVA CYCLES

www.novacycles.co.uk

01952 825952

Ask us about our **Workplace Demonstrations** - Arranged at your employer's convenience.

2 The Square, Newport, Shropshire TF10 7AG

Excellence in care

We are delighted to be recognised for providing excellent quality care to our clients. Providing a valuable service in the local area for clients and families, supporting the local community and contributing to the rural area economy in creating jobs for local people. We are immensely proud of our achievements and the quality we provide".

We have a close relationship with clients and families where lines of communication are open and transparent, as well as an open door policy to ensure that should concerns be raised they can be resolved quickly.

We train and support our staff with a comprehensive training and induction program incorporating the new Care Certificate from the Care Act. As the sector is changing in terms of improvements through the Care Quality Commission we are well placed to quickly move in line with requirements needed.

"We work with three local authorities and we are thrilled to be recognised for providing great care, by other professionals: district nurses, doctors, social workers and other health professionals, just three years since Brockton Care was established." Brockton Care is recruiting at present. 01952 222 555.

**THE PERFECT
COSTA COFFEE
IS ONLY MOMENTS AWAY.**

32 High St
Newport



01952
825202

WE MAKE IT BETTER

COSTA

DISTRIBUTORS WANTED

We are looking for hardworking, reliable and honest people to deliver **All About Magazine** to our readers.

If you are looking for a **few hours work** each month with **good rates of pay**, please call...

Karen on 07973 385 929

50s inspired stove offers style & quality

available from Newport based ShropshireHeat.co.uk

By now everyone will be enjoying the beautiful summer weather (hopefully). However in the land of heating and stoves, manufacturers are launching their new products before the heating season "fires up"...so to speak.

Shropshire Heat has long been an advocate of Dove stoves, due to the quality of their product range and the aesthetics give immediate appeal whether your interior style is traditional or contemporary.

New to the Dove range of stoves is the distinctive 225.

Featuring a square firebox, subtle curving details



and compact dimensions, the Dove 225 is a versatile yet powerful stove that offers style and quality in equal measure.

With a 1950s inspired design, the 225 has a fresh look that is at home in any setting, incorporating the latest Cleanburn and Airwash technology.

The 225 really does combine the best of the past with the technological advancements of the present.

If this has inspired you to have a stove, call into the shop and have a look at the range of models we have in store. Tues-Sat 10am – 5pm. Free parking available at the Kings Head.

COMMERCIAL FEATURE



01952 811443



Neutering Your Pets

Tern Vets, explain the benefits neutering can offer your dog or cat.

Bitch Spey

The season lasts for 3 weeks, and we recommend speying 3-4 months after the start of a season, or at 6 months of age before they have had a season.

It is preferable not to spey her if she has a false pregnancy i.e. glands full of milk and possibly behavioural changes.

Benefits of speying your bitch includes:

- No false pregnancy – common condition that can occur after a season, causes nesting behaviour and milk to form in the mammary glands
- No oestrus (season or “heat”) – occurs every 6 months in entire bitches, during this time bitches should be kept away from dogs and walked under supervision to prevent accidental mating occurring
- Pyometra and other uterine diseases are avoided – pyometra is a nasty infection which causes the womb to become pus filled, and if left untreated can be fatal
- Reduces risk of Mammary tumours as the risk of these developing increases with every season

Cat Spey

We recommend getting your cat speyed between 4-6 months. Cats are sexually mature from a young age. Speying your cat will prevent unwanted litters and can



also prevent roaming behaviour.

Dog Castration

For the male dogs, the exact age that neutering is recommend varies slightly depending on the breed of dog; most dogs can be castrated from 6-7 months of age. Larger breeds of dogs generally get castrated at a slightly later age than smaller breeds.

Cat Castration

We recommend getting your male cat neutered between 4-6 months, since after this age they will become sexually mature and capable of reproducing. However they may still be neutered safely when they are older than this.

Tern Veterinary Group 01952 820222

- **Full operating facilities** • **Regular Clinics**
- **24hr Veterinary cover locally**

Consulting Times

Mon - Fri 9am - 10.15am, 4.30pm - 6pm (by appointment)
Saturday 11am - 12pm (by appointment)

Reception Opening Times

Monday - Friday 9am - 6pm, Saturday 9am - 12pm



Audley Avenue, Newport TF10 7BX (Off A518 Telford Road)
www.ternvets.co.uk

Church Eaton Primary celebrates

The 17th of June saw a double celebration at Church Eaton Primary School.



The village school which has 56 pupils on roll was judged as 'good' by Ofsted at the end of May, and was one of the first schools in Staffordshire to be inspected under the new tougher Ofsted Framework. Also being celebrated, was the 97% whole school attendance figure which was recognized by the LEA in a recent annual Attendance Audit.

Headteacher Simon Shaw said " We have a fantastic school in a wonderful setting. We work hard to take full advantage of the unique learning environments

that we have here, such as our allotment area, and large natural dipping pond which enable us to stretch the boundaries of traditional learning, while achieving better than average progress and attainment for our pupils in the classroom setting. Our pupils are happy and enthusiastic to learn".

If you would like to enquire about places at Church Eaton Primary School, or would like to arrange a taster session for your child, please contact Mr Shaw on 01785 823089.

The Red Lion COUNTRY INN & DINNING

NEW FRESH FISH
MENU FRESH MEAT
SOURCED FROM LOCAL SUPPLIERS

10% OFF YOUR FOOD BILL WITH THIS ADVERT

CASK ALES, WINES & SPIRITS

BUN LANE, GREAT CHATWELL, TF10 9BJ

TEL - 01952 691643





Putting on a great show

Is it just us or does Newport Show get better every year?

The weather certainly helped but it's fantastic to be part of such a great event which showcases the best of what Newport and the surrounding area has to offer.

The Autotech Performance stand was our busiest ever - maybe in part to the fact we had an Aston Martin Volante, a racing BMW 3-series and a convertible Triumph TR6 alongside us!

Getting our name out into the wider domain is vital for any business and we were delighted that so many customers decided to come along to help us spread the word. We think there's no better advert than a personal recommendation so to have so many supporters on the stand was a really proud moment for us.

A lot of people see the word 'performance' and think that their humble car would need to go somewhere else for a service or MOT, but we've proved over the years that we take incredible care of all makes and marques.

Yes, we do have a lot of luxury vehicles come to our purpose-built service centre in Hortonwood - from Aston Martin and Bentley to Ferrari and Porsche - but we take care of every vehicle in exactly the same way

regardless of whether it's worth £1 million or £1,000.

Owner Peter Thorpe has extensive experience with prestige vehicles and travels all over Europe looking after cars of wealthy owners.

Along with his support team, Autotech Performance has more than 50 years' experience in servicing and maintaining vehicles, from classics and supercars to everyday runarounds.

As well as servicing and MOTs we also do tuning, repairs, air conditioning and diagnostics. And ask for a quote on our tyres because we believe we can do them better than anyone else.

So give us a call for all your motoring needs and we'd love to help. For more information ring **01952 228822** or visit www.autotechperformance.co.uk





Call us today on 01952 22 88 22 to book your car for a performance upgrade or regular service. Courtesy cars available.



Our BMW Autologic Diagnostics technology, along with our expertise, allows us to confidently undertake any service and repair work required and to specialise without having to involve the dealer.



Whatever you drive, BMW to Aston Martin, here at Autotech Performance in Telford, we have the expertise required to carry out a complete service of your car to first class standard.

Autotech Performance
Unit H, Horton Enterprise Park,
Hortonwood 50, Telford, Shropshire. TF1 7GZ
01952 228822
e: mail@autotechperformance.co.uk

AUTOTECH
PERFORMANCE

Opening Times: Monday - Friday: 8:30am - 6:00pm Saturday: By Appointment Only Sunday: Closed

www.autotechperformance.co.uk





The Engineering Education Scheme (EES) offers the opportunity to work with leading engineering companies (above). Pictured right (top-bottom) Friends of the Earth, Rotary Club Youth Speaks team and Mrs. Ros Garner, headteacher of Newport Girls' High School with Lexy Sperling.

Newport Girls' High School has its heart in the community

Newport Girls' High School is well known locally and nationally for the academic success of the students, usually featuring in the League Tables amongst the top performing state schools in the country.

Within the local community the School also makes a significant contribution but in ways that are not always so prominent.

For example, it is the NGHS Environment Committee that works on the community garden at the end of Wellington Road. The fundraising efforts of this group also enabled them to make a donation of £200 to Shrewsbury Friends of the Earth in addition to the work they are doing to develop the variety of plants that attract insects around the School site.

Through House activities the girls raise a significant amount of money for other charities and this year have supported a total of 15 different causes. Donations have gone to Severn Hospice and a whole range of national and international causes including Medecins Sans Frontieres, the Alzheimers Society and SANE, a mental health charity. Individual girls also pick charities they have a connection with. A

Year 8 pupil, Lexy Sperling, motivated by the plight of a little girl with leukaemia, has been recognised for her fantastic fundraising efforts with a Newport Town Council Award and Telford and Wrekin's Young Citizen of the Year trophy.

Sixth Form students helped with the administration of the Prostate Cancer testing evening at Cosy Hall and they often volunteer to work in local charity shops as part of their Duke of Edinburgh Award. They find time to mentor younger students at the High School and also in other local schools across a full range of subjects. Sixth Form students who have undertaken the Level 3 Sports Leadership Award are currently leading sessions in rounders and games in primary schools across Telford and Wrekin.

Having the opportunity to work on a real life project with leading engineering companies like GKN or Schneider Electric presents itself each year through

the Engineering Education Scheme (EES). The team members benefit greatly from working with experienced engineers and having the chance to apply the theoretical knowledge of their A Level subjects to a practical problem. The success of the EES comes through the ability of the Sixth Form students to bring fresh ideas, work as a team and problem solve. A team from NGHS also entered the Rotary Club Youth Speaks Competition, testing out their public speaking abilities. It is only with the efforts of organisations like the Rotary Club and EES that young people have these additional opportunities and chance to rise to the challenge!

A broad range of sporting fixtures gives girls from all years further opportunities to meet students from other schools and friendships are often forged through club participation outside school. There are many girls who play for local clubs and participate in leagues and tournaments at netball, cricket, football, athletics and fencing, to name but a few. A number of girls also play or sing in local choirs, orchestras and bands in addition to the musical groups within school. Other girls learn valuable skills through joining the cadet forces. The forging of friendships can only be a positive experience and helps to develop confidence, understanding and empathy. We are grateful to the dedicated volunteers who run all of these activities and hope that, over time, girls from NGHS will take on leadership roles themselves.

A poignant community occasion this year was the Remembrance Service at St Nicholas's Church when girls were invited to give their personal experiences of going on a trip to the First World War battlefields of northern France and Belgium. They had carried out research on family members who had fought and died in the fighting and were clearly very moved by their experience of visiting the graveyards, as were the congregation on hearing the stories of bravery and sacrifice. It is beneficial for young people to understand their personal history and their place in society today and it is through many of these community activities that understanding and awareness develop.

We are very thankful to all the local businesses and organisations who provide work experience placements for our students and the local traders who support many of our Parent Teacher Association



events. We recognise that by working within the local community we have an enriching experience in school and we hope that what we give back will keep the School at the heart of Newport and the surrounding area.

Newport Girls' High School - 01952 797550

Wellington Road, Newport TF10 7HL . Website: <http://www.nghs.org.uk>

Email: schooloffice@nghs.org.uk

Hey Jude's sessions inspire local talent

by Nichola Leeper & Matthew Thomas - facebook.com/SessionsAtJudes

March the 7th 2015 saw the first of what would become the Hey Jude's Sessions. Olly Flavell from Newport performed a selection of original songs in the cosy bustling music shop known as Hey Jude's, situated in Newport's local market, in order to promote his recently released album 'Lo-Fi'.

With a backdrop of vintage vinyls, CDs and music memorabilia; the vintage aesthetic of this local business inspired the very idea to invite musicians to visit Hey Jude's and perform 2-3 songs, which are professionally produced by local photographer and videographer Matthew Thomas and feature on YouTube and Hey Jude's Sessions Facebook page.

The main purpose of these sessions is to promote the awe-inspiring talent in and around Newport. We have had phenomenal and captivating performances from musicians such as: Rich Evans who played an impressive set featuring his own hand-crafted instruments, a warm soulful performance from singer songwriter Alexandra Jayne who has recently supported James Blunt's Moon Landing tour. Not to



Alex Jayne performing with Phil James & Sarah Chatterley

forget Martin Dale, who took a flying visit all the way from Denmark, delivering a comical and entertaining session, including an impromptu harmonica solo from a passer-by on The Raggle Taggle Gypsy. To name but a few!

Sessions are relaxed. Jude Paton the owner of Hey Jude's welcomes musicians to perform within her shop, or upon the market's balcony for larger groups (3 or more musicians). Performers are invited to play an instrument 'off the wall' for their session, or in the case of local drummer Paul Crewe an egg maracas.

COME JOIN US TODAY AT THE NEW INNS, BREWOOD THE TRADITIONAL BRITISH PUB

**KIDDEMORE GREEN, BREWOOD
STAFFORDSHIRE, ST19 9BH**

**10%
OFF**

**YOUR FIRST FOOD BILL
WITH THIS ADVERT**

TEL - 01902 850614

**HOMECOOKED
FOOD
SERVED DAILY**

**LARGE SELECTION
OF SPIRITS, WINES
AND CASK ALES**

tastecard

G Gourmet Society
RESTAURANT SAVINGS
MADE SIMPLE

tripadvisor

f

BLACK SLATE
PUBCO UK Ltd

Now That's What I Call Music 91

RRP £13.00

It's summer and hopefully that means barbecues galore, with burgers blackening on forgotten coals as we relax with another ice cold beer.

Ah yes, there is always another burger to throw on the 'barbie'. So, you've got the food and the drink sorted, but to make it a real party you are going to need some top tunes blaring out. Enter the good folk from 'Now That's What I Call Music'.

Incredibly, the listening public is now enjoying the 91st in the regular series of compilation albums, thought of by many as the soundtrack to our lives. From the early 1980s 'Now' has catalogued the popular music charts, and 91 is no different. Among the 44 tracks, hits from Ellie Goulding and Little Mix sit alongside tracks from Years and Years, Rita Ora, Nick Jonas and Avici, to name a few. Not every track will be to everyone's taste, but at least you won't have to get out of your garden chair every five minutes to put on fresh music.

And even if you absolutely hate one tune, you are only three or four minutes from one you will be able to tap your feet along to.



Share this Review from the Tablet Edition

So place your faith in the compilers from 'Now' and let '91' be the soundtrack to your summer party. Cheers everyone.



COMPLETE HOME REMOVALS

The only removals company in Telford to be members of 'The Guild of Master Craftsmen' and 'Moved Assured'

We are a small *family run business* and we deliver a professional removal to the highest standards. We ensure our customers are 100% happy with the work we do, and offer excellent value for money.

Our Services include...

- Nationwide Service
- Professional Home Packing Service
- Fully Trained, Uniformed Staff
- Storage
- Piano Moves
- Packing Materials
- Commercial Moves
- Porter Hire
- Removals Service 7 Days a Week

Call us today to get your Free Quote

JAYS REMOVALS & STORAGE LTD

YOUR HOME, SAFE IN OUR HANDS

Unit 26, Horton Court, Hortonwood 50, Telford TF1 7GY



Find us on Facebook or visit us at:

www.JaysRemovalsandStorage.com

Telford: 01952 289118 | Wolverhampton: 01902 504300 | Shrewsbury: 01743 818706



Estate Agents - Surveyors - Valuers

The Estate Agents experienced in selling residential properties in the Newport area for almost 50 years

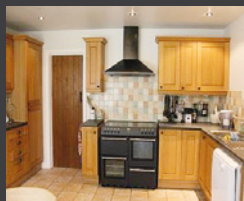
Brandon House, Woodcote £475,000 region

This is an intriguing, characterful, four bedroomed Grade II Listed property, dating from the 17th Century, having been lovingly maintained by its present owners, retaining many of its original features, with sympathetic upgrading of facilities to include a fitted breakfast kitchen with AGA, two ensuite bathrooms and a modern oil-fired central heating system.



18 Weald Moors Park, Preston £430,000 region

The four bedroomed home forms part of an individual development of luxury homes, with eleven of the houses and apartments created from the former Preston Trust Homes Grade 1 Listed Almshouse. Number 18, set in approximately ¼ acre, is only one of five houses constructed beyond the original walled and former kitchen gardens and paddock.



Tempertons
01952 812519

23-25 High Street,
Newport TF10 7AT

newport@tempertons.co.uk | www.tempertons.co.uk

Call us today for a
free pre-sale no
obligation valuation



A further Tempertons office is also situated at Hazledine House TF3 4JL - 01952 201700 - telford@tempertons.co.uk

Give your home the new look it deserves

Summer is here at last and for many folk it's the time for creating a new look or even moving house and having a complete change of style.

Whether you're going up the property ladder or downsizing, **PJ Blinds** have a window solution to turn your dreams into reality.

If you need help with design or matching the latest colour trends to your various needs, a trip to our website pjblindstelford.co.uk has a host of ideas on traditional as well as the latest colour pallet, with ideas you may not have considered to fire your imagination.

We're offering an *Extra Special Offer* for customers looking for a complete makeover or moving house. Call for more details.

Whatever your requirements, contact us now for your **Free Consultation** on 01952 541657.

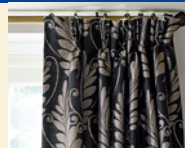
YOUR LOCAL BLIND SPECIALIST **PJ BLINDS**

A Local Family Company with 15 years experience



HOT SUMMER OFFERS
BUY 2 GET 1 FREE*
On all Vertical, Venetian & Roller Blinds

See Our Stunning Range of
**Brand New Curtain and
Soft Furnishing Fabrics
For Summer 2015**



CALL US ON: 01952 541657

for a friendly **FREE** no obligation quote

Visit: www.pjblindstelford.co.uk

All quoted prices include measuring, fitting and VAT. *T&Cs apply

COMMERCIAL FEATURE

Why compromise on your new kitchen?

With a huge array of styles to suit all tastes and budgets that range from £5000 to £25,000, we design and install bespoke kitchens, made-to-measure and designed with you in mind.

If you are looking for a kitchen that is as individual as you are, will stand the test of time and that offers excellent value for money, it might be a good idea to Indulge.

Call to find out more:

01952 354615

www.indulgeinteriors.co.uk



INDULGE
interiors

**KITCHEN
BEDROOM
BATHROOM
HOME OFFICE**

Fifty shades of Green

Tony and Kate Bennett have been opening The Wickets at Wheaton Aston for the National Gardens Scheme for several years.

Their next opening is on Sunday 30th August. They have raised over £5000 for its charities which principally are Macmillan Cancer Support, Marie Curie Cancer Care, Hospice UK, Carers Trust & Queen's Nursing Institute.

Situated opposite The Hartley Arms near the Shropshire Union Canal and formerly the village police house & station, the site covers a third of an acre. The front garden is quite traditional with rose and herbaceous beds which reward close inspection.

Pass down the side of the house though, and you will have an OMG moment as the vista opens to the pond and railway station platform and then walk around to find its hidden secrets. This quirky garden is full of original ideas that inspires other gardeners.

It is a garden with a sense of humour and is made up of a host of themed areas, for example, 'Fifty Shades of Green' its fernery, The Gothic Gardyne complete with regal thrones, a Japanese dry stream garden, its own cricket match and you are welcome to play clock



golf on the lawn. Open from 1:30 to 5pm on **Sunday 30th August** at 47 Long Street, Wheaton Aston, ST19 9NF. Entrance is just £3 per adult, Children free; teas available.

Can you Spot the 6 Differences?

No prizes, just for fun. Answers on Page 58.



Dinghy Dawdle on the Newport Canal

by John Myers of the Shrewsbury & Newport Canals Trust

On Saturday 27 June a small band of Shrewsbury & Newport Canals Trust enthusiasts gathered at the Black Shed in Newport, for the second year running, to boat along the Newport Canal. The canal is divided into sections by the filled in locks and other obstructions, so the idea was to manhandle the canoes from section to section. At the same time they planned to extend an organized litter pick on the bank and clean up the canal by collecting rubbish and litter and removing anything that should not be there.

The parts of the Newport Canal that are in water are a Site of Special Scientific Interest, so permission for the trip had to be obtained from Natural England (NE). NE agreed but limited their approval to just five boats so as not to disturb the environment.

The five canoes set off eastwards towards the A41 and, almost immediately, discovered a large doll floating in the canal. It was immediately given a home in the floating "litter lighter" being used to carry debris and it was towed behind one of the boats for the duration. The equivalent of about 8 bin bags of rubbish were



Photograph courtesy: Richard Knisely-Marpole

collected, mainly bottles and cans and packets. The biggest items were some upholstered chairs which had to be dragged out with great difficulty.

After returning to the Black Shed some of the boats set off westwards, offering a chance to admire the magnificent lilies growing at that end.

A small group of SNCT volunteers helped the crews transport the boats from section to section and a good time was had by all.

Summer sports means sprain and strains...

By Anna Simons MCSP - Chartered Physiotherapist

The recent spell of warm sunny weather has brought us all out of hiding and onto the sports fields and lawns of Newport for a spot of fun and games. Sadly this has meant an increased number of Sprains Strains and swollen bruised joints, as are muscles; ligaments and tendons are put through more than their usual.

So just to put you in the picture;

A sprain occurs in a ligament and can be mild, (grade 1, only a few fibres torn and no instability) or much more serious (a full rupture, grade 3) resulting in severe pain, swelling, bruising, gross instability and total lack of function.

A strain occurs in a muscle and is also graded from



grade 1, a few torn fibres, minimal loss of strength and pain up to a grade 3; a complete tear resulting in significant muscle weakness, severe loss of function but minimal to no pain of contraction.

I've seen the complete range in the practice this week. From ruptured Achilles tendons now in recovery needing stretching and proprioceptive re-education to twisted knee ligaments needing rest, ice in compression and elevation, (R.I.C.E) and ultrasound treatment.

Whether your injury is acute and done recently or chronic (years old) it's always worth getting advice and treatment to help you recover.

COMMERCIAL FEATURE

Contact Anna for friendly professional advice about your injury on
01952 811525 or Mobile 07887 930642

Safe teeth whitening

By Dr Ashok Jakhu



Have you always wanted a beautiful white smile or have your teeth darkened over time? Whatever your reason for wanting whiter teeth, you are not alone. It is estimated that more than 100,000 people in Britain had their teeth whitened last year. At Wycherley's Dental Practice we will firstly carry out a detailed consultation and we will always make sure your whitening is carried out in a safe, professional environment by appropriately trained staff.

Teeth whitening is safe

Teeth whitening is one of the safest and conservative forms of cosmetic dental treatments allowing the natural colour of your teeth to be lightened without removing any tooth surface.

If carried out by a trained dental professional teeth whitening is perfectly safe. After a full examination and assessment of your oral health I will discuss with you the options available, decide if tooth whitening is appropriate for you and develop an overall treatment plan that gives the desired result. Whitening your teeth will not damage the enamel or harm your gums if done correctly.

You will get to see on a chart what shade your teeth are before the treatment and what shade you are likely to achieve. At the end of the treatment I will show you the actual result so you can see how effective it was along with digital before and after images.

How teeth whitening works

Whitening won't remove the surface of your teeth or change their shape. It's often a better option than alternatives, such as veneers, because it doesn't involve permanently altering the tooth's structure and is easy to look after. Some teeth are yellower or darker than

others even when they are quite healthy and teeth tend to get darker as people get older.

To whiten the teeth a whitening gel (Hydrogen Peroxide or carbamide peroxide) is applied to your teeth using specially-made trays that fit in your mouth these trays are worn at night.

You may experience some sensitivity for a short time during your treatment but this is normal and will soon fade away after you stop whitening your teeth.

We use Enlighten teeth whitening system, it is the only system to guarantee that the teeth will get to a VITA shade B1 which is the whitest shade on a regular dentist shade guide. We also offer a basic Pola home teeth whitening service.

Teeth Whitening will only lighten natural tooth substance. It will not work on any types of false teeth such as fillings, dentures, crowns and veneers. If your dentures are stained or discoloured visit your dentist and ask for them to be cleaned. Stained veneers, crown, fillings, bridges or dentures may need replacing; again ask at your consultation.

Enlighten Combination Enlighten Teeth Whitening



You are given Enlighten teeth whitening syringes to whiten your teeth at home for two weeks. After this a high concentration teeth whitening gel is carefully applied for 2 sessions of 20 minutes in surgery on the fifteenth day of whitening. The hydrogen peroxide in the gel penetrates the enamel and removes underlying stains and discolouration. The results should last many months, depending on your lifestyle.



The advantage with combination bleaching is that it is done in a controlled and gradual way. These syringes can be purchased at your examination.

Pola Teeth Whitening



The essence of this technique is that you bleach your teeth at home. We

will take impressions of your teeth and from these impressions make customised trays you will be shown how to apply the tooth whitening gel to the trays. We recommend that the gel and the tray should be worn over night. It should take approximately one week for the results to show (if your teeth are heavily stained you may need to have the combination teeth whitening system). When you have achieved the whiteness that you desire you will then have to maintain that beautiful bright smile.

Only trained Dental Professionals can whiten teeth

The law says that tooth whitening is a 'dental procedure' that should only be offered and carried out by **qualified Dental Professionals**. In the UK and some other countries teeth whitening can only legally be carried out by a dentist, dental hygienist or dental therapist. The European Directive on this has been confirmed by the High Court. This means that anybody carrying out tooth whitening other than a qualified Dental Professional is doing it illegally. Some beauty salons offer teeth whitening, but this is illegal if there is no Dental Professional present. Anyone other than a dentist, dental hygienist or dental therapist who is offering teeth whitening (e.g. beauticians, hairdressers, and salon staff) will not have the right training and knowledge, could permanently damage your teeth and gums and they cannot help you when something goes wrong.

If you would like more advice, you could contact either the General Dental Council (GDC), the British Dental Association (BDA) or call **Wycherley's dental practice** on **01952 459459**.

Dental and Cosmetic Treatments



- Comprehensive 1 hour new patient examination using digital radiographs
- Emergency, late night and weekend appointments
- IV sedation available for anxious and dental phobic patients
- No long waiting lists, we aim to see you in 24 hours
- A range of payment plans for all the family, and interest-free finance
- Teeth whitening and Cosmetic braces
- Trained in cosmetic dentistry and facial aesthetics
- Dental Implants



- Cutting edge equipment and facilities to aid diagnosis



WYCHERLEY'S
DENTAL PRACTICE

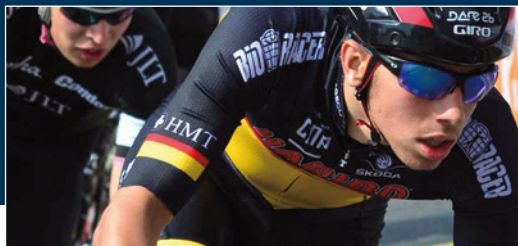
Principle Dentist Dr Ashok Jakhu

Wycherley's Dental Practice, 49 High Street,
Newport TF10 7AT | Tel: 01952 459459

info@wycherleysdentalpractice.co.uk
www.wycherleysdentalpractice.co.uk



Now Stockists of... Global British Sports Eyewear Brand "Sunwise"



sunwise RX®

Please feel free to call in and browse the range. Available in Plano, Single Vision or Varifocal as well as offering 100% UVA & UVB protection.

Interchangeable models come with 4 different lens options; 3 tinted and 1 clear to cover different lighting conditions.

duignan phelps
optometrists



Call 01952 812820

10 St Marys Street, Newport, TF10 7AB
(Practice Car Park and Disabled Lift access located at the side of our building)

Monday-Friday 9am-5pm, Saturday 9am-12.30
Sunday Closed

www.newporteyecare.co.uk



Age is not a barrier

One joy of putting together each edition of All About Magazine is the interesting folk we get to feature. For instance, Hilary Stevenson.

Hilary is an accomplished triathlete with five gold medals in her category at the European Championships. She did rather well in last September's World Championships too, competing in Edmonton, Canada.

"I came third, earning a bronze medal, beaten only by two Americans," says Hilary. "Those damn Yanks," she jokes.

Hilary's achievements in athletics are even more impressive because she is a leading light for the sport, aged 71. "I have earned an automatic place in Lisbon for next year's Europeans and hope to make it six victories in a row," Hilary adds. She is, however, more than aware of the competition at that level.

"Some ladies have come up to my age group, so it could be a bit more difficult this time."

The triathlon which encompasses a 1.5km swim, 40k bike ride and 10km run is no mean feat.

The spritely grandmother previously ran marathons but took her first steps in triathlon after a suggestion from her dentist, John Coombes, a keen participant himself.

She entered the 2002 London Triathlon, winning her age group, and the rest, as they say, is history.

A niggling hip injury has seen Mrs Stevenson withdraw from this year's Worlds in Chicago, but she has no plans to throw in the towel just yet.

"I want to get better from the injury for next year and hopefully bring home more gold," she adds.

Good luck Hilary from All About Magazine. Newport salutes you.



Traditional Home Cooked Pub Food

PLUS DAILY SPECIALS SUCH AS...

- Homemade Braised Steak £9.95
- Homemade Lamb Tagine £10.95
- The Ever Popular Faggots & Mash £7.95
- Homemade Beef, Vegetable & Ale Pie £9.95

FABULOUS SELECTION OF HOMEMADE DESSERTS SUCH AS...

- Rhubarb Crumble • Bread & Butter Pudding
- Treacle Sponge • Traditional Oven-baked Rice Pudding • Jam Tartlet - at just £4.50 each

BOOK NOW

01952 551133

Call in and Pick-up your
Lunchtime Loyalty Card

(T&Cs apply)

2 for £10

**Served Tuesday - Friday
12noon - 2pm**

(Selected menu, Single meals £5.95)

**Traditional
Sunday Lunch**

**3 Courses £11.95 • 2 Courses £9.95
1 Course £7.95**

We're told it's "one of the best Sunday lunches around", so come and find out for yourself.

Served from 12 noon

Sambrook, Newport TF10 8AP

Monday* 5pm-11pm; Tues-Thurs 12noon-2pm, 5pm-11pm;
Fri, Sat & Sun 12noon-11pm *Pub open Monday's but not serving food.



DO YOU KNOW A RELATIVE OR FRIEND who may need a **Meals-on-Wheels** service?

Call **ICare Community Meals 0845 604 1125**
to try a complimentary meal and sweet!



INVESTORS
IN PEOPLE

Bronze



Member of
NACC
National Association of Catering



ICare Community Meals

We are reaching out and contacting members of our community that may require our services.

Healthy eating is essential for everyone.

ICare provide nutritious, satisfying meals and tasty desserts. We can also offer meals for special dietary needs, including cultural and religious requirements.

ICare offers a range of services:

- a lunch time hot meal delivery service
- a weekly frozen delivery service
- an ICare Plus service which includes a 15 minute stay where a Well-being and Safety check will be carried out if needed
- a home shopping service

Our Community Assistants are helpful polite and punctual and undergo a rigorous selection process, whereby they are trained and assessed in adult care awareness, police checked and DBS cleared before they can deliver to you.

We are happy to provide a complimentary meal and sweet to an individual or a group who would like to try what we have on offer.

FOR MORE INFORMATION PLEASE CALL 0845 604 1125

www.icarecuisine.co.uk | www.icaregroup.co.uk



Shropshire
Wildlife Trust



The Pipistrelle (above), and Serotine (inset) one of the largest UK's largest bats

Bats

by Sarah Gibson - www.shropshirewildlifetrust.org.uk

People have always lived with bats, in past centuries much more closely than we do now. Before glass was used in windows we would have shared our houses intimately with these creatures.

Seventy years ago my mother encountered them in her draughty school in Monmouthshire, while exploring forbidden underground passages. They hung on the dark, dank walls, fascinating the curious schoolgirl. In medieval times bats were admired for their friendly habit of roosting together, hanging on walls like bunches of grapes.

Most of us are still happy to give them roof if not room space, though bat colonies continue to be disturbed and destroyed when roofs are renovated, despite legal protection.

The loss of old hollow trees resulting from the modern compulsion for tidiness in the countryside has also been a blow to bat colonies. Food supplies have dwindled with a steep decline in the abundance and diversity of insects.

A pipistrelle needs to find 3,000 midges and mosquitoes a night to keep itself on the wing; other bats snap up moths, beetles and crane flies. Growing honeysuckle, night-scented stocks and other good nectar plants in our gardens can be a real boost for them. If you have space, plant a hedge or a native tree; these will encourage a good insect supply.

Look out for pipistrelles from sunset. They are our commonest bats; you see them twisting and turning around buildings, streetlights, hedges and trees. Brown long-eared bats fly close to trees, hovering like big butterflies, while Daubenton's hunt over water, seizing insects in their big, hairy feet.

A bat watching event is being held on **Saturday August 15th near Oswestry**. It involves a short ride on a vintage train, followed by a 1-mile walk back with Shropshire Bat Group, looking and listening for bats.

For full details see www.shropshirewildlifetrust.org.uk/whats-on



Garden Specials from RVT Newport



John Deere X105

42" side discharge deck
6.85 Kw petrol engine, continuously variable transmission
RRP £1,933 +VAT
Our price £1,660 +VAT (£1,992 inc VAT)
Mulch and collector kits available



FS55

Petrol strimmer
perfect for home gardens & small areas of grass
£195 inc VAT



John Deere X115R

36" rear discharge deck
6.85 Kw petrol engine, hydrostatic transmission, 300L collector
RRP £2,374+VAT
Our price £2,050+VAT (£2,460 in vat)



Single speed self propelled walk behind mowers

John Deere Run 41

16" cut, Ready Start petrol engine
RRP £333+VAT
Our price £283.33+VAT (£340 inc VAT)



John Deere Run 51

20" cut, Ready Start petrol engine
RRP £516+VAT
Our price £433.33+VAT (£520 inc VAT)



MS181

14" chainsaw ideal for occasional and professional users.
£200 inc VAT



Offer available on stocked machines only whilst stocks last. Offer prices only valid without a part exchange.

Call in today!!!

Rea Valley Tractors Audley Avenue Industrial Estate, Newport TF10 7BX

Tel: 01952 822922

paulyoung@reavalleytractors.com

Monday - Friday 8am-5pm

Saturday 8am-12 noon

www.reavalleytractors.com



This month's Puzzles & Brain Teasers.

This month's word puzzle has a Food theme.

Solutions can be found on Page 58. **Good luck.**

D	J	Z	S	N	B	S	Z	D	K	I	C	T	H	G	F	P
N	R	Z	G	R	L	R	E	I	Q	H	H	U	S	N	F	D
Z	N	U	E	R	V	V	L	I	E	Y	E	R	Y	D	W	Y
I	X	A	C	Z	A	M	E	E	R	I	E	K	K	W	F	B
Y	D	S	H	Z	R	P	S	M	S	R	S	E	W	X	I	O
V	R	D	P	V	Z	E	E	N	P	P	E	Y	A	A	Z	D
V	N	T	F	I	S	B	A	S	M	U	B	B	R	P	D	C
G	O	I	S	T	H	E	K	I	O	T	U	D	E	Y	U	J
L	S	F	I	N	B	C	Q	N	M	U	R	E	N	U	P	X
H	Y	C	N	M	T	W	N	Q	J	N	G	I	H	U	L	K
O	K	M	M	U	F	F	I	N	S	A	E	H	D	S	E	B
S	Q	S	E	I	R	R	E	B	W	A	R	T	S	K	L	I
D	A	L	A	S	R	K	S	J	K	S	S	O	L	M	P	J
P	I	Z	Z	A	C	J	H	T	Z	W	Z	O	E	F	P	T
S	F	W	W	I	N	Q	F	B	E	J	Z	M	V	O	A	H
K	H	G	H	X	H	K	U	E	I	A	I	S	H	D	J	J
S	K	C	D	R	L	L	N	I	A	F	K	V	T	D	I	Q

CHICKEN
BREAD
TUNA
SALAD
CHEESESTICKS
CHIPS
SMOOTHIE
APPLE
GRAPES
BLUEBERRIES
STRAWBERRIES
MUFFINS
TURKEY
BEANS
FISH
PIZZA
CHEESEBURGERS
STEAK

SUDOKU 21

		8	7	9		2		
	9							3
3		7	6	1	4			
				2		6		
	3	2		7		4	5	
		1		5				
			9	6	2	1		4
2							8	
		6		3	8	9		

SUDOKU 22

1				6	9		2	
			5	1			6	3
		8				1		
3						9		1
		6	4		3	2		
8		9						6
		3				5		
7	8			4	5			
	6		3	8				2

Did you find these puzzles too easy? Tell us at: editor@allaboutnewport.co.uk

Dates for your Diary...

Map locations available for all events, online at allaboutnewport.co.uk

Post your **What's On** events for free at <http://bit.ly/whatsonlocally> by **Monday 17th August, 5pm** to appear in the next issue of the magazine. Please note that information posted online and in magazine is provided in good faith. We ask that you contact the organiser to confirm dates, times and details, as we cannot be held responsible for inaccuracies.

Newport (Shropshire) and District Chamber of Commerce

Weekly/Monthly Event

The Chamber meet on the 3rd Monday of every month at Newport Cottage Care Centre, Upper Bar at 5.30pm. The Chamber is here to support you helping your local business to grow.

Newport Farmers Market

Weekly/Monthly Event

Newport Farmers' market is run on the 3rd Thurs of each month, and is well worth a visit. Located in The Square and also by the Butter Cross, next to St Nicholas church. The market runs from 9am - 2pm.

Newport Life Drawing and Figure Sculpting Workshops

Weekly/Monthly Event

Saturday mornings at Adams' Grammar School. For further information please call Michael on 07528489320 or email michaeljamespotter@hotmail.co.uk

Craft Club

Weekly/Monthly Event

We meet every Monday at 7pm to 9pm in Kitty Kraft shop St Mary street Newport. All necessary equipment and instruction will be supplied. Call Emma on 01952 820940 for more information.

Newport Bridge Club

Weekly/Monthly Event

We welcome duplicate bridge players of all standards. Novice to expert with or without partners. Join us on Tuesday or Thursday evenings 7pm. Cottage Care Centre, Upper Bar Newport. Our host system means you should always get a game. 01952 814474.

Trefoil Guild

Weekly/Monthly Event

Girlguiding for adults. Every 1st Thursday at the Cosy Hall, Water Lane, Newport, TF10 7LD. Phone Cris, 01952 253960 for more details.

Every SATURDAY NIGHT. Live Entertainment

Weekly/Monthly Event

Newport Navy Club, Bellmans Yard, Newport TF10 7AJ £3 per person admission for non-members. Pay on the door. For more info- Contact Jez (club steward). 07772611540

Bridge Class

Weekly/Monthly Event

EVERY MONDAY. Victoria Bridge Club. Learn how to play bridge, or improve your own abilities. everyone welcome. 7.30p.m. onwards. Newport Navy Club, Bellmans Yard, Newport. TF10 7AJ for more info- contact Jez (club steward) 07772611540

OPEN MIC. NIGHT ~ Every TUESDAY

Weekly/Monthly Event

Open Mic. Night. Every Tuesday. 8p.m. onwards. £1 admission. Price includes a raffle ticket. Newport Navy Club, Bellmans Yard, Newport. TF10 7AJ contact Jez (club steward) 07772611540 or Jude Paton (event organiser) at Hey Judes, Newport.

BINGO ~ every THURSDAY

Weekly/Monthly Event

50p admission for all guests. Eyes down at 7.45p.m. Bar open at 7.30p.m. Newport Navy Club, Bellmans Yard, Newport, TF10 7AJ. For more info- Contact Jez (club steward). 07772611540 Friendly atmosphere, and a good night out at a budget price.

POOL NIGHT ~ every Wednesday during season

Weekly/Monthly Event

Spectators or players welcome for weekly matches during the pool season. Alternate venue between The Newport Navy Club, Bellmans Yard, Newport, Shropshire. TF10 7AJ and the opposite team's base. For more info- Contact Jez (club steward). 07772611540

DOMINOES ~ every FRIDAY during the season

Weekly/Monthly Event

Spectators or players welcome for weekly matches during the dominoes season. Alternate venue between The Newport Navy Club, Bellmans Yard, Newport, Shrops. TF10 7AJ and the opposite team's base. For more info- Contact Jez (club steward). 07772611540

TAI CHI (Moy Style)

Weekly/Monthly Event

A unique form of Tai Chi promoting health and well being. Beginners class Wednesdays 10.00 - 11.00 am in Church Aston Village Hall, Wallshead Way, Church Aston TF10 9JG. Suitable for adults of all ages and abilities Contact Tony Beckett 07983 404245



Tern Valley Vintage Show

15 & 16 August 2015 - Over 600 exhibits including Steam Engines, Vintage & Veteran Cars. 10am to 5pm at Chetwynd Deer Park, Newport, Shropshire

- Adults £8, Concessions £7, Children 5-16 £4 • Free car parking with tractor/trailer rides from Car Park onto Show Ground
- Vintage Auction on Saturday afternoon/evening
- Full Bar, Catering & Toilet facilities • Weekend camping available (frongader@hotmail.co.uk) • Various Vehicle Clubs, Horses, Bernese Mountain Dog Display, Bouncy Castle and more.

Newport Writers Circle

Weekly/Monthly Event

Local writers group meeting in Newport on the second Wednesday of the month (except August). If you are interested in joining the group please contact Mark Pearce on 01952 550557 or markpearce17@hotmail.com for more information.

Bingo Every Friday & Sunday Evening at Newport Royal British Legion Club

Weekly/Monthly Event

Bingo Session every Friday and Sunday Night at Newport RBL Club. Situated on Audley Road, Newport TF10 7DP. Doors open 7pm. Bar Open 7pm. Eyes Down 8pm. For more info contact Colin Farge (Secretary) on 07977 488 619.

Dressmaking courses and workshops

Weekly/Monthly Event

Dressmaking courses run on Thursday mornings 10.00am to 12.30pm and Thursday evenings 7.30 - 9.30pm at Cosy Hall, Newport. Courses last for 6 weeks. Monthly Sewing on Saturday; workshops run 2.00-5.00pm. Catherine 01952 276061.

Edgmond Toddler Group, Edgmond Village Hall

Weekly/Monthly Event

Every Thursday in term time 10.00 - 11.30am. Lots of toys for pre-school children and babies, craft activities, songs and snack time. Refreshments for adults. £1.50 for first child and 50p extra for each additional child. New faces always welcome.

Bradford Arms Folk Club

Weekly/Monthly Event

Opening 10th April 2015 - New weekly folk club running every Friday from 8.30pm at the Bradford Arms, Ivetsey Bank, near Wheaton Aston (on A5 near Weston Park) Contact Linda 01952 526520 for more details.

Local Fitness Classes With Nikki

Weekly/Monthly Event

Mon 10-11am Zumba (easy) @ Church Aston Village Hall Tues 6.30-7.30pm Zumba @ Cosy Hall Thurs 7-8pm Body Balance @ Lilleshall Memorial Hall Fri 9.30-10.30am Zumba (easy) @ Cosy Hall ALL LEVELS WELCOME £4 per class Contact Nikki 07967 343728

Acoustic Music Night

Weekly/Monthly Event

Hosted by Pete Meyrick and Andy Wain. All styles of Musicians and Singer/Songwriters welcome. First Wednesday every Month, 8.30pm start. At the Cock Inn, Woodseaves. Phone 01785 284343.

Edgmond Village Hall Afternoon Teas

Weekly/Monthly Event

Every Thursday afternoon 2.30-4.30pm. £3.00 buys a pot of tea or coffee and a hearty slice of homemade cake. Regular events and produce sales. Please do come and join us.

Adult Yoga

Weekly/Monthly Event

Small friendly class. Suitable for Beginners. Dru Yoga Starting with activation to some lively music, then flowing sequences, postures, breathing techniques and deep relaxation. Mondays 10am to 11am at Lilleshall Memorial Hall Tel 07970 731174

Midlands Rat Club - & Fancy Rat Shows

Weekly/Monthly Event

The Midlands Rat Club (MRC) is the area's club for fancy rat lovers, pet rat owners and breeders. Fancy rat shows are held every two months. Free entry to venues - Visitors welcome. For details of next meeting, please visit midlandsratclub.org

Newport Toy Library

Weekly/Monthly Event

Every Friday Morning at the Cottage Care Centre. £2 a year membership, toys to borrow from 10p per week. For the under 5s we have outdoor ride on tractors, cars, trikes and bikes, slides, trampolines, shape sorters, electronic toys and stairgates.

Acoustic Music Club

Weekly/Monthly Event

Acoustic Music Club. Every Tuesday at 8.30, starting 9th June. At The Three Stirrups, Engleton Lane, Brewood, ST19 9DZ hosted by Pete Meyrick and Andy Wain. All Musicians and Singers welcome. For more info contact Andy 01785 823249.

Rush Hockey

Weekly/Monthly Event

Consisting of small 5/6 aside games, the ball is bigger & lighter with only a handful of rules - it's social, fun & good exercise. No previous ability required! Lilleshall National Sports Centre - Wednesdays 7.30-8.30pm. £1 <http://bit.ly/1KoYCQg>

Yoga

Weekly/Monthly Event

Suitable for mixed ability participants, including those who have never done yoga before. Lilleshall National Sports Centre - Wednesday's 6.30pm - 7.30pm. £4.00 per session or £30.00 for an 8 week block <http://bit.ly/1cRVGNU>

Forever Fit

Weekly/Monthly Event

Designed for those 50+, these activities are a great way to get fit, stay active & meet new people. Lilleshall National Sports Centre, Friday mornings 10am-12.30 includes a range of activities for you to choose from. <http://bit.ly/1Lt9w5d>

Over 50s Racketball

Weekly/Monthly Event

For all abilities at Lilleshall National Sports Centre, Friday's 11.30 - 12.30 - a very fun and social way to get fit with new players always made to feel welcome. £3.50 per session

Scarecrow Festival & Trail

5 & 6 September 2015 - Weekend full of fun and events for the family. Held in the villages of Moreton, Outwoods & Bromstead. 10am - 4pm.

Villagers are creating scarecrows representing film and cartoon characters. A trail for children and adults around the villages to see 55+ scarecrows. Enjoy classic cars, vintage tractors and military tanks and miniature fairground organ. Refreshments and Toy & Craft fair at the Millennium Community Centre (TF10 9DS). Free entry in the Centre to an evening of music with Vinyl Tap.



No Strings Badminton

Weekly/Monthly Event

Pay and play semi-structured sessions that are co-ordinated but not coached at Lilleshall National Sports Centre, Monday's 6.30pm - 7.30pm, £2 per session. Sociable and fun way to get fit - just grab a racket, rally around friends and head on court.

Easy access walks for all - Walkabout Wrekin

Weekly/Monthly Event

Every Thursday at leaving at 6.00pm (please arrive 10mins early) from the car park at the Red House Lilleshall. Get back exercising with local area walks from 15 to 90 mins duration depending on your ability. Steve Shaw 01952 810314

PAINT WITH JODIE WYTON - every Saturday

Weekly/Monthly Event

EVERYONE CAN PAINT you just need a friendly demo, the right equipment, enthusiasm...and a sense of fun! Creativity time is 10am-2pm. To bring out your inner artist call Jodie on 07598 479 137, email jodie.wyton@gmail.com or visit www.jodiewyton.com

Dalen Singers of Newport

Weekly/Monthly Event

A small friendly, mixed choir founded 30 years ago in Newport. We rehearse Tuesday evenings at 7pm at Trinity Church, Wellington Rd, Newport. We sing a light style of music. If you would like to meet us just come along or call 01952 811741.

Sing4Fun at Burton Borough School 7.4-9pm Every Thursday

11 September 2014 - 11 September 2020

Come and join the regions newest POP, ROCK, JAZZ choir for both men and women. Great, enjoyable arrangements of songs from Abba to Adele, Beatles to Bruno Mars. FREE taster night.

Argentine Tango Classes

16 October 2014 - 22 December 2016

Thursdays from 7.30 at Cosy Hall, Water Lane, Newport TF10 7LDTango Newport teach complete beginners this wonderful dance NO experience necessary - Come along with or without a partner and discover how quickly Bruce and Tricia get you dancing.

Apley Dog Show

15 August 2015

The first Apley Dog Show will run on Sun 15 Aug, 10-4pm at Apley Farm Shop, starring the Paws for Thought dog display team. Pedigree & novelty classes. Entry fee £2 for the first class, then £1.50 per class thereafter. Raising funds for dog charities.

The Wickets at Wheaton Aston open for the NGS

30 August 2015

A beautiful, quirky and interesting garden full of surprises and interest. Open for the National Gardens Scheme charity at 47 Long Street, Wheaton Aston ST19 9NF 130 to 5pm. Teas available. Contact Tony Bennett 01785-840233.

Apley Farm Shop Craft Fair

06 September 2015

Enjoy a day out to Apley Farm Shop's wonderful Craft Fair. We have local crafters selling handmade stationary, jewellery, accessories, photography, art, kitchenware, presents and so much more. 10am - 4pm Free entry.

M & Co Fashion Show in aid of NCCC

11 September 2015

Fashion Show at M & Co, High Street, Newport in aid of the NCCC. Tickets £6 includes glass of wine and nibbles. Starts 7pm. Tickets available from M & Co and NCCC.

Heritage Day in Newport

12 September 2015

Newport History Society and Newport's historic Guildhall staff celebrate our wonderful 15th century Guildhall (1, High Street). Tours of the building, metal detecting, writing with quill pens and computer presentations. FREE EVENT. From 10am - 4pm

World War 1 in 1915

21 September 2015

Computer presentation and talk by David Adams 7.30pm Baptist Hall (opp Victoria Park), Water Lane, Newport. Visitors £3 incl refreshments.

Apley Farm Shop Harvest Food Festival

26 September 2015

Enjoy free tasters from local producers, discover delicious food and enjoy a day out with the family. Free entr 9.30am - 5.30pm www. ApleyFarmShop.co.uk

Apley Harvest Food Festival

26 September 2015

On Sat 26 Sept, 9.30-5.30pm, Apley Farm Shop has invited over 20 local food & drinks producers to come & offer free tasters to its customers. It's a feast at harvest time, a delicious food festival. So come to Apley to Taste, Discover, Enjoy.

Harvest Food Festival

26 September 2015

On Sat 26 Sept, 9.30-5.30pm, Apley Farm Shop has invited over 20 local food & drinks producers to come & offer free tasters to its customers. It's a feast at harvest time, a delicious food festival. So come to Apley to Taste, Discover, Enjoy.

History Society planning meeting

28 September 2015

All members invited to attend. The Swan Inn, Lower Bar. 7.30 pm

Midlands Rat Club - Fancy Rat Show.

03 October 2015

Fancy Rat Show. Calf Heath Village Hall, Calf Heath, Wolverhampton. WV10 7DW. Full details - www.midlandsratclub.org Rats make excellent pets for all ages. They are intelligent, fun & easy to train. Judging starts at 11. Free entry to hall.

Apley Farm Shop Craft Fair

04 October 2015

Enjoy a day out to Apley Farm Shop's wonderful Craft Fair. We have local crafters selling handmade stationary, jewellery, accessories, photography, art, kitchenware, presents and so much more. 10am - 4pm. Free entry.

Newport Cottage Care Centre Quiz Night

09 October 2015

NCCC Quiz Night - Tickets £6 per person - includes supper. Max 4 persons per team. 7.30pm - 10.30pm. Raffle & Bar.

Talk Chetwynd in History

19 October 2015

Robin and Joanna Spencer from Chetwynd Medieval Heritage Society will be talking to us about Chetwynd's long history from before the Domesday Book to it being granted its own market. At Baptist Hall, Water Lane 7.30pm. Visitors £3 incl refreshments.

Apley Farm Shop Spookley Pumpkin Festival

24 October 2015 - 31 October 2015

Enjoy story telling, riding the Pumpkin Express, pumpkin carving and picking your own pumpkin from our pumpkin patch! Lots for children to enjoy with plenty of pumpkins & pumpkin carving www.ApleyFarmShop.co.uk

Made in America: finding American antiques & fine art in Britain

Freeman's, America's oldest auction house, located in Philadelphia will be sending several specialists to the UK in search of American-made fine and decorative arts, silver, porcelain, furniture and more. The eight day tour will include stops in Glasgow, Edinburgh, Shropshire and London with Weston Park, the 17th century stately home on the Shropshire \ Staffordshire border welcoming the Freeman's team for an **Open Valuation Day** in the Music Room at **Weston Park on Monday 3rd August**.

Experts from Freeman's will be on the lookout for pieces of Americana and offering valuations.

From William Penn who founded the Pennsylvania colony only to return home to England later, to nouveau riche American heiresses marrying British nobility for titles in the early 1900's, Yankees and Brits have been travelling across the pond for centuries. As a result, many American-made furniture, wares and paintings have found their way to the UK.

At Weston Park, Freeman's fine and decorative art specialists will be providing complimentary valuations. David Walker, Head of Fine Collections and English and Continental Furniture, Silver and

Decorative Arts will be also be providing definitive answers to those wondering: Is it American or British?

Colin Sweeney, Chief Executive of the Weston Park Foundation comments; "We are looking forward to welcoming specialists from the Freeman's team to Weston and we are delighted our American friends are making a stop with us in Shropshire on their tour."

Gareth Williams, Curator to the Weston Park Foundation adds: "Weston Park's collection – renowned for its international importance – has several works with American links in the form of paintings in the Dining Room by Robert Edge Pine. Pine was an artist who found new fame and fortune in Philadelphia and his works are in a number of important American collections"

Made in America: Finding American Antiques & Fine Art in Britain takes place in the Music Room at **Weston Park on Monday 3rd August 11am – 3pm**.

To register for your free valuation ticket please e-mail Juliet@weston-park.com. For further information please visit www.weston-park.com

*Join us for a great day out
this summer!*

Daily to Sunday 6th September

WESTON PARK




*1,000 acres of wide open space to explore
View the treasures in the House
Take a ride on the Miniature Railway
Run wild in the Adventure Playground*




WESTON-PARK.COM
WESTON-UNDER-LIZARD, NR SHIFNAL, SHROPSHIRE, TF11 8LE
Open daily from 23rd May – 6th September *giftaid it*

The Granary
GRILL & DELI






Enjoy our NEW Summer lunch and dinner menus in the **Grill**
Pick up speciality ingredients in the **Deli**
Visit Weston Park's House and Grounds
View the latest exhibition in the **Art Gallery**

"eating shopping relaxing"

The Granary Grill & Deli, Weston Park,
Weston-under-Lizard, Nr Shifnal, Shropshire
TF11 8LE | 01952 852107

granarygrill.com



The Tranquillity of the Shropshire Union Canal

About:

Photography has been Robert Cartwright's passion ever since he was given a Kodak Baby Hawkeye camera in 1950.

Trained as an Electrical Engineer, Robert was made redundant in 1978 and turned his back on the profession in favour of a new career in photography.

He has successfully presented a number of exhibitions, the images highlighting his love of the countryside in his local area.

Robert has built up an extensive range of photographs, documenting locations, such as the canalside at Gnosall, over the years and his website www.ccstafford.co.uk is well worth a visit.

When & Where:

Shropshire Union Canal, Gnosall, June 2015.

Please send your photographs and details of what, where and when, to:

**editor@allaboutnewport.co.uk
by 5pm, Monday 10th August, 2015**

Please note we can only accept photographs where the person providing them owns the copyright or, has the permission of the original photographer. Photographs should ideally be copies of the original (uncropped) image.

Adams' Peleton

About:

An invitation from DT teacher Mr Kaye, saw nine teachers rise to the challenge to cycle to work, with one cycling from as far as Nantwich, setting off at 5.20am.

Mr Kaye hopes it will encourage others to cycle to work more often, while we hope they're not too tired for the return trip!

When & Where:

9th July, 2015 at Adams' Grammar School, Newport.



Community benefits from 2CA efforts

About:

In recent months, 2CA Scouts have been busy completely changing an area they call 'under the Bridge'.

An area the old railway line used to run through at the back of the village hall. They have up-cycled and had donations from local firms to help with this project. The area is now safe and usable and will benefit the scout group and Church Aston Infants school, as well as the local community.

Where:

Church Aston.

To see your local event in the next issue, please send your photographs and details of what, where and when, to:

editor@allaboutnewport.co.uk
by 5pm, Monday 10th August, 2015

Please note we can only accept photographs where the person providing them owns the copyright or, has the permission of the original photographer. Photographs should ideally be copies of the original (uncropped) image.





1

Through the Garden Gate

About:

Newport In Bloom's 'Through the Garden Gate' event, held on Sunday attracted over 250 visitors and raised £2000.

10 beautiful town and countryside gardens and Meadow View Road allotments opened to the public - some opened for the first time, all offering something different. Lunch and afternoon tea were also available - the delicious homemade cakes proved to be a real success.

Newport In Bloom Chairman Daphne Rogers was "delighted with the fantastic amount raised and thanked those who opened their gardens and all who had helped to make this a very special day. The feedback from many of the visitors was very rewarding and all involved should be very proud of all their hardwork"

She also added "All monies raised will be put towards the costs of planting in 2016 and hoped everyone would agree, that the high street planters and baskets this year are absolutely stunning".

When & Where:

Sunday 12 July, 2015 in the Newport area.

To see your local event in the next issue, please send your photographs and details of what, where and when, to:

editor@allaboutnewport.co.uk
by 5pm, Monday 10th August, 2015

Please note we can only accept photographs where the person providing them owns the copyright or, has the permission of the original photographer. Photographs should ideally be copies of the original (uncropped) image.



2



3



4

Through the Garden Gate

Photos:

- 1 - Vonnice Blakeman and Julie Cooper
- 2 - Lynda Morris and Anne Meredith
- 3 - Veronica Bould and Tony Stiles
- 4 - Nicola and Neville Thorne
- 5 - Margaret Hattersley, Maggie Duggan, Jane Stiles and Jacqui Williams
- 6 - Pat and Tom Davy
- 7 - Michael Shepperd, Lynda Morris and Anne Meredith
- 8 - June Millward, Chris Shepperd and Alison Hayward
- 9 - Barry Coggle, Adrienne Coggle and Tracy Coggle
- 10 - Steffi Gorski, Lynn Hemming and Jenni Gorski
- 11 - Wendy Leith and Liz Palin



FOR ALL YOUR LANDSCAPING NEEDS



For a high quality service in:

- Blockpaving • Tarmacing • Patios
- Garden Walls • Decking
- Turfing & Garden Maintenance

Call for your **FREE** Quotation

GASP
GROUNDWORKS

Call: 01952 606785
07964 817678
or 07526 529055

www.gaspgroundworks.com

Let's Get It Shot



Providing a wide range of services from video production and promotional material, to sound for concerts, events and discos! Based in Newport we love working with local groups, events and businesses.

Get in touch to see how we can help you today

Jonathan Newton - Let's Get It Shot
Video & Sound Services 07595 760527

info@letsgetitshot.co.uk

Car Spares, Tools & Accessories

Huge Range of Stock Available



AUTOMOTIVE COMPONENTS (SALOP) LTD Contact Phil or Dave on **01952 820247**

Salter's Lane, Newport TF10 7LB

Monday-Friday 8.30am-6pm; Saturday 9am-3pm

www.carpartsinnewport.co.uk



Does your Car need an MOT, Service or Repairs?

Bellmans Yard Garage can help.



FREE

Local Collection
and Delivery

- Ideally located right in the centre of town
(Just off the High Street, opposite the NatWest Bank and between
Nock Deighton and the Co-op Bank)

- Free courtesy cars • Free local collection and delivery



- Local breakdown recovery service • MOT tests on-site
- Servicing and repairs to all makes • Diagnostics
- Wheel alignment • Air conditioning and much more...

Bellmans Yard, High Street, Newport TF10 7AJ

Tel: 01952 814808 or 811076

Email: info@brownsnewport.co.uk | www.brownsnewport.co.uk
Open 8am-6pm, Monday-Friday, Saturday (by appointment)



Electrical Contractors

A friendly family business offering a reliable and competitive service by fully insured NICEIC Registered Electricians

- All Electrical Work Undertaken
- Fuse board upgrades
- House Rewires
- Security Alarms (Wired & Wireless)
- CCTV
- TV Aerial Upgrades
- Electrical Safety Reports (Landlords Certificate)
- Flat Screen TVs, Wall Mounted Installations
- "No Wires to be Seen"



FREE QUOTES & ADVICE



For special offers and services visit:
www.buzzsparks.co.uk

Call your LOCAL Friendly Electrician
'Buzz' on: 01952 272382 or 07714 216244
Email: buzzsparks@btinternet.com



Expert dressmaking tuition
in Newport & Shrewsbury

• Private Tuition • Courses • Workshops

Enjoy learning to make your own clothes that
look fabulous and fit perfectly.

Contact Catherine on 01952 276061
www.lovedressmaking.co.uk



LNS POOCHIES

Doggy Day Care • Pet Taxi
Dog Hydrobathing Service
Pet Microchipping

01630 638638 or 07794 742970
Hinstock, Market Drayton TF9 2SP

www.lnspoochies.co.uk | claudia@lnspoochies.co.uk
Facebook LNS Poochies

SPACE FOR CALM - CARIAD THERAPIES

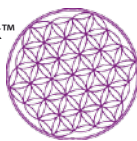
*Would you like calmer, more relaxed children?
Would you like to have a 2 minute gift to support your child's
development, self-esteem and help resolve anxious behaviour?*

- Accredited Goulding SleepTalk™ Consultant
- Baby Massage • Relax Kids Coach • SleepTalk™
- Parent Relaxation Treatments

Contact Rom 07894 812440

Email: cariadtherapies@outlook.com

www.spaceforcalm.co.uk | www.cariadtherapies.com



Cariad Therapies - Space for Calm - Relax Kids in Newport
Find us on Facebook

Soft Furnishings

Made to measure....



- Curtains • Blinds
- Cushions...

and other soft furnishings for
your home

FREE MEASURING AND ADVICE
Fitting service also available

Call Rachel Harris 01952 840748

Reiki ∞ Angelic Reiki Ear Candling

Holistic Heaven
Call Jane Frost on 07779 277045

Based at The Back & Body Care Clinic, Newport
or The Rock, Telford. Call 01952 825042

jane.frost@blueyonder.co.uk

GREGORY PLUMBING

FOR ALL YOUR PLUMBING REQUIREMENTS



MARK GREGORY-CADMAN
YOUR LOCAL PLUMBER

01952 933394

07860 748546

MAGC1969@HOTMAIL.CO.UK
21 OAKWORTH CLOSE, TELFORD

Moving or Improving? Commercial or Domestic

- Shopfitting
- Wall/Floor Tiling
- Garage/Room Conversion
- Laminate/Hardwood Floors
- Bespoke & General Joinery
- Complete Bathrooms & Kitchens
- Painting & Decorating
- Garden Maintenance



Professional, friendly reliable
service offering a
free no obligation quotation.

Worked on 'TV' and
'Celebrity D.I.Y.' programs, plus 'If it's Broke Fix It',
Ryobi and Aviva promotional videos.

**Spoton Building & Property
Maintenance Services**



Call on Barry Tongue 07966 458620

Tel: 01630 638758 or email: baz@cobweb.fsnet.co.uk

Welcome to Newport

Newport is a beautiful market town with notable historical buildings, landmarks, fantastic independent shops and boutiques, traditional pubs, cafes and more.

Discover more on our Visitor Experience page at; <http://bit.ly/1hj1l7C>

- P** **Free (Official) Car Parks:** Water Lane East, Victoria Park, Stafford Street, New Street
- Free High Street Disabled Parking:** There are 3 official designated areas
- Wi-Fi** **Free Wi-Fi Hot Spots:** Waitrose Newport, Gourmet Pasty Co., Guneros Sandwich Bar, The Barley, Costa Coffee, Smallwood Lodge
- Shopping Basket** **Newport Indoor Market Hall:** See Markets page for general opening times
- £1** **Banks/Building Societies & ATMs:** Lloyds Bank (1), Yorkshire BS (2), HSBC (3), Barclays (4), Nationwide (5), NatWest (6), Co-operative (7)
- S1** **Public Services:** Post Office (1), Library/First Point Newport (2)
- 1** **Schools:** Adams' Grammar (1), Newport CofE Juniors (2), Burton Borough (3), Newport Infants (4), Newport Girls' High (5), Moorfield Primary (6), SS Peter & Paul Catholic Primary (7), Castle House School (8)
- B1** **Bus Stops:** Stafford Street (1), High Street (2), High Street (3)
- +** **Medical Services:** Wellington Road Surgery, Linden Hall Surgery (Station Road)
- W1** **Places of Worship:** St Nicholas Church (1), Newport Baptist Church (2), Trinity Church (3), Catholic Church of SS Peter & Paul (4)
- People** **Public/Disabled Conveniences:** Situated in Stafford Street car park

Mylocality discount card holders. **Spend & Save Locally,** with these independent businesses. (More details on back page)



- | | |
|---|--|
| <ul style="list-style-type: none"> a Chetwynd End <ul style="list-style-type: none"> • Shropshire Heat b Lower Bar - High St - New St <ul style="list-style-type: none"> • Automotive Components • Ace Computer Systems • The Cake Academy c New St - High St - Square <ul style="list-style-type: none"> • Cookshop Newport • Newport Complementary Health Clinic d St Marys St & Indoor Market Hall <ul style="list-style-type: none"> • Daisy Chain • Duignan Phelps Optometrists • Kitty Kraft • Nova Cycles • Tranquility Beauty Salon • Guneros Sandwich Bar & Takeaway • Hey Judes and Cups & Wands (Market Hall) e Stafford St - High St <ul style="list-style-type: none"> • The Barley Pub • Julia Price at Boughey House | <ul style="list-style-type: none"> f Square - High St - Wellington Rd <ul style="list-style-type: none"> • Smileworks • Wycherleys Dental Practice • HoneyComb Hair and Beauty Company • InSpirit Hair & Beauty g High St - Avenue Rd <ul style="list-style-type: none"> • Samuels of Shropshire • What Women Want • Henshalls Insurance Brokers h Granville Ave <ul style="list-style-type: none"> • NovaFord j Springfields Ind. Est. & Station Rd <ul style="list-style-type: none"> • Carpet Loom & Newport Beds Ltd • The Ferns B & B k Audley Ave Enterprise Park (A518) <ul style="list-style-type: none"> • Fish in a Box m Upper Bar <ul style="list-style-type: none"> • Cariad Therapies |
|---|--|





Next Month...

As you read this issue, we are already preparing a great selection of locally inspired features from around the area. *Including...*

A Sting in the Tale

In next month's featured interview, we talk bees, and being shortlisted for the Samuel Johnson Prize with Edgmond raised, Dave Goulson.

Sugar Free Surprise

Hannah at Cookshop Newport will be sharing her recipe for a healthy sugar-free treat.

Shropshire Wildlife Trust

Sarah Gibson of Shropshire Wildlife Trust will be providing an interesting and informative feature.

Reviews

Our monthly selection of product and app reviews. Covering new releases, technology and locally available products.

Dates for your Diary

Plan your month with our diary of local meetings, courses, gigs and specialist events.

Keeping it Local

From Click & Collect to Local Discount Card to Local Jobs just visit allaboutnewport.co.uk



Shop Online with Local Retailers

Click & Collect means you can Buy Online and Collect in-Store at a time to suit you.

<http://bit.ly/mylocalshops>



Shop & Save in Newport

You could be saving money on Ladies Fashion, Food & Drink and so much more...

<http://bit.ly/mylocality>

Local Jobs Directory

Full and Part-Time Vacancies from around the local area. Businesses, it's **Quick, Simple and Free** to post your job vacancies online.

<http://bit.ly/mylocaljobs>

Your Business in Print & Online

Is your current advertising delivering the right coverage for your business?

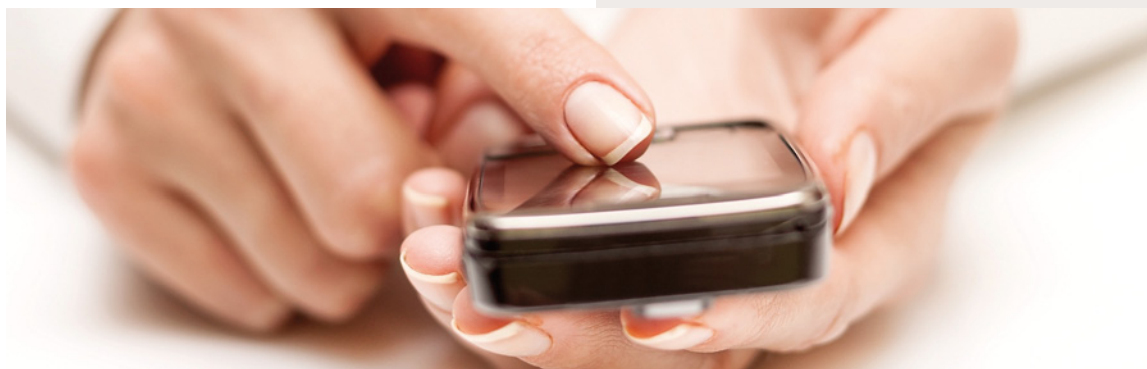
All About Magazine prints 15,000 copies, delivers over 13,000 door-to-door with the remaining dropped at selected pick-up points such as Waitrose Newport.

<http://bit.ly/allaboutmagazine>

Online Advertising £10 p/yr

Recent studies suggest the top cited information searched for on local businesses were; products/services, phone numbers, location and opening times. **That's why** all our Businesses get Google Maps, Opening Times and space for their Products/Services.

<http://bit.ly/advertisingworks>



Useful Numbers

Newport Town Council.....	01952 814338
Newport Town Library.....	01952 382965
Telford & Wrekin Council.....	01952 380000
Recycling, Rubbish and Litter	01952 384384
Planning Department.....	01952 380380
Council Tax and Benefits.....	01952 383838
Shropshire Council (std rate).....	0345 678 9000
Inland Revenue Helpline.....	0845 900 0444
Tax Credits Helpline.....	0845 300 3900
Police, Fire, Ambulance.....	999
Police (Non-emergency calls).....	101
Electricity (Emergency).....	0800 052 0400
Gas (Emergency).....	0800 111 999
Severn Trent Water (Emergency)	0800 783 4444
Shrop Doc	0844 406 8888
The Princess Royal Hospital.....	01952 641222
The Shropshire Nuffield Hospital.....	01743 282500
NHS Direct (Calls are Free).....	111
Newport Cottage Care Centre	01952 820893
Childs Ercall Jubilee Hall.....	01942 840572
Adams' Grammar School.....	01952 386300
Burton Borough School.....	01952 386500
Castle House School.....	01952 811035
CHerubS Nursery	01952 811035
Church Aston Infant School.....	01952 386390
Church Eaton Endowed (VA) Primary Sch	01785 823089
Edgmond Hall.....	01952 810799
Gnosall St Lawrence CoFE Primary School....	01785 822391
Harper Adams University.....	01952 820280
Haughton St Giles CoFE Primary School.....	01785 780511
Lilleshall Primary School.....	01952 388430
Moorfield Primary School.....	01952 386470
Muxton Primary School.....	01952 387690
Newport CoFE Junior School.....	01952 386600
Newport Girls' High School	01952 797550
Newport Infant School.....	01952 386610
Sheriffhales Primary School.....	01952 460204
SS Peter & Paul Catholic Primary School	01952 386450
St Peter's CoFE Primary Edgmond.....	01952 811692
St Marys CoFE First School & Nursery	01785 841463
Tibberton CoFE Primary School.....	01952 387790

Opening Times

Newport Town Council (The Guildhall Offices)

Monday - Friday 10am - 3pm, Sunday CLOSED

Newport Library

Monday 10am - 4pm, Tuesday 10am - 5pm,
Wednesday 10am - 6pm, Thursday CLOSED,
Friday 9.30am - 5pm, Saturday 9.30am - 4pm

The Linden Hall Surgery (Station Road)

Monday- Friday: 8am to 6pm,
Tuesday evening: 6.30pm - 8.20pm
Wed evening: 6.30pm - 8.20pm

Wellington Road Surgery

Monday - Friday 8am - 6.30pm
(Phone lines available 8.30am - 6pm)

Newport Post Office

Monday - Friday 9am - 5.30pm,
Saturday 9am - 12.30pm, Sunday CLOSED

Newport Heritage Centre

Saturday 10am - 2pm, Monday - Friday
and Sunday CLOSED

Granville Community Recycling Centre

Grange Lane, Red Hill TF2 9PB

March - October: Monday 8am - 4.30pm,

Tuesday 8am - 4.30pm

Wednesday - Thursday CLOSED,

Friday 8am - 4.30pm

Saturday 8am - 4.30pm, Sunday 8am - 4.30pm

Bank Holidays 8am - 4.30pm

November - February: Monday 8am - 4.30pm,

Tuesday 8am - 4.30pm,

Wednesday - Thursday CLOSED,

Friday 8am - 4.30pm, Saturday 10am - 3.30pm,

Sunday 10am - 3.30pm

Bank Holidays - 10am - 3.30pm

Telford Council Bin Days - <http://bit.ly/mybinday>

Staffs Council Bin Days - <http://bit.ly/staffsbinary>

This month's Solutions and Answers are...

- - - - - B S - - - - C T - - - -
 - - - G R - - E - - H H U - - - -
 - - - E R - - - I E - E R - - - -
 - - A - - A - - E R - E K - - - -
 - D S - - - P S - S R S E - - - -
 - - - P - - E E N - - E Y - - - -
 - - - F I S - A S - - B B - - - -
 - - I - T H E - - - T U - E - - -
 - S - I - B C - - - U R E - U - - -
 H - C - - - - - - N G I - - L -
 - K - M U F F I N S A E H - - E B
 S - S E I R R E B W A R T S - L -
 D A L A S - K S - - - S O - - P -
 P I Z Z A C - - T - - - O - - P -
 - - - - I - - - - E - - M - A -
 - - - H - - - - - A - S - - - -
 - - C - - - - - - - - K - - - -

5	6	8	7	9	3	2	4	1
1	9	4	2	8	5	7	6	3
3	2	7	6	1	4	5	9	8
4	8	5	3	2	9	6	1	7
6	3	2	8	7	1	4	5	9
9	7	1	4	5	6	8	3	2
8	5	3	9	6	2	1	7	4
2	1	9	5	4	7	3	8	6
7	4	6	1	3	8	9	2	5

SUDOKU 21

1	3	4	8	6	9	7	2	5
2	9	7	5	1	4	8	6	3
6	5	8	7	3	2	1	9	4
3	7	2	6	5	8	9	4	1
5	1	6	4	9	3	2	8	7
8	4	9	1	2	7	3	5	6
4	2	3	9	7	6	5	1	8
7	8	1	2	4	5	6	3	9
9	6	5	3	8	1	4	7	2

SUDOKU 22

There were **6 Differences** this month. Did you find them all?





QUALITY CRAFT PRODUCTS

Décopatch - Airfix - Crafter's Companion -
Pinflair - Modelling and more!



Kitty Kraft will be holding childrens activities during the school holidays every Monday, Tuesday and Wednesday afternoon 1-3pm. and Fridays 4-5pm.

Everything will be provided to complete each project, all you need to bring is a little imagination and a smile.

Call Emma 01952 820940

for full details and to book your space.



Craft Club

Join us every Monday at 7pm to 9pm in Kitty Kraft shop St. Mary's Street, Newport.
All equipment and instruction will be supplied.

Call Emma on 01952 820940

for more information.



14a St. Mary's Street, Newport, Shropshire, TF10 7AB

01952 820940 www.kittykraft.co.uk

MyLocality

your local discount card

Use your card to Shop & Save in Newport



What Women Want



Julia Price at Boughey House



Daisy Chain

Shop & Save in Newport with these and other MyLocality partners. Latest offers at www.myl Locality.me

Only £10. No Renewal Fees! Buy yours from

www.myl Locality.me/buy or Cookshop Newport • Daisy Chain • Hey Jude's • NovaFord

- › Ace Computer Systems UK Ltd › Automotive Components Ltd › Cariat Therapies
- › Carpet Loom and Newport Beds Ltd › Cookshop Newport › Cups and Wands
- › Daisy Chain › Duignan Phelps Optometrists › Fish in a Box › Guneros Sandwich Bar & Takeaway › Henshalls Insurance Brokers › Hey Jude's › HoneyComb Hair and Beauty Company › InSpirit Hair & Beauty › Julia Price at Boughey House › Kitty Kraft
- › Newport Complementary Health Clinic › Nova Cycles › NovaFord
- › Samuels of Shropshire › Shropshire Heat › Smileworks › The Barley
- › The Ferns B & B › The Orchard › Tranquility Beauty Salon › What Women Want
- › Wycherleys Dental Practice



By shopping locally you're helping to support your local High Street. Thank you.