

# ALL ABOUT *Magazine*

YOUR MONTHLY MAGAZINE FOR NEWPORT & THE SURROUNDING AREA

ISSUE 14 | NOVEMBER 2015

PICK UP YOUR  
**FREE**  
LOCAL COPY



## **The Late Show**

Easy to grow perennials, ideal for injecting some zing into November and possibly beyond

## **Cranberry and Marzipan Loaf**

A sponge full of seasonal flavours from Hannah of Cookshop Newport

CONNECTING LOCAL PEOPLE & BUSINESS AT HOME, ONLINE & MOBILE

DELIVERED FREE TO 15,000 LOCAL HOMES AND BUSINESSES EVERY MONTH





# Is Your Conservatory Too Cold In The Winter And Too Hot In The Summer

TRANSFORM YOUR CONSERVATORY INTO A 'ROOM FOR ALL SEASONS'  
WITH A LIGHTWEIGHT TILED ROOF SYSTEM FROM ABBEY

**Save 25%**

ON ALL ORDERS PLACED  
DURING NOVEMBER

**0% APR**

FINANCE AVAILABLE  
(ASK FOR DETAILS)



- ✓ High Performance Insulated Warm Roof Conversion System
- ✓ Comfortable Ambient Temperature All Year Round
- ✓ Wide Range Of Roof Colours And Finishes Available
- ✓ Lightweight Aluminium Frame
- ✓ Energy Cost Saving
- ✓ Reduces Rain Noise And Glare



## Change Your Tired Old Conservatory Roof

FOR A SELF CLEANING THERMALLY EFFICIENT GLASS ROOF FROM ABBEY

This intelligent glass reflects over 60% of the sun's solar energy so your new double glazed conservatory won't become unbearably hot in the summer. Solar glare is reduced too, creating a beautifully ambient environment.

A combination of low emissivity inner glass and argon gas filling means this glass roof system gives twice the insulation of ordinary double glazing. This reduces energy costs and keeps your conservatory warmer in winter.

You'll appreciate the special self-cleaning coating with a microscopic film which helps daylight and water to breakdown and wash away dirt and grime.



Put your trust in our genuine, family-run firm for a first-class service carried out to the highest of standards at very competitive prices. Our company has more than 40 years of experience in the field, so rest assured you're investing in the best. Call us today for a FREE NO OBLIGATION QUOTATION.

**Abbey Insulation 01952 813213**

35 Upper Bar, Newport Shropshire TF10 7EH

info@abbeywindowcompany.co.uk | www.abbeywindowcompany.co.uk



**FENSA**

The Federation Of Small Businesses (FSB): Member 2192757 | FENSA Registered

Members of The Consumer Protection Association - Includes a 10-Year Insurance-Backed Guarantee



## Welcome

In this month's issue, we hear from RVS Newport Helpline. A service that provides friendly and inexpensive transport to appointments as well as shopping for any residents of Newport and the surrounding area who are unable to drive.

'People and Places - Cookshop Newport', celebrated its official opening by Newport Mayor Tim Nelson with an Open Day, which included special offers, demonstrations and a charity raffle, with proceeds going to Macmillan Cancer Support.

It's time to start thinking of gift ideas for Christmas. We've handpicked a selection of ideas from Newport's independent retailers on pages 30-31.

Please get in touch. It's the often untold, local stories from past or present, that readers are finding 'informative, educational and often entertaining'.

Karen and Martin  
@allaboutnewport | editor@allaboutnewport.co.uk

## Contents

*A selection of this month's features...*

**RVS Newport** - Started in 1991, the service has expanded its support for local residents ever since - **p13**

**Cranberry and Marzipan Loaf** - A sponge full of seasonal flavours, from Hannah Tranter of Cookshop Newport - **p14**

**AA Award Success** - Local hotel and restaurant, Goldstone Hall, is honoured to receive its AA Red Star award - **p15**

**Motor-racing Star at Adams'** - 11 year-old Ross Turner has ambitions to be a MotoGP rider - **p39**

**The Late Show** - Easy to grow perennials, ideal for injecting some zing into November and possibly beyond by Martin Blow - **p49**

**The Night the Proms came to Gnosall** - 'The most amazing evening of music and singing' - **p51**

**Autumn Leaves** - Sarah Gibson explains how fallen leaves benefit blackbirds, thrushes, wrens and robins - **p53**

Advertising & Editorial: 07973 385 929

Karen Woodcock: karen@allaboutnewport.co.uk

All About Newport Ltd, c/o MSA Ferndale, Suite 7, Nova House, Audley Avenue Enterprise Park, Newport, Shropshire, TF10 7DW

Deadlines - December 2015 Issue

Advertising & Editorial due by: **6th November 2015 (5pm)**

**15,000 Copies - Every Month - Your Free Local Magazine**

Copies are delivered to homes, businesses and selected pick-up points in Adbaston, Chetwynd Aston, Childs Ercall, Church Aston, Edgmond, Forton & Sutton, Gnosall, Gnosall Heath, Great Chatwell, Haughton & Church Eaton, Hinstock & Cheswardine, Knighton, Lilleshall, Lilleshall Hall & Golf Club, Newport, Muxton, Norbury, Outwoods, Moreton & Coley Mill, Sambrook and Chetwynd Park, Sheriffhales, Tibberton, Wheaton Aston and Woodseaves. Copies are also available from Waitrose Newport.

# SMART TV Deals

## ACE Computer Systems

Call 01952 820138



Image for illustration purposes only

Samsung 48" Curved Smart HD TV .....	<b>Only £649</b>
Samsung 48" 3D HD TV .....	£549
Toshiba 40" HD TV .....	£299
Samsung 24" HD TV .....	£169

## New, Refurbished & Repairs

- Computers • Laptops • Tablets • Phones
- Apple iMacs • Mac Books • iPads and iPhones



**We Sell...**

- TVs • Stationery • Vapourlite E-Liquids
- Parts & Accessories • Cables & Components

ACE Computer Systems offer on-Site Service & Support for Small Businesses and Home Users

### ACE COMPUTER SYSTEMS (UK) LTD

101 High Street, Newport, Shropshire TF10 7AY

**Tel: 01952 820138**

Fax: 01952 825483 | Email: [info@acecomputersystems.com](mailto:info@acecomputersystems.com)

[www.acecomputersystems.com](http://www.acecomputersystems.com)



## In Print & Digital

This magazine is available FREE for PC, iPad™, iPhone™ and Android™ smartphones?

<http://bit.ly/allaboutmagazine>



### Digital Edition - Share

Download, Read and Share features and reviews where you see this logo.



### Digital Edition - Video

Download, then watch bonus content where you see this logo.



Publisher: All About Newport Ltd

We gratefully acknowledge the support given from advertisers and editorial contributors in the All About Magazine. Whilst every effort has been made to ensure the accuracy of all information published within this magazine, the publishers cannot accept responsibility for loss, damage or omission caused by error in the printing of an advert or editorial.

Advertisements contained within this magazine are subject to the normal terms and conditions of the company, copies of which are available on request. Advertisements are accepted on the understanding that descriptions of goods and services are fair and accurate. The Publisher does not officially endorse any advertising material included within this publication, nor do they accept liability for omissions or incorrect insertions or any consequences arising therefrom. nor can they accept liability or responsibility for any consequence arising from use of this publication. The views expressed in All About Magazine by its contributors are not necessarily those of the publisher's.

©All About Newport Ltd. All rights reserved. Neither this publication nor any part of it may be reproduced, stored in a retrieval system or transmitted in any form or by any means, electronic, mechanical, photocopying, recording or otherwise, without the prior consent of All About Newport Ltd. c/o MSA Ferndale, Suite 7, Nova House, Audley Avenue Enterprise Park, Newport, Shropshire, TF10 7DW. Registered in England and Wales. Company No. 08144530. VAT Reg. No. 190405523.

All About Magazine is printed by Precision Colour Printing Ltd, Telford.



When you have finished reading your magazine, please share it with others.



# Mellow fruitfulness...

by Mike Robin at [www.freerange-living.co.uk](http://www.freerange-living.co.uk)

Not too much to do in the organic veg patch here at the eco micro-holding (small smallholding) at the backend, especially now all the spuds have been dug – just some spring cabbage plants to put out and a few autumn-sown overwintered onion sets to go in.

Different story though in the newly established mini orchard of around forty or so fruit trees on half the paddock, and damson picking, for instance, to make gorgeous damson preserve, has been the order of the day. The damson trees were actually naturally self-sown specimens, which was a nice surprise, as though it is a damson area, the existing trees hereabouts were getting old and past it. Apparently, as many damsons as you like can be eaten without getting stomach ache, unlike plums.

Talking of plums, the Victoria plum tree which has been going longer than the rest, has chosen this year to give up the ghost, giving an unusually poor crop. Some apples have been collected as windfalls, very tasty too, and most of the rest need to be gathered in and stored on breadtrays to provide fruit into the winter. One or two sloe bushes have appeared 'naturally,' so



some sloe gin could be on the agenda. Pears seem to be in their usual patchy supply, but the peach tree in the south facing garden border did quite well this year. There are cherry trees but seldom any cherries as the birds get to them first - ah well, they've got to make a living too.

## COOKSHOP Newport



### Christmas has Arrived at Cookshop Newport

- Table favours, festive biscuits and treats, hand selected boxed chocolates
- Wooden crates and packaging for presenting your homemade treats
- Thermometers, gravy separators, basters and other essentials for stress free entertaining
- Novelty items

**Next  
Demo Day**  
Friday 6th November  
(more details in store)



**Visit us today! 64a High Street, Newport, Shropshire TF10 7BA**

*For everything you need to prepare, cook and serve fabulous food.*

[WWW.COOKSHOPNEWPORT.CO.UK](http://WWW.COOKSHOPNEWPORT.CO.UK)

01952 825800



## News in Brief

A selection of local news snippets. More news stories can be found online at [allaboutnewport.co.uk](http://allaboutnewport.co.uk)

### ***New Shrop Doc Number***

If you require urgent medical assistance, which cannot wait until your local practice is open, please call Shrop Doc's new emergency out of hours number 0333 222 6655.

### ***Vintage Tearoom***

Hart's Vintage Tearoom opened Saturday 17th October. Located in St. Mary's Street in Newport.

### ***Finance Planner***

Claire Dentith, chartered financial planner will now be at Tax Assist in Newport, on Thursday's, starting from 5th November from 2pm - 4pm. Appointments can be made for alternative times.

### ***New Ownership***

Shell's Sweets at Badderley Court, Newport is now under new ownership.

### ***Newport in Bloom***

Autumn has well and truly arrived and the baskets and planters have now been removed from the

High Street and emptied by Newport in Bloom's volunteers.

Many people clearly felt that the hanging baskets were particularly stunning this season and such positive feedback makes the hard work well worthwhile. It will not be an easy act to follow but Newport in Bloom is committed to an even better display next year, when they will be inviting the Heart of England in Bloom judges back to the town. The Committee decided not to enter the annual competition this year, due to the building sites located at every entrance to the town, but plans for 2016 are already under discussion.

The next Newport in Bloom fund raising event will be a Quiz Night at the Rugby Club on Friday 27th November at 7.30pm, and they hope that this will also be a great success. Look out for the posters, check our "Dates for your Diary..." and let's continue to support their efforts.

### ***Pride in your High Street***

On behalf of Newport's Regeneration Partnership and all the local voluntary & community sector the 'Town Team' has made two wide-ranging town centre focussed bids for funding totalling over £120,000. Telford & Wrekin Council is now assessing all bids with the outcome expected early in 2017.

### ***Stay Well this Winter***

Now's the time to get your free flu jab!

Those eligible for the free winter flu vaccination include: those aged 65 years and over • those aged six months to under 65 in clinical risk groups • pregnant women • carers • all children aged two, three and four-year-olds (on 31 August 2015) • all children of school years 1 and 2.

Contact your local GP or Pharmacist to find out if you are eligible for the free flu vaccination.

Post your local Job Vacancies online for FREE at [www.allaboutnewport.co.uk/jobs](http://www.allaboutnewport.co.uk/jobs)

## Have your say in the next issue of All About Magazine

If you wish to contribute to the next issue, please tweet, post or email your comments to:

**[editor@allaboutnewport.co.uk](mailto:editor@allaboutnewport.co.uk) by 5pm, Monday 9 November 2015**

or post your comments to All About Newport Ltd, c/o MSA Ferndale, Suite 7, Nova House, Audley Avenue Enterprise Park, Newport, Shropshire, TF10 7DW



# How Now Mrs Brown Cow (Certificate 15)

DVD: RRP £12.99

How Now Mrs Brown Cow was toured in the North of England and Ireland in 2010, but it would not be until this year that the whole UK could experience the show live in theatres.

Mrs Brown actor, Brendan O'Carroll, wrote the mega-popular comedy as stage plays prior to the stories being converted into the smash comedy TV series loved by millions.

The current show has toured across the UK since March this year and finishes in December.

The accompanying DVD allows those who saw it on stage to have a lasting keepsake - or for those who haven't seen it, enjoy the spectacle from the comfort of their own lounge.

The plot sees the run up to Christmas in the Brown household. The turkey is plucked and grandad is getting stuffed (or vice versa). Agnes Brown can't wait to see son Trevor for the first time in five years.



View the Official trailer in the Tablet Edition

Daughter Cathy returns from her trip to America with news that could upset Mammy. Crude, rude, but sure to raise a smile. **Mrs Brown is a sure-fire hit.**



## Bishops Offley Christmas Trees

*Come and choose your own tree and cut it yourselves a great family activity*

Home grown and fresh non-drop Nordman Fir along with a wide selection of other species. We also have potted and pot grown trees, stands and wreaths

Rosemount, Bishops Offley, Eccleshall, Staffordshire ST21 6ET

**Tel: 01785 280346**

email: [bishopsoffleytrees@yahoo.co.uk](mailto:bishopsoffleytrees@yahoo.co.uk) | [www.boct.co.uk](http://www.boct.co.uk)



## DISTRIBUTORS WANTED

We are looking for hardworking, reliable and honest people to deliver **All About Magazine** to our readers.

If you are looking for a **few hours work** each month with **good rates of pay**, please call...

**Karen on 07973 385 929**

## Your Local Family Butcher

Quality local produce with full traceability

- Traditional farm reared Shropshire turkeys • Turkey crowns
- Brisbourne free range geese
  - Gressingham ducks
- Shropshire reared bronze turkeys
  - Shropshire reared chickens
- Selection of locally made pork pies
  - Home made sausages
- Sausage meat • Piggy in blankets
  - Beef • Pork • Lamb
- Gammon joints • Smoked bacon
  - Home dry cured bacon

**British Sausage Week**  
2nd-7th November, 2015

Try our  
Homemade Sausages





Call in and place your order with...

### Matthews Family Butchers

01952 812356 - 7 Stafford Street, Newport



# Star Wars: Battlefront

Available on PlayStation 4; Xbox One and Microsoft Windows (£Price by platform)



View the Official trailer  
in the Tablet Edition

You might have heard of Star Wars, a little sci-fi project nurtured by George Lucas from the 1970s until he sold it to Disney in 2012 for around £4 billion.

Of course you've heard of it. Star Wars is inescapable. It is all over the news, soon to be back on the silver screen and just in time for Christmas, back on your favourite game machine too.

Star Wars: Battlefront is an impressive game played from either a first person or third person perspective.

Planets familiar to fans of the saga - including Endor, Hoth, Tatooine and Sullust - can be explored by players using a variety of vehicles, both air and land-based.

Play as either a Rebel Alliance soldier or Imperial stormtrooper. You can also embody characters from the films, such as Darth Vader, Luke Skywalker and notorious bounty hunter Boba Fett.

The game includes cooperative missions, to play on and off line, with an online multiplayer mode

allowing up to 40 players in one match.

From launch, five locations from the Star Wars universe will be available - Hoth, Tatooine, Endor, Sullust and - from the forthcoming new movie The Force Awakens - Jakku. **May the force be with you!**



## SIMPLIFY YOUR COMMUNICATIONS!

We can simplify your communications, save you time and money and help you grow your business.

We're not your everyday run-of-the-mill supplier. At Stripey Pig, we're dedicated to saving you time and money by helping you

- Exceptional service with access to the fastest network available in the UK
- Simplicity guaranteed with our award-winning customer portal

find a solution that is perfectly tailored to your individual needs. When you partner with us, we promise you only the very best:

- Great value plans and bespoke solutions to suit your individual needs
- Awesome support from our dedicated team of specialists

Stripey Pig offer effective, affordable communication solutions for:

- Fixed • Mobile • Broadband • Cloud • VoIP • IoT • MBB • Apps



**stripey pig**

ddi 01952 76 70 70  
m 07703 832 572  
e info@stripeypig.co.uk  
w www.stripeypig.co.uk



1



1 - Culinary Concepts  
London - Shotgun  
Cartridge giftware  
from £20. Orders can  
be placed in store for  
Bottle Stops, Letter  
Openers, Hip Flask and  
other items within the  
collection.

CoCo64, Newport:  
01952 929120

2 - Kitchen Aid  
Nespresso Coffee  
Machine from £309.00

Cookshop Newport:  
01952 825800

3 - Christmas Ornaments Paper Craft Kits  
with instructions to make 6 baubles £6.99

Kitty Kraft, Newport: 01952 820940

4 - Grey Robin Scarf £9.95

Daisy Chain, Newport: 01952 813584



4

*Handpicked*  
FROM THE HIGH STREET

2



3



**Click & Collect - Newport** - [www.allaboutnewport.co.uk/shops](http://www.allaboutnewport.co.uk/shops)

Safe and Secure online shopping from these local independent retailers using Click & Collect.

# New Years Eve

Join us for an eight course Gala Dinner with 'surprise' entertainment and fireworks to welcome in 2016

## Menu

Aperitifs and Canapes



Lobster, Cantaloupe Melon and Chablis Jelly



Cream of Pea and Mint Soup



Champagne Sorbet



Fillet of Staffordshire Beef Wellington with Potato Gratin & Glazed Vegetables  
Or

Supreme of Salmon served with Prawns in a Dill, Chenin Cream Sauce



Roast Vegetable Strudel



Artisan Cheeseboard with Fruits



Passionfruit Roulade



Tea Coffee & Petit Fours

**£75.00pp**

Dining commences at 7.30pm  
Entertainment Between dessert courses  
Fireworks at midnight  
Carriages at 1.00am

*30% deposit payable to book*



THE ORCHARD



128 High Street, Newport TF10 7BH  
Call: 01952 872 700  
Email: [info@orchard-dining.co.uk](mailto:info@orchard-dining.co.uk)



## CHRISTMAS AT THE ORCHARD

*The perfect place for a fine celebration!*

As Christmas approaches and the goose is hopefully getting fatter we have naturally turned our thoughts towards planning for both the business and our own family at The Orchard. Christmas is obviously the traditional time to celebrate the year's achievements with colleagues at work or to spend an evening out with those dear to you. We started the restaurant with one intention – to offer a place to dine that made you feel special and gave you a mini retreat from life for an evening with your favourite people. So with the nights rapidly closing in and the scent of mulled wine around the corner those sentiments are increasingly relevant and important.

The menu for the festive season is now available online including our Christmas Day lunch with a visit from Santa and New Year's Eve gala dinner with a touch of magic and an extra special guest appearance from live musicians (...but we can't tell you who they are or it won't be a surprise!!!)

In addition from the 1st November due to repeated requests we are going to open for luncheons and afternoon tea from 12.00 noon until 3.00pm Wednesday – Saturday. So after all the tiring Christmas shopping why not treat yourself to a little touch of luxury.

Follow us on social media to keep up to date with special deals and offers, or just to keep in touch.

We look forward to welcoming you very soon...

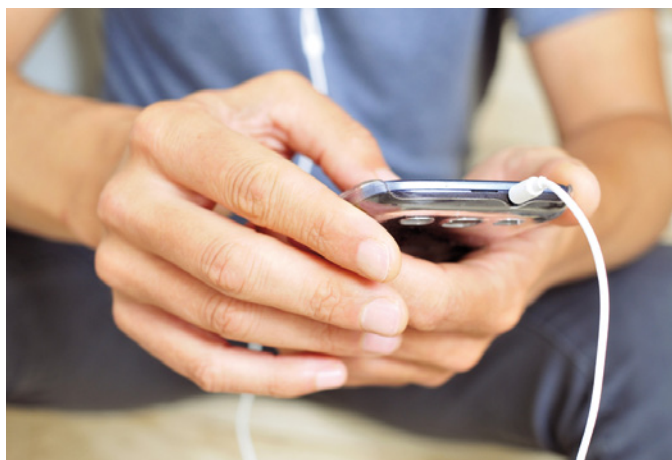
*Sarah, Peter & The Orchard team.*



# APPy Talking

Expect fireworks galore this month, but what else comes to mind when we think of bangers, rockets and sparklers? Let's take a look...

What apps could you not live without? Send your smartphone favourites to **editor@allaboutnewport.co.uk**



Madcowie

*Bangers Unlimited*

Productions

## Bangers Unlimited

*Free for Android - in-app purchases*

Car games are 10-a-penny but find a good one and you've got something great to pass a few minutes of spare time. Bangers Unlimited is a cracking little game. As the title suggests, this is not some souped-up Ferrari to speed around in, instead it is a crumpled used motor with the gruffest sounding engine this side of the M54.

Controls are simple turn left or right with the touchscreen controls. There is even a break pedal icon, but the only time you will use this is to unlodge yourself when stuck. You don't need to worry about accelerating. The engine is whirring away as soon as you select your race track.

Complete the course as quick as possible and attempt to beat the other battle-damaged cars. Brilliant fun and more than a little challenging. You'll be banging on about this one to your friends.



## Rocket Crane

*Free for Android - in-app purchases*

Now for something completely different. This unusual game is as addictive as it is infuriating. The idea sounds pretty simple. You are at the controls of a rocket with an electro-magnet that you must attach to metal containers by manoeuvring carefully into position.

Once attached, attempt to move each container to a designated target. Be careful though, because as well as having to master the controls, you must be conscious of fuel levels running short. Guiding your rocket isn't easy by any stretch of the imagination.

Get to grips with the controls and you will soon be ready to move off the first couple of levels. Things soon get tricky though with the introduction of multiple containers to move. **Give this game a go. It is sure to be a moving experience, in more than one way.**



## Sparkler Particles

*Free for Android*

Most children at some point in their life will have held a sparkler while at a firework display. It seems crazy that we ask our little darlings to stay clear of fire all year long, only to thrust a lit metal rod, with flames hissing and spitting as the white-hot torch of sparks licks at gloved little fingers.

Well, worry no more. All the fun of sparklers can be had in a multitude of apps these days. One such app, Sparkler Particles splashes an array of colourful sparks across the screen wherever you run your finger. Try writing your name, but be quick, because as soon as you touch your device, colours explode everywhere.

This might not have the drama of a real sparkler, **but the safety conscious among you will love it.**

# Little Mix - Get Weird

DVD: RRP £9.99

Little Mix have come a long way since triumphing at the 2011 final of ITV talent show, The X Factor.

Two hit albums and many top 10 singles later, the girls made a welcome return earlier this year with the release of Black Magic.

Released in May, Black Magic is the first single from their third album, Get Weird, available through Syco Music, the label owned by Simon Cowell.

Get Weird is a lively body of work, penned by Jade Thirlwall, Perrie Edwards, Leigh-Anne Pinnoch, and Jesy Nelson.

The girls have become so talented since their formation that they have even written tunes for such well known singers as Britney Spears.

The track Pretty Girls was originally written for Get Weird, but didn't make the cut.

Instead 33-year-old Britney will instead release it as a collaboration with Australian rapper Iggy Azalea.

For Little Mix though, new single Love Me Like You and



View the Official trailer  
in the Tablet Edition



*Muse*  
BRIDAL.

*Muse Bridal*  
123 High Street, Newport,  
Shropshire TF10 7BB



*Exquisite Designer Bridal Collections  
along with a boutique of beautiful  
Mother of the Bride and Groom outfits,  
special occasion wear  
and evening cocktail dresses*

*Tel: 01952 814631  
www.musebridal.co.uk*



## RVS Newport Helpline

The Newport Helpline was started in 1991 in order to help elderly local residents get to and from appointments at the (then) new Princess Royal Hospital, as well as to doctors' surgeries in the town.

Over the years, the service has widened to provide friendly and inexpensive transport to a wide range of appointments as well as help with shopping for any residents of Newport and the surrounding area who are unable to drive themselves.

The service is run entirely by volunteers, but drivers are reimbursed for their petrol costs. The telephone service operates, from volunteers' homes, every weekday, from 9:00 am until 1:00 pm, matching those who need transport with available drivers. In a typical month, Helpline drivers make about ninety journeys for around forty people, some using the service regularly each week and others using it on a one-off basis.

The Helpline urgently needs more volunteers to run its services. Could you spare a few hours a month to help with driving or answering the telephone? There is no fixed pattern for driving; it varies according to the requests received and your own availability.



Telephone volunteers usually offer one morning per month.

If you are interested in volunteering or would like more information, please call the Helpline any weekday morning on **01952 820599**.

## Give the Gift of Beauty

To Someone Special And Make Them  
Feel Pampered This Christmas

Receive 10% Off every Gift Certificate  
bought before the 30th of November 2015



Meet the Team (left to right):  
Rhiannon, Andrea and Sarah

Smallwood Lodge, Newport  
Tel: 01952 820662

InSpirit Opening Times:

Monday, Tuesday, Wednesday and Friday 9am - 5pm; Thursday 11am - 7pm; Saturday 9am - 3pm



## Cranberry and Marzipan loaf

This sponge is full of seasonal flavours, great for this time of year. Serve warm with ice cream or custard if you fancy. Hannah of Cookshop Newport has baked this in a Christmassy disposable loaf pan. “Less washing up and I think it looks lovely”.



### Method

1. Heat the oven to 180°C/350°F/Gas mark 4
2. Pop the butter and sugar in a mixing bowl and beat until light and creamy.
3. Crumble the marzipan up and add the butter mixture, beat again until smooth and creamy, I find it easier to use an electric mixer.
4. Beat the eggs in another bowl, gradually add to the butter mixture until well combined.
5. Gently stir in the ground almonds.
6. Sift the flour and baking powder into the bowl and fold in with a metal spoon. When the flour is all incorporated, carefully fold in the cranberries, when they are evenly distributed stop mixing.
7. Place your disposable loaf pan on a baking tray (no need to grease it) and spoon the mixture in. Scatter the flaked almonds over the top and bake in the oven for 35-40 minutes.
8. Lift out and leave to cool, dust with icing sugar when you're ready to serve.

### Ingredients

- 90g cranberries (defrosted if frozen & coarsely chopped)
- 75g unsalted butter, softened
- 50g caster sugar
- 150g marzipan
- 2 medium eggs
- 90g ground almonds
- 90g plain flour
- 1½ tsp baking powder
- Handful of flaked almonds
- Icing sugar for dusting



# AA Award success for local hotel

The AA has been rating and recommending Hotels for over 100 years and each year it selects the best Hotels in each rating.



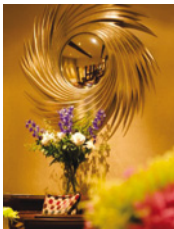
The Cushing Family receiving the Red Star award from Fiona Bruce and Simon Numphud at the Grosvenor House Hotel, London

## GOLDSTONE HALL

COUNTRY HOUSE · HOTEL · RESTAURANT



Award Winning Hotel, Restaurant and Gardens just North of Newport along



Open for lunch, afternoon tea and dinner  
[www.goldstonehall.com](http://www.goldstonehall.com)  
 01630 661202



These selected Inspectors' Choice Hotel's stand out as the highest quality in the British Isles regardless of style and are identified by Red Stars.

Local Hotel & Restaurant, Goldstone Hall, is honoured to receive this award and join this very special group.

"It is wonderful to be chosen to join the ranks of the best Hotels in the UK where you can expect more of everything, more comfort, more extras and more attention" said Proprietor John Cushing.

'Goldstone Hall which is situated in extensive grounds is a family run Hotel, it provides well equipped accommodation with lots of thoughtful extras. The Kitchen has a well-deserved reputation for good food that utilises home grown produce and a warm welcome is assured' enthused the AA Inspector.

Fresh garden produce is a key feature of Head Chef, Chris Weatherstone's dishes. Developed over 30 years Goldstone has built an enviable reputation for quality dining and has hosted many Weddings and Parties. It currently employs about 50 staff who are all local.

"It is a fantastic and highly professional effort by the Goldstone Team to have brought such acclaim to Shropshire" said John Cushing.

Call today on **01630 661202** or pop onto [www.goldstonehall.com](http://www.goldstonehall.com) to find out more information.



Black Ankle boots  
£34.95



Brown Ankle boots  
£34.95

## Beautiful boots at Daisy Chain

Here at Daisy Chain we have a great selection of boots for you to choose from this Season.

Our great value leather styles range from an on trend black leather 'Chelsea' boot for just £54.95 to classic long 'riding' style boots in black and brown in gorgeous leather for just £99!!

If you are after something a bit more practical for warmth and style then our fantastic fur lined mid length boot from Kedo is a must, with a good grip on the sole they are just right for any cold/icy weather that maybe heading our way!

Ankle boots are very popular this year too and one of our favourite styles combine practical with "a bit of bling!!" priced at £34.95 and available in black or brown they are sure to add a bit of sparkle to your winter wardrobe.

Pop in to see us for a browse down the cobbles of St Marys Street, Newport - we are always happy to help.

*Emma and Maria x*

Black Zip Boots £49.95

Tan Stretch Boots  
£54.95



DAISY CHAIN

Follow us on Facebook for our latest news & offers.



8 St Marys Street, Newport,  
Shropshire TF10 7AB.

Telephone: 01952 813584



*Handpicked*  
FROM THE HIGH STREET

1



1 - Designer Dress by Cabotine  
£145.00  
Muse Bridal, Newport: 01952 814631

2



2 - Silver Cheval Mirror  
(free standing) £99.00  
Newport Beds, Newport: 01952 820820

3 - Tan Leather Gloves £19.95  
Daisy Chain, Newport:  
01952 813584

4 - Selection Box of Socks £20.00  
Lotties in Newport, Newport:  
01952 825825

4



3



# Lottie's

Women's & Men's Clothing & Accessories

[www.lottiesfashion.co.uk](http://www.lottiesfashion.co.uk)



Cossington Navy Coat  
£169

We have the perfect autumn wardrobe now in stock, including fabulous leather boots to compliment any outfit. With the festive period looming we have a fantastic range of stocking fillers for your loved ones not to mention that special gift for all your friends and family. Lottie's offers a warm friendly service, with complimentary gift wrapping and a little inspiration if needed.

We look forward to seeing you.

Lots of love

*Lottie x*

Joules fur headband  
£24.95



Joules Knightsbridge  
Croc Finish Bag £169



Seasalt Bunting Dress  
£69.95



Joules Tessa Poncho  
£79.95



Joules tan boots  
£120.00



Avoca Arap  
£125



View in Lottie's store - 6a St Mary's Street, Newport. TF10 7AB. 01952 825 825

Joules

AVOCA

WHITE  
STUFF

seasalt



Ness

R.M. Williams  
THE BOYS IN SUITCASE

POWDER



1



1 - Wooden tablet/cookbook stands (suitable for mini and standard sized tablets) £24.99

Cookshop Newport: 01952 825800

2



2 - MiTorch - The handy handbag torch £4.95 (8 assorted designs)

The Courtyard, Newport: 01952 813384

3



3 - Aga Mugs £11.99 each, Iconic Stripe Chefs Pad (Made in England) £13.00

Shropshire Heat, Newport: 01952 811443

4

4 - Children's Masks for Decorating. Suitable age 3+ each pack contains 16 masks £3.50 per pack

- Chubby Stumps £3.79
- Wax Crayons £1.70

Kitty Kraft, Newport: 01952 820940



## Community choir celebrate

Sing4Fun, a community style choir in Newport, run by Heather and Dale Kynaston, recently celebrated it's 1 year anniversary with a party.

The mixed voice choir started on September the 11th 2014 and now has a steady membership who meet every Thursday, at the Burton Borough School from 7.45pm to 9.30pm and enjoy each others company whilst singing rock and pop songs from today and times gone by.

The evening at the newly refurbished Burton Borough School was attended by 60 of the choir members and some family and friends. Entertainment was provided by "The Travellers", Barbershop quartet and by Dale himself.

Earlier in the year, the choir managed to raise over £200 when they sang and fronted a tombola stall at the Newport carnival. The decision on which charity to make the donation to was easy, as one of the choir members, Helen Watts, has a degenerative sight condition, so, "Guide Dogs for the Blind" was the obvious choice. Cyril Plant and Pat Grainger from Guide Dogs for the Blind, came along with Tilly (the Guide Dog in training) and gave a short talk about



the charity and how the donation will be used.

Newport's Nova FM were also in attendance to interview several members during the evening and will be broadcasting the interviews in the next week or two.

## Handmade in Britain

World class British stoves from Newport based [ShropshireHeat.co.uk](http://ShropshireHeat.co.uk)

"Handmade In Britain " and a "warm family welcome" is why we are drawn to one of our favourite stove manufacturers, Town and Country fires. The company was founded in 1977 by the Thurlow family as a way to diversify from farming. The business has grown over the years and now employs over 20 local men and women in the Yorkshire town of Pickering, where they develop and manufacture all their stoves.

The process of making their stoves starts with a flat piece of steel, and from the moment the steel enters the factory, that's when the journey begins. From laser cutting, to precision bending, to welding, each stage of stove building takes a huge amount of time, effort and pride to make, assemble and forward to their customers. With over 80% efficiency on some models, these truly are world class stoves.

This season has seen the development of 2 new

models with the options of brass or stainless steel fittings or log stores.

The Saltburn is a great addition to the range. It is a modern looking 5kw stove with a retro feel, built with highly advanced technology.

The Langdale is a new innovative designed stove which is very controllable with a great clean burn system. The 2 side glass panels allow the flame to be viewed from 3 sides.

We have a selection of **Town & Country** fires on display, plus a working Little Thurlow so please pop in.



Langdale 7.5kw stove (inset)

COMMERCIAL FEATURE



**01952 811443**

Find us on  
**Facebook**





# The **COURTYARD**

This year our Christmas stock has been chosen to offer customers the most exciting and inspiring collection to date.

The past few weeks have seen great activity with our shelves and walls now restocked with dazzling decorations, beautiful Christmas cards and useful imaginative gift ideas for family and friends, all at very affordable prices.

## New arrivals this month include ...

- \* British made candles and serviettes
- \* Heavy duty log baskets
- \* Stunning Christmas decorations and seasonal door wreaths by Gisela Graham
- \* Reconstituted stone garden ornaments
- \* Dunoon mugs, photograph frames, gifts for men and hundreds of stocking fillers for all ages.



Call in and Browse  
- A Warm  
Welcome Awaits



The Courtyard - Furnishings and Gifts for the Home & Garden  
[www.thecourtyardgiftshop.co.uk](http://www.thecourtyardgiftshop.co.uk)

T: 01952 813384 E: [ggratton@btinternet.com](mailto:ggratton@btinternet.com)

Church House, 93a High Street, Newport, Shropshire TF10 7AY

Monday - Saturday 10am - 5pm - Free parking available throughout Newport

# Treat Yourself Tuesdays

Homemade food at it's local best,  
with a mouth watering...

# 50% off

all prices  
shown below

for over 60s between  
12noon - 3pm

- Homemade soup served with half a sandwich, choose from: Cheese & Red Onion, Ham & Tomato or Chicken & Bacon **£5.50**
- Choice of Pork Sausage or a Cheese Omlette served with Chips & Beans **£3.95**
- Jacket Potato served with Salad and a choice of filling: Cheese & Beans, Tuna Sweetcorn Mayonaise or Beef Chilli **£3.95**
- Beer Battered Fish served with Chips and Mushy Peas **£7.95**
- Homemade Beef Chilli served with Rice **£8.00**
- Cheese & Red Onion Toasted Ciabatta served with Salad and Tortilla Chips **£3.95**
- Ham, Tomato & Cheese Toasted Ciabatta served with Salad and Tortilla Chips **£3.95**
- Tuna Sweetcorn Mayonaise Toasted Ciabatta served with Salad & Tortilla Chips **£3.95**



Breakfasts  
Served  
**ALL DAY**  
from 10am

## THE BARLEY

sixty two  
high street

### FOOD SERVED

Monday - Saturday 10am - 4pm  
Sunday - Closed

(Bookings required for Parties). Open late nights  
till 2am Friday & Saturday

**T: 01952 820810**

62 High Street, Newport. TF10 7AQ

• Live Music every last Friday of the month • Live Sport • Pool Table • FREE Wi-Fi

[www.thebarleynewport.co.uk](http://www.thebarleynewport.co.uk)



# I will do it tomorrow...

But tomorrow never comes. That seems to be the case when we are asked have we made a Will? It is a protective mechanism to try and not think about the inevitable for all of us.

Making a Will is one of the most important purchases we will ever make in life.

Making sure your life time hard work goes to the people you love and cherish. This might not happen if you die without making a Will.

Alistair of ACW Wills and Estates Limited says "As a qualified member of the Institute of Professional Willwriters I have established a business in Newport to give local residents the support of a will writing professional."

Having a Will that makes sure that your wishes are achieved and that can help you reduce any Inheritance Tax liabilities is crucial.

ACW wills can also help draw up Lasting Power of Attorney that will allow your affairs to be conducted by a friend or family member if you are mentally incapacitated at some point in the future.

For friendly guidance and advice in plain English



contact **Alistair** at ACW Wills and Estates Limited on **07768 643225** or 01952 670534 or email: [alistair@acwwillsandestates.co.uk](mailto:alistair@acwwillsandestates.co.uk)

## If anything happened to you tomorrow ...

- Would you be happy for your family to wait to receive your estate?
- Would you want your children to be in Local Authority care?
- Would you like the people to receive your estate to be decided by the Government?
- Would you be happy for your house to be sold for Nursing Home fees?

**If the answer is NO to these questions, then you either need to make or review your will**

Contact Alistair at ACW Wills and Estates Limited on **07768 643225** or **01952 670534**

email: [alistair@acwwillsandestates.co.uk](mailto:alistair@acwwillsandestates.co.uk)



We will offer you friendly guidance and advice in plain English.

Here to help you and your family.



Compliant with the IPW Code of Practice



## NEWPORT BEDS are proud to announce the arrival of Hypnos Beds to their High Street showroom.

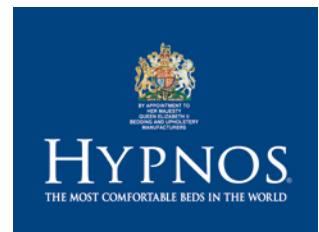
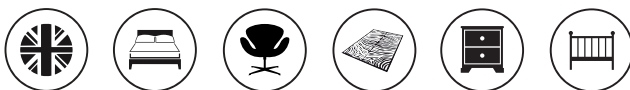
We are a designated stockist for the nbf award winner 2014-2015 Hypnos whom have been making bespoke, hand crafted beds to measure since Edwardian day's.

These luxury mattresses and designer beds can be found in the finest of homes, yachts, palaces and hotels. Lenny Henry advertises Hypnos for the Premier Inns.

With over 100 years experience, Hypnos' philosophy focuses on the Pursuit Of Perfection and the delivery of a Deep, Energising Nights Sleep, helping to fulfil dreams for a healthy life.

Combining pressure-relieving pocket springs and layers of the finest natural materials with Royally Approved craftsmanship ensure Hypnos earns its reputation for making The most comfortable beds in the world.

**COME TRY BEFORE YOU BUY**



# NEWPORT BEDS

79 High Street, Newport Shropshire

Telephone: 01952 820 820

visit us online at: [www.carpetloomnewportbeds.co.uk](http://www.carpetloomnewportbeds.co.uk)

# NB



## A unique Christmas shopping experience at Adams'

An increasingly popular local Christmas Shopping evening is being held once again this year thanks to the Adams' Grammar School Society, and everyone is welcome!

Join us on the evening of **Wednesday 18th November**, when the School's large Sports Hall will be packed with stalls, with local traders and businesses offering lots of lovely unique gifts and stocking fillers for Christmas. A special café on the night will give you the chance to rest your feet while having a proper catch-up with friends over a glass of wine or a cup of tea and a cake or two! There will even be some live musical performances from the pupils themselves!

Make sure you don't miss out by marking the date in your calendar now and telling your friends and family - Wednesday 18th November 7pm to 9.30pm. It's a lovely social event and a great opportunity to support some wonderful local traders and your local school too. Admission is £3 with free entry for under 18s accompanied by an adult.



Further information:  
Sam Baker at [agss@hotmail.co.uk](mailto:agss@hotmail.co.uk)

# ACCOUNTANTS FOR YOUR BUSINESS

TaxAssist Accountants are experts in supporting owner-managed businesses. We can help with:

- Limited Company Accounts and Tax
- Sole Trader Accounts and Tax
- Partnership Accounts and Tax
- Bookkeeping and VAT
- Payroll and Pensions Admin
- CIS
- Company formations and start-up advice
- Cloud Accounting
- ... and much more.



**01952 897077**  
[www.taxassist.co.uk/newport-shropshire](http://www.taxassist.co.uk/newport-shropshire)

## Newport in bloom

Autumn has well and truly arrived and the baskets and planters have now been removed from the High Street and emptied by Newport in Bloom's volunteers.

The group started fundraising for the spring and summer planting with their open gardens event ("Through the Garden Gate") in July, and the committee was delighted that their High Street collection earlier this month raised £300. They would like to thank the local shoppers for their generosity and positive comments about the planting in town this summer.

Many people clearly felt that the hanging baskets were particularly stunning this season and such positive feedback makes the hard work well worthwhile. It will not be an easy act to follow but Newport in Bloom is committed to an even better display next year, when they will be inviting the Heart of England in Bloom judges back to the town. The Committee decided not to enter the annual competition this year, due to the building sites located at every entrance to the town, but plans for 2016 are already under discussion.

The next Newport in Bloom fund raising event will



be a Quiz Night at the Rugby Club on Friday 27th November at 7.30pm, and they hope that this will also be a great success. Look out for the posters, check "Dates for your Diary..." in your copy of All About magazine or online and let's continue to support their efforts.

# GASP CONSTRUCTION

ALL BUILDING WORK UNDERTAKEN

- 30 Years Experience
- Competitive Rates
- Extensions
- Renovation Work
- Brick Work
- Ground Work
- Roofing and Tiling
- Repointing
- Chimney Repairs, Dressing
- Flat Roofs
- uPVC Facias

Call for your **FREE Quotation**



**GASP**  
CONSTRUCTION

Call: 01952 606785, 07964 817678 or 07526 529055

Visit us online at: [www.gaspgroundworks.com](http://www.gaspgroundworks.com)



# Traditional Home Cooked Pub Food

BOOK NOW

01952 551133

## TWO FOR TEN TUESDAYS 2 COURSES £10

Every Tuesday throughout October  
and November

6pm - 8pm (last orders 7.45 pm)

Selected Menu  
Booking Recommended!



### TRADITIONAL SUNDAY LUNCH

- 3 Courses £11.95 • 2 Courses £9.95
- 1 Course £7.95

We're told it's "One of the best Sunday lunches around", so come and find out for yourself. Served from 12 noon.

### SERVING DAILY SPECIALS SUCH AS...

- Homemade Braised Steak £9.95
- Homemade Lamb Tagine £10.95
- The Ever Popular Faggots & Mash £8.50
- Homemade Beef, Vegetable & Ale Pie £9.95

### FABULOUS SELECTION OF HOMEMADE DESSERTS SUCH AS...

- Rhubarb Crumble • Bread & Butter Pudding
- Treacle Sponge • Traditional Oven-baked Rice Pudding • Jam Tartlet - at just £4.50 each



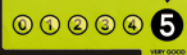
### Sambrook, Newport TF10 8AP

Monday\* 5pm-11pm; Tues, Thurs & Fri 12noon-2pm, 5pm-11pm;  
Sat & Sun 12noon-11pm (Sun evenings food - Bookings only)

Discover more at: [www.threehorseshoessambrook.co.uk](http://www.threehorseshoessambrook.co.uk)



FOOD HYGIENE RATING



\*Pub open Monday's but not serving food.

# Agriculture really matters

It plays a vital role in everyone's life, without it our very survival would be threatened.

Today's farms are complex businesses providing high quality, affordable food in a sustainable manner to our tables.

At the heart of food production is the agricultural engineer. Agricultural engineering is an amalgamation of mechanical, civil, electrical and electronic engineering that also embraces environmental and conservation work, soil and water management and the forestry, leisure and recreation industry. Agricultural engineers design and create new products for every point of the food supply industry from the field to your plate. They are also involved in a wide variety of field engineering topics from dealing with challenges such as soil erosion, irrigation and drainage, protecting and processing crops and environmental control to designing electronic systems to manage conditions inside buildings used



to house livestock and store crops.

The machinery and equipment manufacturers require engineers of the highest calibre with the right skills to deal with structures, mechanisms, control systems, hydraulics and electronics as well as having an interest and appreciation of farming systems and other relevant industry sectors.

The Wrekin branch of the **Institution of Agricultural Engineers** holds monthly open meetings that are free to attend in the Agricultural Engineering Innovation Centre lecture theatre at Harper Adams University. Call Simon Cooper on **01952 815261** for details.

The next meeting on **Monday 9 November 2015**, 19:30 entitled: Efficient Water Use & Irrigation Systems Development. **Speaker: Anthony Hopkins**, Wroot Water & Jane Whitehead of the Environment Agency.

## Lily's Secret Vintage Tearoom

Join us for a **Magical Morning** at our annual

### Breakfast with Santa

.....

Enjoy the festive decorations and music at the tearooms accompanied by a choice of hot plated breakfast, toast and cereal or a bacon and sausage sandwich.

Once you are seated Santa will join us and present each child with a gift wrapped gift. Choose from;

- **Sunday 6th December • Saturday 12th December**
- **Monday 21st December or,**
- **Wednesday 23rd December**

All 9.30 - 11.30am £7.50 per person.  
Advance tickets only.

**TO BUY TICKETS CONTACT LILY'S ON  
07964 038546**

or pop into the tearooms any day before 3.30pm

**Lily's Secret Vintage Tearoom: Swan Pit Nursery,  
Newport Road, Gnosall ST20 0EE**

- 6th Nov 'Craft with Ruth' monthly craft club.
- 7th Nov Felting with Ruth Wright Designs.
- 8th Nov Silver Clay Jewellery with Lori Ridgway.
- 12th Nov Mental Health Awareness Coffee Morning and Presentation.
- 14th Nov Adults Christmas Illustration with Sallie Humphreys.
- 15th Nov Jewellery Making with Angela Smith Jewellery.
- 22nd Nov Festive Flower Arranging with Jassmine Roberts.
- 28th Nov Felted Angel Workshop with Ruth Wright Designs.
- 4th Dec 'Craft with Ruth' Monthly Craft Club.
- 5th Dec Christmas Illustration For Adults with Sallie Humphreys.
- 12th Dec Felted Christmas Decorations with Ruth Wright Designs.
- 13th Dec Exclusively Handmade Silver Jewellery Workshop with Lori Ridgway.
- Christmas Wreath Making with Jassmine Roberts.
- 19th Dec Children's Illustration with Sallie Humphreys.
- 20th Dec Festive Table Flower Arrangement with Jassmine Roberts.

Closed from 12 o'Clock 24th December until 10 o'Clock  
18th January 2016. Pre booked Advanced tickets for events only.

For further info, costs & availability contact Lily's on 07964 038546 or  
email [s444rre@gmail.com](mailto:s444rre@gmail.com) or see our Facebook page  
[www.facebook.com/lilysvintagetearoomnewport](http://www.facebook.com/lilysvintagetearoomnewport)



# ICE VAPOUR

## It's Cooler to Vape

ELECTRONIC CIGARETTES

# Quit Smoking Start Vaping

from Just ... **£19.99**

\* 3 Bottles for £10 on Vampire Vape      \* Juice for everyone from Starters to Cloud Chasers!

Ice Vapour Newport 01952 878736

60 Upper Bar TF10 7EJ

(pictured right - Located next to Railway Tavern)

Ice Vapour Woodside 01952 872400

Unit 3 Park Lane, Woodside TF7 5FH



# Handpicked Christmas Gifts

This Christmas find great ideas for friends, family and loved ones from the independent retailers of Newport. These are just a few of the wonderful gifts on offer this Christmas. Discover more, next time you're in town.



1



2



3



4



5



1 - Heart shaped reclaimed Cornish Slate Clock £50

*The Home & Decor Shop, Newport: 01952 273436*

2 - Gift Cards available: £5, £10, £20 and £50

*Newport Tackle & Country, Newport: 01952 810832*

3 - AutoGlym Perfect Bodywork Collection £19.99

*AC Automotive, Newport: 01952 820247*

4 - Poo-Pourri. Ladies, use to spray the loo before a No.2 and no-one will ever have a clue £6

*Moolace, Newport: 01952 872239*

5 - Mix and Match Christmas Needlecraft Gift Sets.

Items start from £1

*ZigZags, Newport: 01952 814962*

6 - Red Poppy Top £17.99 -

Fat Giraffe Handbag £23.99

*Tops & Bottoms, Newport: 01952 270223*

7 - Recommend A Friend Gift Vouchers:

£5, £10, £20 or £50 all values available

*Bouhey House Hair & Beauty Salon, Newport: 01952 813487*

8 - Blooming Brollies - More designs

available £21- £29

*Appleby & Shaw, Newport: 07528 640534*

6



7



8





## Meeting the people behind AutoTech Performance

Having left school in 1989 Leigh Delacoe joined the British Army as a 16 year old Junior Leader. His chosen trade was as a Vehicle Technician in the RAOC.

Once turned 17 he passed his driving licence, which allowed him to drive and maintain a vast selection of military vehicles over his 23 year military career.

In 1991 Leigh decided to re-trade and become a military Staff Clerk. Later that year, AGC was formed and Leigh was transferred.

During his military career Leigh worked in various locations including Germany, Poland, Belgium, Cyprus and Kenya.

Whilst he has spent most of his military career in Germany he also served in Northern Ireland, where he spent 2 years working with Weapons Intelligence based in Londonderry.

This role required his team to be on call 24/7 and react to any incident that would arise in the province. The largest of these incidents being the well publicised Omagh Bombing in August 1998.

Leigh also deployed for over 4 years of his service on

Operations in the Balkans, Iraq and most recently 3 tours of Afghanistan.

As part of the AGC (SPS) Leigh worked in some varied roles including Workshop Clerk, Senior Sub Unit Clerk, Discipline Sergeant, Brigade Chief Clerk and his final role in 2012 as the Unit Systems Coordinator for 22 Signal Regiment based in Stafford.

On locating back to UK and Telford (in 2012), Leigh started to use **Autotech Performance** for his BMW after hearing about Peter via an Internet search.

"I instantly liked the way he spoke to customers and gave them his honest/professional and expert advice" says Leigh. Peter was looking at expanding the team and employing a new member of staff in administration. **A year and a half later and the rest as they say is history.**





*Call us today on 01952 22 88 22 to book your car for a performance upgrade or regular service. Courtesy cars available.*



*Our BMW Autologic Diagnostics technology, along with our expertise, allows us to confidently undertake any service and repair work required and to specialise without having to involve the dealer.*



*Whatever you drive, BMW to Aston Martin, here at Autotech Performance in Telford, we have the expertise required to carry out a complete service of your car to first class standard.*

**Autotech Performance**  
 Unit H, Horton Enterprise Park,  
 Hortonwood 50, Telford, Shropshire. TF1 7GZ  
 01952 228822  
 e: [mail@autotechperformance.co.uk](mailto:mail@autotechperformance.co.uk)

**AUTOTECH**  
 PERFORMANCE

*Opening Times: Monday - Friday: 8:30am - 6:00pm Saturday: By Appointment Only Sunday: Closed*

[www.autotechperformance.co.uk](http://www.autotechperformance.co.uk)



# Poppy People

Each year, in early November some 30,000 Legion volunteers take to the streets with poppies and collecting boxes, raising millions of pounds for the Poppy Appeal.

The money collected at this time and from numerous other fundraising activities throughout the year, goes to providing help and support to serving and ex-Service men and women and their dependants.

## Poppy People

We always need new volunteers - Poppy People - to assist with Poppy Appeal collecting in Shropshire.

Without volunteer collectors out there on the streets, without appeal organisers planning the collections, this great cause - that helps thousands of ex-Service men and women every year - would grind to a halt.

And we urgently need to recruit more people as many of our current volunteers are retiring from active duty. Add to this the ever increasing demand on the Legion's services and you can see we need your help more than ever.

For more details please contact our Community Fundraiser - [pwhalley@britishlegion.org.uk](mailto:pwhalley@britishlegion.org.uk)



When you see the 'Poppy People' please take the opportunity to donate generously. Thank you.



## More Than Just Good Advice

- Agricultural Law
- Children & Care Proceedings
- Commercial Property
- Company & Business Law
- Criminal Representation
- Employment Law
- Family Proceedings
- House Purchase & Sale
- Private & Commercial Litigation
- Mental Health
- Prison Law
- Wills, Probate & Trusts



Shrewsbury 01743 285 888  
Telford 01952 297 979  
Newport 01952 810 307  
Bridgnorth 01746 768 748  
[www.terry-jones.co.uk](http://www.terry-jones.co.uk)



## Smallwood Lodge Tea Room & Restaurant

### Looking for something different to give as a Gift?

Why not call in and purchase vouchers for:

- Champagne breakfast for 2
- Champagne Tea for 2 • Afternoon Tea for 2 or £5 and £10 Gift Vouchers

Upper Bar, Newport, Shropshire, TF10 7AP

**01952 813606**



- Winter Opening Hours • Monday-Friday 10am -4pm,  
Saturday 9am -4.30pm - Closed Sunday





## HCI Systems provide Electrical Wiring Systems for Road, Race, Defence and Agricultural Vehicles and now can provide Scorpion Tracking solutions too!

**Hello!** As this is our first advert, I thought I should introduce ourselves to you and let you know what we get up to on the **Springfields Industrial Estate, in Newport.**

Sarah and I started HCI Systems three years ago after 20 years of working on Helicopters, two F1 One teams and other electrical system specialists in Defence and other areas of Motorsport.

Working at HCI is certainly more varied than working within an F1 team, this year we have wired many FIA World Rallycross supercars, two of which you may have seen being driven by Jenson Button and David Coulthard before the Russian F1 race and also being driven by James May of Top Gear at the beginning of the year.

We have also provided wiring to F1 teams, a dragster VW Split screen Camper, Shane Lynch from Boyzone's Drift car, the Vuhl a Mexican track day car

and worked on some beautiful classic restorations, a Capri GR2 Original Race car and 1969 Alfa Romeo GT Junior to name just a few!

One of our more recent projects has resulted in us becoming Scorpion Tracker installers. This product is the best on the market, Thatcham Cat 5 approved and provides 24/7 tracking for your vehicle should it become stolen.

Supercar, classic car or even a tractor, Scorpion can track it! Please contact us to discuss your requirements - from simple wiring repairs or diagnostic work to rewiring your classic, we can help!

**We look forward to hearing from you soon.**



**Electrical / Electronic Wiring Systems Specialists**  
DEFENCE - AUTOSPORT - AUTOMOTIVE - AGRICULTURE

HCI Systems Limited, Unit 2 Springfield Industrial Estate,  
Newport, Shropshire, TF10 7NB:

Email: [info@hci-s.com](mailto:info@hci-s.com) or Phone: +44 (0) 1952 825002





## Estate Agents - Surveyors - Valuers

The Estate Agents experienced in selling residential properties in the Newport area for almost 50 years

### *The Firs, Sutton, Near Newport - £650,000 region*

The Firs is a substantially extended and beautifully refurbished four bedroom family home, set in the rural hamlet of Sutton, with fine views over the Shropshire/Staffordshire border. The house offers exceptionally well appointed accommodation over two floors, being warm and welcoming and practically designed and renovated, with the owners introducing character and charm with top of the range bespoke fitments throughout, tasteful decorative touches and statement light fittings.



### *Kingston Barn, Forton - £395,000 region*

Kingston Barn is a deceptively spacious and light, four bedroomed sandstone barn conversion, set in a select, secluded development of five barns, in the rural village of Forton, with views to the rear, over neighbouring countryside. This family home retains a wealth of character features including exposed beams, solid oak floors and latch and brace style doors. The solid oak kitchen includes an AGA, available by separate negotiation.



**Tempertons**  
01952 812519

23-25 High Street,  
Newport TF10 7AT

newport@tempertons.co.uk | www.tempertons.co.uk

Call us today for a  
free pre-sale no  
obligation valuation





## MEESON BARN DEVELOPMENT OPPORTUNITY



These fantastic barns occupy a truly stunning rural setting among mature trees and open farmland. Dating from the 17th Century with a Wealth of Character and many attractive features including a rose shaped 'bulls-eye' window.

There are three exquisite and traditional barns where planning permission was granted for conversion to six dwellings. The opportunity exists to create a mix of two, three or four bedroom properties. The internal area is approx. 12,000ft<sup>2</sup>.

Located on the edge of a picturesque village with countryside views, close to the popular town of Newport and convenient for main road links.

**DAVIES  
WHITE  
PERRY**  
ESTABLISHED 1806

**Price On Application**

ESTATE AGENTS • AUCTIONEERS VALUERS  
NEWPORT & SHIFNAL

**DAVIES  
WHITE  
PERRY**

ESTABLISHED 1806

ESTATE AGENTS  
AUCTIONEERS  
VALUERS

NEWPORT & SHIFNAL

Practising in the counties of Shropshire and Staffordshire for over 200 years, specialising in **SALES** of all forms of town and country property, **LETTING & PROPERTY MANAGEMENT**, Valuations for Insurance, Probate, Furniture, etc.

Contact us for **FREE** professional advice **WITHOUT OBLIGATION**.



**45/47 High Street, Newport 01952 811003**

[newport@davieswhiteperry.co.uk](mailto:newport@davieswhiteperry.co.uk)

**Market Place, Shifnal 01952 460523**

[shifnal@davieswhiteperry.co.uk](mailto:shifnal@davieswhiteperry.co.uk)

[www.davieswhiteperry.co.uk](http://www.davieswhiteperry.co.uk)

[www.facebook.com/davieswhiteandperry](https://www.facebook.com/davieswhiteandperry)

[www.twitter.com/davieswp](https://www.twitter.com/davieswp)

# COMPLETE HOME REMOVALS

The only removals company in Telford to be members of 'The Guild of Master Craftsmen' and 'Moved Assured'

We are a small *family run business* and we deliver a professional removal to the highest standards. We ensure our customers are 100% happy with the work we do, and offer excellent value for money.

*Our Services include...*

- Nationwide Service
- Professional Home Packing Service
- Fully Trained, Uniformed Staff
- Storage
- Piano Moves
- Packing Materials
- Commercial Moves
- Porter Hire
- Removals Service 7 Days a Week

*Call us today to get your Free Quote*

**JAYS REMOVALS &  
STORAGE LTD**

YOUR HOME, SAFE IN OUR HANDS

Unit 26, Horton Court, Hortonwood 50, Telford TF1 7GY



Find us on Facebook or visit us at:

[www.JaysRemovalsandStorage.com](http://www.JaysRemovalsandStorage.com)

Telford: 01952 289118 | Wolverhampton: 01902 504300 | Shrewsbury: 01743 818706

## Innovative Design. Bespoke Solutions. Affordable Prices.

### *Why compromise on your new kitchen?*

With a huge array of styles to suit all tastes and budgets that range from £5000 to £25,000, we design and install bespoke kitchens. made-to-measure and designed with you in mind.

If you are looking for a kitchen that is as individual as you are, will stand the test of time and that offers excellent value for money, it might be a good idea to Indulge.

**Call to find out more:**

**01952 354615**

[www.indulgeinteriors.co.uk](http://www.indulgeinteriors.co.uk)



**INDULGE**  
*interiors*

**KITCHEN  
BEDROOM  
BATHROOM  
HOME OFFICE**

## Can you Spot the 6 Differences?

No prizes, just for fun. Answers on Page 66.







## Motor-Racing Star at Adams'

A motor-racing star of the future has joined Newport's Adams' Grammar School. 11 year-old Ross Turner has ambitions to be a MotoGP rider.

Ross started riding motorcycles at the age of 2 and by his 5th birthday he'd decided he wanted to be a motorcycle racer. After crafting his skills in the British Minimoto and British Mini GP championships Ross made the move to the Moto4 World Championships in 2014.

Ross says: "I remember watching a minimoto race when I was five and it was then that I decided I really wanted to be a motorcycle racer. I have to keep really fit for the sport and so I cycle around 5 miles every day as well as boxing training twice a week."

Ross' father Simon Turner, who helps organise his son's busy schedule commented: "The future is looking bright; Ross now has full sponsorship for all his rider equipment through Feridax."

Headmaster Gary Hickey commented: "We're very pleased to have Ross at Adams'. He has already shown great commitment and dedication to his sport and to his academic studies and we're really looking forward to watching his progress in the next couple of years. Having spoken at length to Ross and his father it is clear to me that racing at the level Ross does requires hard-work and study off the bike as well as good communication skills to enable him to explain how the bike feels to his mechanics."

# PJ BLINDS

YOUR LOCAL BLIND SPECIALIST

FESTIVE SEASON OFFERS

**BUY 2  
GET 1  
FREE**

ON ALL VERTIVCAL, VENETIAN, WOODEN  
VENETIAN AND ROLLER BLINDS



Also Extra Seasonal Discounts on Perfect Fit,  
Romans and Pleated Blinds

**ORDER BY 1ST DECEMBER**

for Fitting before Christmas



Call now for an  
appointment to see  
our **latest stunning**  
range of fabrics for  
Curtains, Romans  
and Soft Furnishings

*PJ Blinds are a local family business  
with more than 16 years experience*

**CALL US TODAY ON  
01952 541657**

for a friendly **FREE** no obligation quote

Visit: [www.pjblindstelford.co.uk](http://www.pjblindstelford.co.uk)

All quoted prices include measuring, fitting and VAT. \*T&Cs apply

# Invisalign clear braces

Wycherley's dental practice open day **Saturday 14th November**

By Dr Ashok Jakhu



## Braces

- Requires brackets and wires
- Wires can poke and irritate mouth
- Brushing and flossing require more effort
- Many food restrictions

## Invisalign

- Clear aligners are virtually invisible
- Smooth comfortable plastic aligners
- Aligners are removable for easy cleaning
- Eat whatever you want

**Are you one of the millions of adults in need of adult braces who are unhappy, self-conscious or even embarrassed of your smile?**

Many adults spend their entire lives covering their mouths when they laugh, smile or talk. They rule out braces because they do not want to wear adult metal braces for years or they are concerned that other corrective teeth straightening procedures could be too invasive or too expensive. Invisalign clear braces are designed to treat a wide range of straightening issues, from minor tooth movements to more complex cases.

We are pleased to announce as one of Shropshire's largest providers of Invisalign clear braces we have been asked to hold an open day on the clear brace system.

We will be offering up to **£500 off the braces, FREE teeth whitening and 0% finance up to 12 months** if required on **this day only.**

The open day will give you the chance to book in for a free Invisalign consultation with myself and our local Invisalign representative. At this appointment we can discuss the different Invisalign treatment options with you and show you, with my own animation what can be achieved. The representative and I have both had Invisalign and are happy to answer any questions you may have on the day.

## What is Invisalign?



Invisalign can be worn simply and easily and fit into your daily routine without any fuss or embarrassment. There are no metal wires or brackets, so no need to worry about mouth irritations as the aligners are comfortable to wear and can be easily removed for eating, drinking, brushing and flossing as normal.



Your treatment consists of a series of nearly invisible, removable aligners that you change every two weeks for the next set of aligners. Each aligner is individually manufactured for your teeth, and your teeth only. As you replace each aligner, your teeth will move – little by little, week by week – until they have straightened to the final position.

You get to see a virtual 3D treatment plan (ClinCheck® treatment plan). This shows the series of movements your teeth will go through over the course of the treatment allowing you to see upfront what your teeth are expected to look like at the end of the treatment.

From the results of the ClinCheck treatment plan, your custom-made, clear aligners are produced especially for you.

**Invisalign aligners are nearly invisible.** No one may even notice that you're wearing these virtually invisible aligners, making Invisalign a seamless fit with your lifestyle and day-to-day interactions with others.



Invisalign aligners are removable giving you the flexibility to eat and drink what you want during treatment by simply removing the aligners. And you can also remove the aligners to brush and floss as you normally would for fresh breath and to maintain good oral hygiene.

Please call the practice on **01952 459459** or email [reception@wycherleysdentalpractice.co.uk](mailto:reception@wycherleysdentalpractice.co.uk) to book in for your free consultation or for more information on our other brace system, **Six Months Smile**.

## Dental and Cosmetic Treatments



- Comprehensive new patient examination using digital radiographs
- Emergency, late night and weekend appointments
- IV sedation available for anxious and dental phobic patients
- Cutting edge equipment and facilities to aid diagnosis
- Trained in cosmetic dentistry and facial aesthetics
- A range of payment plans for all the family, and interest-free finance
- Teeth whitening and Cosmetic braces
- Dental Implants
- CEREC One-Visit crowns



**WYCHERLEY'S**  
DENTAL PRACTICE

Principle Dentist Dr Ashok Jakhu

Wycherley's Dental Practice, 49 High Street,  
Newport TF10 7AT | Tel: 01952 459459

[info@wycherleysdentalpractice.co.uk](mailto:info@wycherleysdentalpractice.co.uk)  
[www.wycherleysdentalpractice.co.uk](http://www.wycherleysdentalpractice.co.uk)



# Stuck for ideas this Christmas?



**£5, £10, £20**  
Gift Vouchers Available

Spectacle Desk Caddy	£5.85
Microfibre Christmas Cleaning Cloth	£4.99
Christmas Antibacterial Cleaning Spray	£3.99
Spectacle Accessories Gift Bag (spray, cloth & screwdriver)	£5.50
Sports Nose or Dinosaur Glasses Holder	£8.00
Chains From	£4.75

duignan phelps  
optometrists



**Call 01952 812820**

10 St Marys Street, Newport, TF10 7AB  
(Practice Car Park and Disabled Lift access located at the  
side of our building)

Monday-Friday 9am-5pm, Saturday 9am-12.30  
Sunday Closed

[www.newporteyecare.co.uk](http://www.newporteyecare.co.uk)



## Make healthy eyes your New Year's resolution!

The eyes rarely hurt when there's a problem so it can be easy to delay an appointment and 'make do'.

Yet an eye examination can tell you much more than whether you need new glasses or a new prescription - it's also an important health check.

We can spot many health problems and early signs of eye conditions before you're aware of any symptoms - many of which can be treated if found early enough. We recommend that everyone has an eye exam once every two years, unless otherwise advised.

Joining an eye care scheme is a fantastic way to look after your eyes and receive great value. We offer Eyeplan, which gives members a number of benefits in exchange for a small monthly fee. Benefits include:

- Inclusive eye examinations as frequently as you wish, so any concerns can be checked out
- We can separately offer you great value on eyewear so you have access to a wide range of top quality frames and lenses at special prices
- Your investment in eyewear is protected with accidental damage cover for two years

Give yourself the gift of good vision this Christmas. Pop in and speak to us at Duignan Phelps or call us on 01952 812820.



# Quality care in the community

Brockton Care provides that family friendly feel to care in the community and is the professional agency that aims high in care for local people.

We are asked to provide care in Newport, Market Drayton and towards Gnosall. What's really good is that we are able to provide care in all the villages that maybe hard to reach for other care providers. So even if people are in Sambrook, Tibberton, Hinstock Forton, Edgmond and surrounds we can provide excellent care here too!

Care takes many forms, ranging from a lovely wash in the mornings, or having a meal, drinks, washing and cleaning or even a trip to the shops. We can offer it all. From as little as 30 mins to all day care or even sleeping in to be able to give peace to a client we can arrange for this.

As we have high standards we are always looking for the right carers to join us. Full training and support given and now the care certificate too!

Call the team for information about care or a position with us on 01952 222 555.



**Brockton Care Ltd**

The Office, Bolas Road, Ercall Heath, Telford TF6 6PN

Phone: 01952 222555 Mobile: 07792 948949

web: [www.brocktoncareltd.co.uk](http://www.brocktoncareltd.co.uk) email: [info@brocktoncareltd.co.uk](mailto:info@brocktoncareltd.co.uk)

COMMERCIAL FEATURE

## Where's Anna ..?

By Anna Simons MCSP - Chartered Physiotherapist

Perhaps it's come to my mind because we have just celebrated Halloween, but I thought it time to mention to the lovely OBSERVANT folk of Newport that I have a **SKELETON** on the side of my car. Well actually I have two but let's not split hairs.

In an effort to advertise my Physiotherapy practice I've come up with some rather eye catching advertising on the side of my car, hence the 2 skeletons. So in the style of "Where's Wally" here's an offer you can't refuse. If you spot the car and indeed myself **please feel free to approach me** and ask me about your Physio problem. There is **10% off for NEW patients** if you see me in and around Newport and say hello or ring me (Telling me where you spotted my car).



### What's to gain?

I offer a prompt flexible service, usually seeing patients within a few days and am able to see patients in the evening if they request it. I have 20 yrs. clinical experience. Appointments are an hour long for new patients and between 30 to 45 mins for follow up treatments.

My patients **see me and ONLY ME** so there's absolute continuity of care. My clinic room is a light airy and a professional place to have treatment and I charge the market standard of £40 for a new patient and £35 for a follow up appt.

So if you spot the car and want an appointment give me a ring **or better still stop me for a chat** and some friendly advice.

COMMERCIAL FEATURE

Contact Anna for friendly professional advice about your injury on  
**01952 811525 or Mobile 07887 930642**

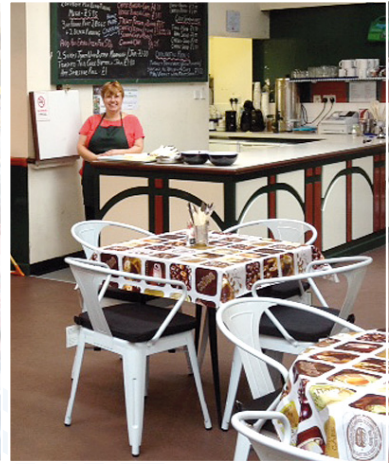




(3) Hey Judes  
Call: 07949 793738



(2) Lee Walker Family Butcher  
Call: 07939 057972



(1) The Gallery Cafe  
Call: 07922 039694



(4) C & D Trading  
Please pop into the market

(1) **The Gallery Cafe** - All day Breakfast, specials board, hot & cold sandwiches eat in or take out, hot & cold drinks, soup, Jacket potatoes, (2) **Lee Walker Family Butcher** - Locally sourced carcass beef, all meats, free range pork and chickens, homemade beef burgers, local Shropshire lamb, (3) **Hey Judes** - Music, guitars, vinyl records, CDs, music merchandise, musical accessories, tambourines, ukeleles, mandolins, strings, (4) **C & D Trading** - House-hold cleaning products and general items, tupperware, batteries, (5) **Cakes and Sweets** - Cakes, biscuits, sweets, bread, crisps, nuts, snack lines, confectionary, breakfast cereal, all products at cut prices, (6) **Nice & Fresh Fruit & Veg** - Fresh fruit and veg, seasonal English produce. Freshly cut beautiful flowers sourced locally, (7) **Valdas Wool and Haberdashery** - Stylecraft Wool, Tivoli, Patons, Wendy, Haberdashery, hand knitted garments made to order, all styles of button, (8) **Forget Me Not Fabrics** - Original handmade textile products, cushion covers, handbags, shopping bags, fabric jewellery, (9) **Past & Present** - A selection of quality vintage, antique and retro clothing and jewellery (includes modern and costume) ideal for Christmas, (10) **Blossom Cards** - Large selection of quality hand made cards, made with love for all occasions with personalised pictures (if required) at no extra cost.



(5) Cakes & Sweets  
Call: 07792 879684



(6) Nice and Fresh Fruit and Veg  
Call: 07773 665543



(7) Valdas Wool & Haberdashery  
Call: 07817 945731



# Newport Indoor Market Hall

This Christmas, discover a beautiful historic building, right in the heart of Newport, packed with local produce and gifts.

## Opening Times - General

Friday 8.30am - 4.30pm,  
Saturday 8.30am - 3pm, please check individual traders' listings online at (<http://bit.ly/newportmarkets>) as some opening times may differ.

## Late Night Saturday - Christmas Lights Switch On

Saturday 28th November  
8am- 7.30pm

(11) SJ Smith Fresh Grimsby Fish - Fresh Grimsby Fish, Icelandic Shelf Cod, Fresh Haddock Norwegian, Shell Bed Plaice, Salmon Shrimp Fed, lemon Sole, (12) Newport Country Market - Homemade cakes, pies, tarts, fruit loaf, honey, jams, chutneys, sponges, savouries and cards.



See inside the Market in the Tablet Edition



(12) Newport Country Market  
Call: 07975 603892



(11) S J Smith Fresh Grimsby Fish  
Call: 01743 600388



(8) Forget Me Not Fabrics  
Call: 07922 039694



(9) Past and Present Jewellery  
Call: 07817 770420



(10) Blossom Cards  
Please pop into the market

## Remember remember the fifth of November

With firework season just around the corner it's time for those of us with pets to consider how to help them cope.

However much we all love fireworks, it's estimated that around 45% of our pets exhibit signs of fear, stress and anxiety when they hear those loud bangs and screeches. So what should you do to help them cope?

Making sure your pet has somewhere to hide is a good idea. Building a dark secure 'den' under a table or behind a couch - away from windows and doors is a good place to start. Why not do this a couple of days in advance? Adding your pets' favourite toys or blanket will make it a happier place. You could consider the use of pheromone diffusers such as Adaptil or Feliway (CEVA) which release an odourless chemical from a plug in device that makes your pet feel comforted and safe. Plug this in ahead of time, near the den you have made.

In the daytime, walk your dogs and tire them out as much as you can! Encourage them to toilet before it goes dark, to prevent being caught outside when the fireworks begin. Cats and those small furry pets that



live outside should be brought indoors if possible. If not, adding blankets and towels to one area of the hutch can help with sound proofing, so long as you ensure that your pet can still see out.

As the sun goes down, draw the curtains and turn up the television or radio to help to mask what's happening and muffle the sound. Lots of normal household background noise helps!

Whilst it can be tempting to comfort your pet, fuss them and feed them treats if they are showing signs of fear, this can actually enforce fearful behaviour and make it worse. It is better to try and engage your pet in a game to take their mind off it and act as normal as possible.

We are always available for a chat to help get your pets safely through bonfire night - so please give us a call if you need us. The very best way to deal with phobias is to start training - so if this one is difficult with your pets - why not pop in so we can plan a training program to get you ready for next year.

# Tern Veterinary Group

## 01952 820222

- Full operating facilities • Regular Clinics
- 24hr Veterinary cover locally

### Consulting Times

Mon - Fri 9am - 10.15am, 4.30pm - 6pm (by appointment)

Saturday 11am - 12pm (by appointment)

### Reception Opening Times

Monday - Friday 9am - 6pm, Saturday 9am - 12pm



Audley Avenue, Newport TF10 7BX (Off A518 Telford Road)

[www.ternvets.co.uk](http://www.ternvets.co.uk)



## Newport Bowling Club

The Club was formed in 1904 and as they have just recently found out started playing fixtures in 1914 albeit they were not in a league.

League Bowling didn't arrive at Newport until 1972 when a team was entered into the Mid Shropshire League. They have come a long way since then. Pictured right, the club's 'C' team who won 2015 season Senior Citizens Division 2.

The club can boast having county bowlers from Shropshire and Staffordshire in their ranks this year, along with a ladies county bowler and several of the juniors being called upon to represent Shropshire in competitions last year.

During the winter months when the greens are being restored and the weather is inclement they have indoor bowling.

Saturday nights they have various activities ranging from a monthly Whist Drive to live entertainment. The Live Entertainment is a new venture and is open to non members to attend.

If you are interested in bowling or joining them as a non bowling member you are invited to go along



and see us for yourself. Further details available from:

Tel: (01952) 820479

Email: [enquiries@newportbowlingclub.co.uk](mailto:enquiries@newportbowlingclub.co.uk)

# The Red Lion

## Great Chatwell

Join Us  
For Christmas

**Request your Christmas  
information pack today**

visit [www.theredliongreatchatwell.co.uk](http://www.theredliongreatchatwell.co.uk)

Christmas Day

5 courses for £64.95

Christmas Fayre

2 courses for £19.95  
3 courses for £23.95

GREAT CHATWELL TF10 9BJ, 01952 691643



# WINTER SPECIALS FROM RVT NEWPORT

SPECIAL OFFER



**JOHN DEERE KIDS OVERALLS**  
 Sizes 1-12 years with full zip  
**£20**



**JCB KIDS OVERALLS**  
 Sizes 2-11  
 RRP £35.99  
 Our Price **£30**



**ROLLY RIDE ON TRACTORS**

A model to suit all ages.  
 Prices from **£40**



**NOW STOCKING TRACTOR TED!**  
 Pop in to view the range!  
 Clothing, DVD's, toys, PJ's & more!



**FS55**  
 Petrol strimmer  
 perfect for home  
 gardens & small  
 areas of grass  
**£195**



**MS181**  
 14" chainsaw ideal for occasional  
 and professional users.  
**£200**



**10% DISCOUNT ON TOYS WHEN QUOTING RVT001!**

**CALL IN TODAY!!!**

Rea Valley Tractors Audley Avenue Industrial Estate, Newport TF10 7BX  
 Tel: 01952 822922 [paulyoung@reavalleytractors.com](mailto:paulyoung@reavalleytractors.com)  
 Monday - Friday 8am-5pm Saturday 8am-12 noon  
[www.reavalleytractors.com](http://www.reavalleytractors.com)



# The late show

by Martin Blow - [www.specialperennials.com](http://www.specialperennials.com)

Autumn in the perennial garden is a time when colour slowly ebbs away into browns and russets of fading leaves. But there are still some easy to grow perennials that are continuing to flower and are ideal for injecting some zing into October, November and possibly beyond.

One of my favourites is the Kaffir Lily, which you might find labelled as either *schizostylis* or *hesperantha*. These remind me of mini gladioli with their sword-shaped leaves and 1ft (30cm) flower stems. The flowers are large and attractive and last from late September through November. You can even pot up a few of the plants to flower indoors into December.

They are what we call “hungry feeders” meaning they quickly take the goodness from the soil, so do mulch in spring and give them a good strong feed of a balanced fertiliser to keep them flowering well.

There are lots of varieties in red, pink and white. My favourites are the large red “Major” and the palest pink ‘Pink Princess’.

*Ageratina* “Chocolate” (below left), is an unusual type of hemp with bronze or brown leaves through the summer topped by white flowers at the end of October. The flowers are a bonus really as we normally grow him as a foliage plant to set off brighter flowered plants. He looks particularly impressive as a backdrop for white Phlox.

Speaking of “chocolate” plants, coming into bloom for October is the perennial sunflower, *Helianthus* “Bitter Chocolate” with chocolate-scented flowers on his tall 6ft (180cm) stems. This is one for a sunny spot and planted close enough to the front of the border to allow you to sniff the flowers for a chocoholics-hit each time you pass!



*The red variety of Schizostylis Major (above)*

Red-hot poker flowers at different times of the year depending on variety. The latest in my garden is a South African species – the straight-leaved poker (*Kniphofialinearifolia*) with orange or yellow flowers. This comes into bloom right at the end of October – I’ve even seen him capped with snow!

Michaelmas Daisies (Asters) are well-loved late bloomers typically coming into their own by late September. My favourites are the tall, dark-stemmed types like “Calliope”, “Glow in the Dark” and “Vasterival” that start to flower in late October and become a magnet for butterflies. There is one in my garden that holds fire until November, the tall, lavender blue “Novemberlaan” (below right) – a very welcome sight.

Late autumn may be the time to slow down in the garden but there’s still plenty of colour to be had if you choose the right plants.





## Official Opening of New Shop for Cookshop Newport



### About:

Sue and Hannah Tranter of Cookshop Newport, welcomed friends, family and customers old and new to the official opening of their new shop.

Newport Mayor, Tim Nelson, officially opened the new shop, located at 64 High Street, Newport on Friday 2 October.

The Open Day included special offers, demonstrations and a charity raffle, with proceeds going to Macmillan Cancer Support.

### When & Where:

Newport - 2 October 2015

To see your local event in the next issue, please send your photographs and details of what, where and when, to:

**editor@allaboutnewport.co.uk**  
**by 5pm, Monday 9th November**  
**2015**

Please note we can only accept photographs where the person providing them owns the copyright or, has the permission of the original photographer. Photographs should ideally be copies of the original (uncropped) image.



## The night the Proms came to Gnosall

### About:

Saturday 10th October was a night to remember in Gnosall when in excess of 80 people were treated to the most amazing evening of music and singing courtesy of the brilliant Rugeley Power Station Band and Stafford's own Military Wives Choir.

The evening commenced with the the Rugeley Power Station Band opening with a very lively and diverse programme of music from Colonel Bogey through to Pirates of the Caribbean, all of which got the Hall rocking and the enthusiastic audience responding with gusto.

They were followed onto the stage by the Military Wives Choir from Strafford , resplendent in their evening dresses again treating the audience to a very varied programme including an amazing rendition of 'I had a Dream from 'Les Miserables'.

An amazing £340 was raised which will all be used for Gnosall Lions approved good causes.

### When & Where:

Gnosall - Saturday 10th October

To see your local event in the next issue, please send your photographs and details of what, where and when, to:

**editor@allaboutnewport.co.uk**  
**by 5pm, Monday 9th November**  
**2015**

Please note we can only accept photographs where the person providing them owns the copyright or, has the permission of the original photographer. Photographs should ideally be copies of the original (uncropped) image.



# This month's Puzzles & Brain Teasers.

This month's word puzzle has a Zoo Animals theme. Solutions can be found on Page 66. **Good luck.**

H	M	J	F	Y	X	N	M	O	B	D	Y	W	H	U	S	S
P	B	W	J	D	I	O	R	F	H	E	V	X	Q	D	E	G
U	R	D	E	U	N	A	E	P	A	P	A	A	B	W	A	Q
U	K	F	G	K	N	R	S	P	N	A	R	R	Z	W	L	A
Y	U	N	E	G	L	E	M	A	C	I	H	E	J	N	R	N
T	E	Y	U	O	L	L	I	D	A	M	R	A	G	B	W	L
P	N	T	P	E	R	I	R	U	K	L	P	K	E	I	I	N
L	A	A	G	B	B	S	Q	H	L	C	S	Z	N	O	T	F
N	V	K	H	I	X	U	H	O	I	G	V	O	N	J	H	O
P	B	I	G	P	R	G	E	F	Z	J	Z	O	Z	S	Y	W
N	V	Y	P	S	E	A	L	W	A	S	A	R	Y	G	X	I
O	C	U	Y	C	H	L	F	R	R	O	Z	A	D	Y	T	X
D	O	L	P	H	I	N	E	F	D	P	B	G	H	N	J	T
J	I	H	G	M	J	D	V	K	E	P	U	N	Q	H	J	A
S	N	A	K	E	M	J	T	N	K	I	N	A	N	P	P	E
H	M	F	O	R	Y	G	P	N	S	H	N	K	O	R	K	C
Y	B	T	X	A	Q	Z	L	Z	D	J	Y	C	P	D	O	K

- PENGUIN
- ELEPHANT
- BEAR
- SEAL
- CAMEL
- APE
- TIGER
- DOLPHIN
- KANGAROO
- HIPPO
- ZEBRA
- LIZARD
- ORANGUTAN
- MONKEY
- SNAKE
- LION
- GIRAFFE
- ARMADILLO

SUDOKU 27

	4					6		
	8	2					5	
3	6		4	8	9	1		
			1	7				3
			3		2			
2				6	5			
		1	2	4	7		6	8
	2					7	3	
		6					4	

SUDOKU 28

		7	6					
				6				9
		5			9	3	2	
6	9	4	1				8	2
			4		5			
3	2				9	1	7	4
			1	9	4		2	
8					6			
							8	1

Did you find these puzzles too easy? Tell us at: [editor@allaboutnewport.co.uk](mailto:editor@allaboutnewport.co.uk)





## Shropshire Wildlife Trust



*Kids just want to have fun - fallen leaves provide nature's perfect playground*

## Autumn leaves

by Sarah Gibson - [www.shropshirewildlifetrust.org.uk](http://www.shropshirewildlifetrust.org.uk)

The monotonous drone of leaf blowers is the background noise to November, flurries of fallen leaves chased away from pavements and parks; a whiff of petrol lingering in the air. Leaves blow into shop doorways, unexpected encounters with nature among the bright lights and advertisements, soon to be swept away. A few weeks ago they graced our trees; now they are litter to be vacuumed, a problem to be tidied.

Away from towns, hard surfacing and worries about slip hazards, autumn leaves slowly settle and decay, feasted on by fungi, nourishing the ground beneath the tree. Beetles, caterpillars, spiders and a whole host of tiny creatures live under them; hedgehogs make leaf nests to hibernate in.

Sunny days in October helped give us a glorious autumn, with glowing field maple and silver birch; the pale yellow of ash. In response to shorter days, trees draw the nutrients from their leaves back inside themselves, storing up energy for the following spring. The chlorophyll which makes leaves green

breaks down and exposes the leaves' other pigments – red, orange and yellow.

Watching the leaves fall is one of the pleasures of autumn. Sometimes a gale seems to blow them all off in a night and you wake to the stark treescape of winter. Other times a frost might finish them slowly; the odd, golden leaf spiralling lightly to the ground. Fallen, their glorious abundance provides nature's perfect playground.

Instinctively children scuff them back in the air, throw armfuls of wet leaves at each other and roll in them.

Make the most of leaves: scoop them out of ponds and sweep them off paths, but keep them in a heap or under hedges. Blackbirds, thrushes, wrens and robins will feast on the insects among them and slowly, as they break down, they will nourish the earth.



# What a Weekend In Newport

# 3 DAYS

of Discounts, Offers, Promotions, Donations

## PLUS 3 DAY RAFFLE - 1 MASSIVE PRIZE

Buy your raffle ticket from most of Newport's shops. Just £1

Products and Gift Vouchers from most of the companies below all in one prize!

Appleby & Shaw, Artworx, Boots, CoCo 64, Cookshop, Daisy Chain, Hey Judes, Home and Decor Shop, Kitty Kraft, Little Card and Gift Company, Moolace, Newport Beds, Nova Cycles, No 45, Toggs and Cloggs, The Courtyard, Waitrose and many more ...

## THANKSGIVING THURSDAY 26th November

It was reported by national newspapers last year that 1 in six Brits celebrate Thanksgiving and this number is set to rise year on year. Celebrate with Newport and shop locally. Most of the businesses taking part in this promotion will be donating to **Newport Cottage Care Centre** - Working locally for your community.

## 'BLACK FRIDAY' 27th November

**SAVE! SAVE! SAVE!**

Black Friday is looming, The day where bargain hunters across the country (and world) try and grab themselves a great deal heading into the festive period. Newport is joining in with this promotion to offer Discounts, Offers & Promotions galore! **Visit Newport and find out more!**



## SWITCH-ON SATURDAY 28th November

**Make a Day of it! Shop, Explore, Enjoy and Socialise**

Raffle prize draw will take place at around 6pm on 28th November at the Lights Switch On. **Will you be the lucky winner?**

A procession led by a horse drawn carriage on Saturday 28th November will leave the Guild Hall around 5.45pm and make its way down the High Street to St Nicholas Church. Pre-switch on entertainment (provided by Nova FM). The lights are switched on around 6pm by the Christmas Card Competition winner and they will also draw the big prize raffle winner! This will be followed by a festive sing-a-long in the church accompanied by the Salvation Army.

*Most retailers and the Indoor Market will open late on this Saturday.*



# Christmas Food & Craft Fayre: A day out for all the family

Weston Park's Christmas Fayre is becoming a favourite tradition, bringing together the very best gifts and festive food and drinks.

Unusual gifts, creative inspiration, talented artists and makers, quality food producers; you'll find it all here.

There will be **over 80 stalls** set indoors and outdoors, visitors can take a ride on the **Miniature Railway** and there will be plenty of opportunities to enjoy a bite to eat on the day whether it be a hog roast or lunch in the Granary Grill.

At the **Granary Deli** you can make up your own gift hampers with a huge selection of beautiful produce and stocking fillers to choose from.

The House, **beautifully decorated for Christmas** will be open to explore and children can follow a trail to learn more about festive traditions and how these were celebrated at Weston.

The **Fayre is open from 10am – 4pm** and admission is £1 per person.

House admission and miniature railway extra.



For further information please visit  
[www.weston-park.com](http://www.weston-park.com)

**The Granary**  
GRILL & DELI

**Christmas for Food Lovers**  
Festive Menus  
Great Gifts  
Indulgent Treats  
Wintery Walks

The Granary Grill & Deli, Weston Park,  
Weston-under-Lizard, Nr Shifnal, Shropshire  
TF11 8LE | 01952 852107

[granarygrill.com](http://granarygrill.com)

f t w

*Christmas Food &*  
*Craft Fayre* WESTON PARK

*Saturday 5th and*  
*Sunday 6th December*

f t [WESTON-PARK.COM](http://WESTON-PARK.COM)

80 handmade craft and artisan food stalls  
Take a tour of the House beautifully decorated  
for the festive season  
Delicious gifts and stocking fillers  
Ride on the Miniature Railway through Temple Wood

£1 per person  
10am - 4pm  
House and Miniature Railway extra

WESTON PARK, WESTON-UNDER-LIZARD, NR SHIFNAL, SHROPSHIRE

# Dates for your Diary...

Map locations available for all events, online at [allaboutnewport.co.uk](http://allaboutnewport.co.uk)

Post your **What's On** events for free at <http://bit.ly/whatsonlocally> by Friday 13th November, 5pm to appear in the next issue of the magazine. Please note that information posted online and in magazine is provided in good faith. We ask that you contact the organiser to confirm dates, times and details, as we cannot be held responsible for inaccuracies.

## Newport (Shropshire) and District Chamber of Commerce

Weekly/Monthly Event

The Chamber meet on the 3rd Monday of every month at The Royal Victoria Hotel, Newport at 5.30pm. The Chamber is here to support you by addressing any business issues or concerns you may have, helping your local business to grow.

## Newport Farmers Market

Weekly/Monthly Event

Newport Farmers' market is run on the 3rd Thurs of each month, and is well worth a visit. Located in The Square and also by the Butter Cross, next to St Nicholas church. The market runs from 9am - 2pm.

## Newport Life Drawing and Figure Sculpting Workshops

Weekly/Monthly Event

Saturday mornings at Adams' Grammar School. For further information please call Michael on 07528489320 or email [michaeljamespotter@hotmail.co.uk](mailto:michaeljamespotter@hotmail.co.uk)

## Craft Club

Weekly/Monthly Event

We meet every Monday at 7pm to 9pm in Kitty Kraft shop St Mary street Newport. All necessary equipment and instruction will be supplied. Call Emma on 01952 820940 for more information.

## Sing4Fun at Burton Borough School

Weekly/Monthly Event

Come and join the regions newest POP,ROCK,JAZZ choir for both men and women. Great, enjoyable arrangements of songs from Abba to Adele, Beatles to Bruno Mars. FREE taster night. Every Thursday 7.4-9pm.

## Newport Bridge Club

Weekly/Monthly Event

Tuesday or Thursday 7pm The Hub St Mary's Street Newport. We welcome duplicate bridge players of all standards. Interested? come and join us, call 01952 814474.

## Trefoil Guild

Weekly/Monthly Event

Girlguiding for adults. Every 1st Thursday at the Cosy Hall, Water Lane, Newport, TF10 7LD. Phone Cris, 01952 253960 for more details.

## Every SATURDAY NIGHT. Live Entertainment

Weekly/Monthly Event

Newport Navy Club, Bellmans Yard, Newport TF10 7AJ £3 per person admission for non-members. Pay on the door. For more info- Contact Jez (club steward). 07772611540

## Bridge Class

Weekly/Monthly Event

EVERY MONDAY. Victoria Bridge Club. Learn how to play bridge, or improve your own abilities. everyone welcome. 7.30p.m. onwards. Newport Navy Club, Bellmans Yard, Newport. TF10 7AJ for more info- contact Jez (club steward) 07772611540

## OPEN MIC. NIGHT ~ Every TUESDAY

Weekly/Monthly Event

Open Mic. Night. Every Tuesday. 8p.m. onwards. £1 admission. Price includes a raffle ticket. Newport Navy Club, Bellmans Yard, Newport. TF10 7AJ contact Jez (club steward) 07772611540 or Jude Paton (event organiser) at Hey Judes, Newport.

## BINGO ~ every THURSDAY

Weekly/Monthly Event

50p admission for all guests. Eyes down at 7.45p.m. Bar open at 7.30p.m. Newport Navy Club, Bellmans Yard, Newport, TF10 7AJ. For more info- Contact Jez (club steward). 07772611540 Friendly atmosphere, and a good night out at a budget price.

## POOL NIGHT ~ every Wednesday during season

Weekly/Monthly Event

Spectators or players welcome for weekly matches during the pool season. Alternate venue between The Newport Navy Club, Bellmans Yard, Newport, Shropshire. TF10 7AJ and the opposite team's base. For more info- Contact Jez (club steward). 07772611540

## DOMINOES ~ every FRIDAY during the season

Weekly/Monthly Event

Spectators or players welcome for weekly matches during the dominoes season. Alternate venue between The Newport Navy Club, Bellmans Yard, Newport, Shrops. TF10 7AJ and the opposite team's base. For more info- Contact Jez (club steward). 07772611540.



## Remembrance Sunday

**8 November 2015** - A procession of the Mayor and dignitaries, including Scouts and representatives of organisations, and the Newport Chamber Chairman parade to join in a Church service at 11am.

It is followed by the laying of the wreaths by the representatives at the Churchyard Cenotaph. Names of the war dead from Newport are read out by the Vice Chairman of the Newport Chamber at the Cenotaph.



**TAI CHI (Moy Style)****Weekly/Monthly Event**

A unique form of Tai Chi promoting health and well being. Beginners class Wednesdays 10.00 - 11.00 am in Church Aston Village Hall, Wallshead Way, Church Aston TF10 9JG. Suitable for adults of all ages and abilities Contact Tony Beckett 07983 404245

**Newport Writers Circle****Weekly/Monthly Event**

Local writers group meeting in Newport on the second Wednesday of the month (except August). If you are interested in joining the group please contact Mark Pearce on 01952 550557 or markpearce17@hotmail.com for more information.

**Bingo Every Friday & Sunday Evening at Newport Royal British Legion Club****Weekly/Monthly Event**

Bingo Session every Friday and Sunday Night at Newport RBL Club. Situated on Audley Road, Newport TF10 7DP. Doors open 7pm. Bar Open 7pm. Eyes Down 8pm. For more info contact Colin Farge (Secretary) on 07977 488 619.

**Dressmaking courses and workshops****Weekly/Monthly Event**

Dressmaking courses run on Thursday mornings 10.00am to 12.30pm and Thursday evenings 7.30 - 9.30pm at Cosy Hall, Newport. Courses last for 6 weeks. Monthly Sewing on Saturday; workshops run 2.00-5.00pm. Catherine 01952 276061.

**Edmond Toddler Group, Edmond Village Hall****Weekly/Monthly Event**

Every Thursday in term time 10.00 - 11.30am. Lots of toys for pre-school children and babies, craft activities, songs and snack time. Refreshments for adults. £1.50 for first child and 50p extra for each additional child. New faces always welcome.

**Bradford Arms Folk Club****Weekly/Monthly Event**

Opening 10th April 2015 - New weekly folk club running every Friday from 8.30pm at the Bradford Arms, Ivetsey Bank, near Wheaton Aston (on A5 near Weston Park) Contact Linda 01952 526520 for more details.

**Acoustic Music Night****Weekly/Monthly Event**

Hosted by Pete Meyrick and Andy Wain. All styles of Musicians and Singer/Songwriters welcome. First Wednesday every Month, 8.30pm start. At the Cock Inn, Woodseaves. Phone 01785 284343.

**Edmond Village Hall Afternoon Teas****Weekly/Monthly Event**

Every Thursday afternoon 2.30-4.30pm. £3.00 buys a pot of tea or coffee and a hearty slice of homemade cake. Regular events and produce sales. Please do come and join us.

**Local Fitness Classes With Nikki****Weekly/Monthly Event**

Mon 10-11am Zumba (easy) @ Church Aston Village Hall, Mon 6-7pm Body Blitz @ Church Aston Village Hall, Tues 6.30-7.30pm Zumba @ Cosy Hall, Fri 9.30-10.30am Zumba (easy) @ Cosy Hall. ALL LEVELS WELCOME £4 per class Contact Nikki 07967 343728

**Adult Yoga****Weekly/Monthly Event**

Small friendly class. Suitable for Beginners. Dru Yoga Starting with activation to some lively music, then flowing sequences, postures, breathing techniques and deep relaxation. Mondays 10am to 11am at Lilleshall Memorial Hall Tel 07970 731174

**Midlands Rat Club - & Fancy Rat Shows****Weekly/Monthly Event**

The Midlands Rat Club (MRC) is the area's club for fancy rat lovers, pet rat owners and breeders. Fancy rat shows are held every two months. Free entry to venues - Visitors welcome. For details of next meeting, please visitmidlandsratclub.org

**Newport Toy Library****Weekly/Monthly Event**

Every Friday Morning at the Cottage Care Centre. £2 a year membership, toys to borrow from 10p per week. For the under 5s we have outdoor ride on tractors, cars, trikes and bikes, slides, trampolines, shape sorters, electronic toys and stairgates.

**Rush Hockey****Weekly/Monthly Event**

Consisting of small 5/6 aside games, the ball is bigger & lighter with only a handful of rules - it's social, fun & good exercise. No previous ability required! Lilleshall National Sports Centre - Wednesdays 7.30-8.30pm. £1 <http://bit.ly/1KoYcQg>

**Yoga****Weekly/Monthly Event**

Suitable for mixed ability participants, including those who have never done yoga before. Lilleshall National Sports Centre - Wednesday's 6.30pm - 7.30pm. £4.00 per session or £30.00 for an 8 week block <http://bit.ly/1cRVGNU>

**Forever Fit****Weekly/Monthly Event**

Designed for those 50+, these activities are a great way to get fit, stay active & meet new people. Lilleshall National Sports Centre, Friday mornings 10am-12.30 includes a range of activities for you to choose from. <http://bit.ly/1Lt9w5d>

**Over 50s Racketball****Weekly/Monthly Event**

For all abilities at Lilleshall National Sports Centre, Friday's 11.30 - 12.30 - a very fun and social way to get fit with new players always made to feel welcome. £3.50 per session

## Newport Christmas Lights Switch On

**28 November 2015** - A procession from the Guildhall to St Nicholas Church around 5.45pm will start an evening of events in Newport. The Christmas Lights switch on is around 6pm.

This will be followed by a festive sing-a-long in the church accompanied by the Salvation Army. Nova FM will provide pre-procession entertainment.



## No Strings Badminton

### Weekly/Monthly Event

Pay and play semi-structured sessions that are co-ordinated but not coached at Lilleshall National Sports Centre, Monday's 6.30pm - 7.30pm, £2 per session. Sociable and fun way to get fit - just grab a racket, rally around friends and head on court.

## Easy access walks for all - Walkabout Wrekin

### Weekly/Monthly Event

Every Thursday at leaving at 6.00pm (please arrive 10mins early) from the car park at the Red House Lilleshall. Get back exercising with local area walks from 15 to 90 mins duration depending on your ability. Steve Shaw 01952 810314

## Dalen Singers of Newport

### Weekly/Monthly Event

A small friendly, mixed choir founded 30 years ago in Newport. We rehearse Tuesday evenings at 7pm at Trinity Church, Wellington Rd, Newport. We sing a light style of music. If you would like to meet us just come along or call 01952 811741.

## Church Aston Table Top Sale

### Weekly/Monthly Event

Held 2nd Sunday monthly 11am-1pm at Church Aston Village Hall. Tables £6 Proceeds to Church Aston Infants School. Amanda 07905 528438 to book. Please note that November sale will be on 15th November to allow for Remembrance Sunday.

## Aqualate Golf at Newport

### Weekly/Monthly Event

Golf roll up sessions. Monday evenings 6pm - 7pm for juniors (£4 per session) Monday evenings 7.30pm - 8.30pm for all (£5 per session). Tuesday mornings 10.30am - 11.30am for ladies (£5 per session). All equipment and tuition included. 01952 811699.

## Argentine Tango Classes

16 October 2014 - 22 December 2016

Thursdays from 7.30 at Cosy Hall, Water Lane, Newport TF10 7LDTango Newport teach complete beginners this wonderful dance NO experience necessary - Come along with or without a partner and discover how quickly Bruce and Tricia get you dancing.

## Newport Indoor Market Food Fayre

10 October 2015 - 12 December 2015

Second Saturday of every month in the food hall, 9am till 3pm stalls are £10 for a six foot table, if you are interested in a stall contact Ann Fowell 07975 603892, hygiene certificate and insurance essential.

## Illustrated talk on Moths with

### Newport Branch of SWT

10 November 2015

Local man Jim Shaw is giving an illustrated talk on Moths and the Moth recording scheme Church Aston Church Hall 7.30pm Simon 01952 825184.

## GFest Film Night

13 November 2015

Showing of two films 'Paddington' at 5.30pm and 'A royal night out' at 7.30pm at the Grosvenor Centre, High Street, Gnosall. Tickets £4 adults. £2 children. Family ticket £10. Contact Mary Booth Tel 07980 485 667

## Micky Bee at NEWPORT NAVY CLUB

14 November 2015

MICKY BEE at Newport Navy Club, Bellmans Yard, Newport, TF10 7AJ. 7.30 till midnight. £3 per person admission for non-members. Pay on the door. Contact Jez (club steward) 07772611540 Live entertainment every Saturday night. A great Newport venue.

## Folk Concert 'Flossie Malavialle' French/English Folk Singer

14 November 2015

Moreton Millennium Community Centre, Nr Newport TF10 9DS @7.30pm Tickets £10 on the Door £9 before 31st Oct. Special offer Tom Lewis + Flossie Tickets for £17 before 30th September Contact Patricia 01952 691222 email tricia\_inn@hotmail.com

## Percy Thrower's, a Wyevale Garden Centre Christmas Fair

14 November 2015 - 15 November 2015

Free entry to public. Over 20 local artisan food & craft stalls. Enjoy Christmas shopping in our brand new garden centre! Sat 9am - 6pm, Sun 10.30am - 4.30pm. Are you interested in trading? For more info or to book a pitch please email us.

## Christmas Craft Fayre

14 November 2015

We're holding a Christmas Craft Fayre on Saturday 14th November between 10.00-3.00 at The Parish Rooms, New St., Newport. We have lots of stalls including handmade cards, haberdashery, vintage fabrics, jewellery, cupcakes, candles and much more.

## 10 Steps to Time Team - The Story of Archaeology

16 November 2015

Computer presentation and talk by David Wilkinson ex-Stafford Borough Council Archaeologist at Baptist Hall, Water Lane. 7.30pm. Visitors £3 incl refreshments.

## Gnosall Jambusters WI Christmas Shopping Evening

17 November 2015

The Christmas shopping evening takes place on Tuesday 17th November at Gnosall Memorial Village Hall, 7-9pm with free admission. There will be a range of goods for sale including chocolate, Jewellery and many hand crafted gifts.

## Christmas Shopping Evening at Adams' Grammar School

18 November 2015

Wednesday 18th November, 7pm to 9.30pm in the school's Sports Hall. Local traders will be offering a unique selection of gifts and stocking fillers. Musical entertainment and refreshments available too. Admission £3 (under 18's free).

## NCCC RACE NIGHT

20 November 2015

Race Night at Newport Cottage Care Centre, Upper Bar, Newport. Friday 20th November. 7.30pm - 10.30pm. Tickets £6 in advance - includes fish and chip supper. Raffle and bar available.

## Dave Maiden at NEWPORT NAVY CLUB

21 November 2015

DAVE MAIDEN at Newport Navy Club, Bellmans Yard, Newport, TF10 7AJ. 7.30 till midnight. £3 per person admission for non-members. Pay on the door. Contact Jez (club steward) 07772611540 Live entertainment every Saturday night. A great Newport venue.

## Newport Green Drinks

23 November 2015

Newport's Own Environmental Group Financial Advisor Jonny Howorth will speak on Ethical Investment 7.30 for 8pm, The Phez on High Street for info Cath 07528 078 142.

## Percy Thrower's Christmas Workshop

24 November 2015

Enjoy a demonstration and a hands on workshop making your own Christmas wreath in the Greenhouse at Percy Thrower's 10am-11am or 2pm-3pm £25 per person includes materials & refreshments. Suitable for all abilities.



**The Sleeping Beauty Pantomime**

25 November 2015 - 28 November 2015

A traditional pantomime for the family taking place in Pattingham Village Hall on Wednesday 25th November 2015 to Friday 27th November at 7.30pm, plus Saturday 28th November at 2.30pm. For tickets call 01902 700748

**Newport in Bloom Quiz Night**

27 November 2015

Venue Rugby Club Newport. Start 7.30pm. Tickets £20 per team of 4 (includes hot supper). Please book table and supper in advance by contacting Jane Stiles (01952 813897 / 07891 893 275).

**Soul Nite at the Royal Naval Association, Newport**

27 November 2015

Rare & Northern Soul, Uptempo R&B on vinyl with guest DJs Col Kidson, Julie Williams and Eddie Swoz Szwarc plus resident DJs Dave, Paul and Russ. Dancing from 7.30pm till 1am. Tickets £3 or £4 on door from Hey Jude's in the Market 07949 793 738.

**80s Disco & Dinner Night**

28 November 2015

By Church Eaton PTA - 7.30pm till late. Advance ticket only, £25 p.p to raise money for the school. Includes 3 course dinner. Please visit website for details [www.churcheaton.staffs.sch.uk](http://www.churcheaton.staffs.sch.uk) or email [louise@mcintock.fsnet.co.uk](mailto:louise@mcintock.fsnet.co.uk) or Tel 01785 823343.

**Harry James at NEWPORT NAVY CLUB**

28 November 2015

HARRY JAMES at Newport Navy Club, Bellmans Yard, Newport, TF10 7AJ. 7.30 till midnight. £3 per person admission for non-members. Pay on the door. Contact Jez (club steward) 07772611540 Live entertainment every Saturday night. A great Newport venue.

**Classical Guitar Duo Julian Vickers & Dan Bovey**

28 November 2015

Saturday 28 Nov at 7.30pm at Cosy Hall Water Lane Newport TF10 7LD. A welcome return for the duo with a new programme following their highly successful 2013 visit. Full details and tickets from website [www.newportmusicclub.org](http://www.newportmusicclub.org) or 01785 822196.

**Edgmond Village Hall Christmas Fair**

29 November 2015

Christmas Fair with numerous stalls. 11.00am - 4.00pm. Free Entrance, hot Turkey baps and Mulled wine, mince pies tea and coffee available. Details from Anne Green 01952 814312 or Denise Bishop 07718 424957.

**Apley Farm Shop Christmas Craft Fair**

05 December 2015 - 06 December 2015

Enjoy a day out to Apley Farm Shop's wonderful Craft Fair. We have local crafters selling handmade stationary, jewellery, accessories, photography, art, kitchenware, presents and so much more. Santa's Grotto & Christmas shopping 10am - 4pm. Free entry.

**Mark Anthony at NEWPORT NAVY CLUB**

05 December 2015

MARK ANTHONY at Newport Navy Club, Bellmans Yard, Newport, TF10 7AJ. 7.30 till midnight. £3 per person admission for non-members. Pay on the door. Contact Jez (club steward) 07772611540 Live entertainment every Saturday night. A great Newport venue.

**Green Fields Christmas Festival**

05 December 2015 - 06 December 2015

Saturday & Sunday 10am to 4pm. All undercover and plenty of free parking! Over seventy of our favourite food & craft producers, lots to sample and try. Exotic Zoo and bouncy castle. Music, cooking demos and hundreds of unique Christmas gifts!

**Open 24/7, 365 Days a Year****To or From Newport Town Centre**

	Car	Minibus/8*	Minibus/16*
Gnosall	£9.00	£14	£21
Woodseaves	£8.50	£13	£22
Eccleshall	£10.50	£16	£24
Tibberton	£6.50	£10	£15
Edgmond (HAU)	from £4.50	from £8	from £12
Market Drayton	£14.50	£22	£33

\* Cars seat 4 persons, minibuses seat 8 or 16. Fares are each way and are subject to an extra charge of up to 50% from midnight to 6am.

**Taxi Driver Vacancies**

**Very Good Earnings Potential of £1,000 per week\***

- #1 Put your own vehicle on as a private hire vehicle (taxi) from £100 rent per week (needs to be less than 10 years old).
- #2 Rent a taxi from £40 per 12 hour shift.
- #3 Rent to buy a taxi from £150 per week (repayable over at least 12 months).
- #4 Rent a taxi 24/7 for a flat fee of £300 per week.

\*Limited vacancies available.

# H.A.I.R.P.O.R.T



All aspects of hairdressing including: Foil highlights, semi permanent colours, permanent tinting, Perming, cut & blow dry, curling or straightening, hair up including party styles or wedding hair styles, gents hair cutting. Free consultations.

**9, High Street, Newport, Shropshire TF10 7SD**  
**01952 813656**

enquiries@hairportofnewport.co.uk

Mon: Closed, Tue-Fri: 9am-5pm, Sat: 9am-4pm, Sunday: Closed

## Get Your Boiler Ready for the big Autumn, 'TURN-ON'

• Qualified and Experienced Gas Safe, OFTEC & HETAS engineers • All Commercial & Domestic gas work including LPG + Oil • Landlords & Homeowners Gas Safety Checks • Plumbing & Heating • Boiler Servicing, Installation and Repairs  
Call us today on 01952 460216



**Advanced**  
Heat Solutions Ltd  
Commercial & Domestic | Plumbing & Heating

Mobile 07736 320733

Mobile 07713 974515

advancedheat@mail.com



571303

## Let's Get It Shot



Providing a wide range of services from video production and promotional material, to sound for concerts, events and discos! Based in Newport we love working with local groups, events and businesses.

**Get in touch** to see how we can help you today

**Jonathan Newton - Let's Get It Shot**  
**Video & Sound Services 07595 760527**

info@letsgetitshot.co.uk

## Does your Car need an MOT, Service or Repairs?

**Bellmans Yard Garage** can help.



• Ideally located right in the centre of town  
(Just off the High Street, opposite the NatWest Bank and between Nock Deighton and the Co-op Bank)

• Free courtesy cars • Free local collection and delivery



• Local breakdown recovery service • MOT tests on-site  
• Servicing and repairs to all makes • Diagnostics  
• Wheel alignment • Air conditioning and much more...

**Bellmans Yard, High Street, Newport TF10 7AJ**

**Tel: 01952 814808 or 811076**

Email: info@brownsnewport.co.uk | www.brownsnewport.co.uk  
Open 8am-6pm, Monday-Friday, Saturday (by appointment)



## Electrical Contractors

A friendly family business offering a reliable and competitive service by fully insured NICEIC Registered Electricians

- All Electrical Work Undertaken
- Fuse board upgrades
- House Rewires
- Security Alarms (Wired & Wireless)
- CCTV
- TV Aerial Upgrades
- Electrical Safety Reports (Landlords Certificate)
- Flat Screen TVs, Wall Mounted Installations  
"No Wires to be Seen"



## FREE QUOTES & ADVICE



**For special offers and services visit:**  
**www.buzzsparks.co.uk**

Call your LOCAL friendly Electrician  
'Buzz' on: 01952 272382 or 07714 216244  
Email: buzzsparks@btinternet.com





**Expert dressmaking tuition in Newport & Shrewsbury**

• Private Tuition • Courses • Workshops

Enjoy learning to make your own clothes that look fabulous and fit perfectly.

Contact Catherine on 01952 276061  
[www.lovedressmaking.co.uk](http://www.lovedressmaking.co.uk)



**LNS POOCHIES**

Doggy Day Care . Pet Taxi  
 Dog Hydrobathing Service  
 Pet Microchipping

01630 638638 or 07794 742970  
 Hinstock, Market Drayton TF9 2SP

[www.lnspoochies.co.uk](http://www.lnspoochies.co.uk) | [claudia@lnspoochies.co.uk](mailto:claudia@lnspoochies.co.uk)  
 Facebook LNS Poochies

**Soft Furnishings**  
*Made to measure....*



- Curtains • Blinds
- Cushions...

and other soft furnishings for your home

**FREE MEASURING AND ADVICE**  
*Fitting service also available*

Call Rachel Harris 01952 840748

**Reiki ∞ Angelic Reiki**  
**Ear Candling**



**Holistic Heaven**

Call Jane Frost on 07779 277045

Based at The Back & Body Care Clinic, Newport or The Rock, Telford. Call 01952 825042

[jane.frost@blueyonder.co.uk](mailto:jane.frost@blueyonder.co.uk)

**Car Spares, Tools & Accessories**  
 Huge Range of Stock Available



**AUTOMOTIVE COMPONENTS (SALOP) LTD** Contact Phil or Dave on  
**01952 820247**

Salters Lane, Newport TF10 7LB  
 Monday-Friday 8.30am-6pm; Saturday 9am-3pm  
[www.carpartsinnewport.co.uk](http://www.carpartsinnewport.co.uk)



**Moving or Improving?**  
**Commercial or Domestic**

- Shopfitting
- Wall/Floor Tiling
- Garage/Room Conversion
- Laminate/Hardwood Floors
- Bespoke & General Joinery
- Complete Bathrooms & Kitchens
- Painting & Decorating
- Garden Maintenance



Professional, friendly reliable service offering a free no obligation quotation.

Worked on 'TV' and 'Celebrity D.I.Y.' programs, plus 'If it's Broke Fix It', Ryobi and Aviva promotional videos.

**Spot on Building & Property Maintenance Services**



Call on Barry Tongue 07966 458620  
 Tel: 01630 638758 or email: [baz@cobweb.fsnet.co.uk](mailto:baz@cobweb.fsnet.co.uk)

**GREGORY PLUMBING**  
 FOR ALL YOUR PLUMBING REQUIREMENTS



**MARK GREGORY-CADMAN**  
 YOUR LOCAL PLUMBER

01952 933394  
 07860 748546

[MAGC1969@HOTMAIL.CO.UK](mailto:MAGC1969@HOTMAIL.CO.UK)  
 21 OAKWORTH CLOSE, TELFORD

# Welcome to Newport

Newport is a beautiful market town with notable historical buildings, landmarks, fantastic independent shops and boutiques, traditional pubs, cafes and more. Discover more on our Visitor Experience page at; <http://bit.ly/1hj17C>

- P** **Free (Official) Car Parks:** Water Lane East, Victoria Park, Stafford Street, New Street
- Free High Street Disabled Parking:** There are 3 official designated areas
- WiFi** **Free Wi-Fi Hot Spots:** Waitrose Newport, Gourmet Pasty Co., Guneros Sandwich Bar, The Barley, Costa Coffee, Smallwood Lodge
- Shopping** **Newport Indoor Market Hall:** See Markets page for general opening times
- £1** **Banks/Building Societies & ATMs:** Lloyds Bank (1) Yorkshire BS (2), HSBC (3), Barclays (4), Nationwide (5), NatWest (6), Co-operative (7)
- S1** **Public Services:** Post Office (1), Library/First Point Newport (2), Newport Swimming Pool (3)
- 1** **Schools:** Adams' Grammar (1), Newport CofE Juniors (2), Burton Borough (3), Newport Infants (4), Newport Girls' High (5), Moorfield Primary (6), SS Peter & Paul Catholic Primary (7), Castle House School (8)
- B1** **Bus Stops:** Stafford Street (1), High Street (2), High Street (3)
- +** **Medical Services:** Wellington Road Surgery, Linden Hall Surgery (Station Road)
- W1** **Places of Worship:** St Nicholas Church (1), Newport Baptist Church (2), Trinity Church (3), Catholic Church of SS Peter & Paul (4)
- ♿** **Public/Disabled Conveniences:** Situated in Stafford Street car park



## Mylocality discount card holders. Spend & Save Locally

- a** **Chetwynd End**
  - Shropshire Heat
- b** **Lower Bar - High St - New St**
  - Automotive Components
  - Ace Computer Systems
- c** **New St - High St - Square**
  - Cookshop Newport
  - Newport Complementary Health Clinic
- d** **St Marys St & Indoor Market Hall**
  - Daisy Chain • Duignan Phelps Optometrists
  - Kitty Kraft • Nova Cycles
  - Tranquility Beauty Salon
  - Guneros Sandwich Bar & Takeaway
  - The Orchard
  - Hey Judes and Cups & Wands (Market Hall)
- e** **Stafford St - High St**
  - The Barley Pub • Julia Price at Boughey House
  - Trend Accessories
- f** **Square - High St - Wellington Rd**
  - Wycherleys Dental Practice
  - HoneyComb Hair and Beauty Company
  - InSpirit Hair & Beauty
- g** **High St - Avenue Rd**
  - Samuels of Shropshire
  - What Women Want • Henshalls Insurance Brokers
- h** **Granville Ave**
  - NovaFord
- j** **Springfields Ind. Est. & Station Rd**
  - Carpet Loom & Newport Beds Ltd • The Ferns B & B
- k** **Audley Ave Enterprise Park (A518)**
  - Fish in a Box







## Next Month...

As you read this issue, we are already preparing a great selection of locally inspired features from around the area. *Including...*

### **School Report**

*Next month's featured report will be provided by Jenny Pritchard, Headteacher of Muxton Primary School.*

### **Never too old**

*50-year-old Newport man who has discovered it's never too late to go back to school.*

### **Shropshire Wildlife Trust**

*Sarah Gibson of Shropshire Wildlife Trust will be providing an interesting and informative feature.*

### **Reviews**

*Our monthly selection of product and app reviews. Covering new releases, technology and locally available products.*

### **Dates for your Diary**

*Plan your month with our diary of local meetings, courses, gigs and specialist events.*

## Keeping it Local

From Click & Collect to Local Discount Card to Local Jobs just visit [allaboutnewport.co.uk](http://allaboutnewport.co.uk)



### Shop Online with Local Retailers

Click & Collect means you can Buy Online and Collect in-Store at a time to suit you.

<http://bit.ly/mylocalshops>



### Shop & Save in Newport

You could be saving money on Ladies Fashion, Food & Drink and so much more...

<http://bit.ly/mylocality>

### Local Jobs Directory

Full and Part-Time Vacancies from around the local area. Businesses, it's **Quick, Simple and Free** to post your job vacancies online.

<http://bit.ly/mylocaljobs>

### Your Business in Print & Online

Is your current advertising delivering the right coverage for your business?

All About Magazine prints 15,000 copies, delivers over 13,000 door-to-door with the remaining dropped at selected pick-up points such as Waitrose Newport.

<http://bit.ly/allaboutmagazine>

### Online Advertising £10 p/yr

Recent studies suggest the top cited information searched for on local businesses were; products/services, phone numbers, location and opening times. **That's why all our Businesses get Google Maps, Opening Times** and space for their Products/Services.

<http://bit.ly/advertisingworks>





## Useful Numbers

Newport Town Council.....	<b>01952 814338</b>
Newport Town Library.....	<b>01952 382965</b>
Telford & Wrekin Council.....	<b>01952 380000</b>
Recycling, Rubbish and Litter .....	<b>01952 384384</b>
Planning Department.....	<b>01952 380380</b>
Council Tax and Benefits .....	<b>01952 383838</b>
Shropshire Council (std rate).....	<b>0345 678 9000</b>
Inland Revenue Helpline.....	<b>0845 900 0444</b>
Tax Credits Helpline.....	<b>0845 300 3900</b>
Police, Fire, Ambulance.....	<b>999</b>
Police (Non-emergency calls).....	<b>101</b>
Electricity (Emergency).....	<b>0800 052 0400</b>
Gas (Emergency).....	<b>0800 111 999</b>
Severn Trent Water (Emergency) .....	<b>0800 783 4444</b>
Shrop Doc .....	<b>0333 222 6655</b>
The Princess Royal Hospital.....	<b>01952 641222</b>
The Shropshire Nuffield Hospital.....	<b>01743 282500</b>
NHS Direct (Calls are Free).....	<b>111</b>
Newport Cottage Care Centre .....	<b>01952 820893</b>
Childs Ercall Jubilee Hall.....	<b>01942 840572</b>
Adams' Grammar School.....	<b>01952 386300</b>
Burton Borough School.....	<b>01952 386500</b>
Castle House School.....	<b>01952 811035</b>
CHerubS Nursery .....	<b>01952 811035</b>
Church Aston Infant School.....	<b>01952 386390</b>
Church Eaton Endowed (VA) Primary Sch .....	<b>01785 823089</b>
Edgmond Hall.....	<b>01952 810799</b>
Gnosall St Lawrence CoFE Primary School....	<b>01785 822391</b>
Harper Adams University.....	<b>01952 820280</b>
Haughton St Giles CoFE Primary School.....	<b>01785 780511</b>
Lilleshall Primary School.....	<b>01952 388430</b>
Moorfield Primary School.....	<b>01952 386470</b>
Muxton Primary School.....	<b>01952 387690</b>
Newport CoFE Junior School.....	<b>01952 386600</b>
Newport Girls' High School .....	<b>01952 797550</b>
Newport Infant School.....	<b>01952 386610</b>
Sheriffhales Primary School.....	<b>01952 460204</b>
SS Peter & Paul Catholic Primary School .....	<b>01952 386450</b>
St Peter's CoFE Primary Edgmond.....	<b>01952 811692</b>
St Marys CoFE First School & Nursery .....	<b>01785 841463</b>
Tibberton CoFE Primary School.....	<b>01952 387790</b>

## Opening Times

### Newport Town Council (The Guildhall Offices)

Monday - Friday 10am - 3pm, CLOSED Weekend

### Newport Library

Monday 10am - 4pm, Tuesday 10am - 5pm,  
Wednesday 10am - 6pm, Thursday CLOSED,  
Friday 9.30am - 5pm, Saturday 9.30am - 4pm

### The Linden Hall Surgery (Station Road)

Monday- Friday: 8am to 6pm,  
Tuesday evening: 6.30pm - 8.20pm  
Wed evening: 6.30pm - 8.20pm

### Wellington Road Surgery

Monday - Friday 8am - 6.30pm  
(Phone lines: 8.30am - 6pm - 01952 811677)

### Newport Post Office

Monday - Friday 7am - 5.30pm,  
Saturday 7am - 5pm, Sunday: 7.30am - 12noon

### Newport Heritage Centre

Saturday 10am - 2pm, CLOSED: Monday - Friday  
and Sunday

### Granville Community Recycling Centre

Grange Lane, Red Hill TF2 9PB

### March - October: Monday 8am - 4.30pm,

Tuesday 8am - 4.30pm

Wednesday - Thursday CLOSED,

Friday 8am - 4.30pm

Saturday 8am - 4.30pm, Sunday 8am - 4.30pm

Bank Holidays 8am - 4.30pm

### November - February: Monday 8am - 4.30pm,

Tuesday 8am - 4.30pm,

Wednesday - Thursday CLOSED,

Friday 8am - 4.30pm, Saturday 10am - 3.30pm,

Sunday 10am - 3.30pm

Bank Holidays - 10am - 3.30pm

### Telford Council Bin Days - <http://bit.ly/mybinday>

Staffs Council Bin Days - <http://bit.ly/staffsbinday>

# This month's Solutions and Answers are...

-	-	-	-	-	-	N	M	O	B	-	-	-	-	-	S	-
-	-	-	-	-	I	O	R	-	-	E	-	-	-	-	E	-
-	-	-	-	U	N	A	E	P	A	-	A	-	-	-	A	-
-	-	-	G	K	N	-	-	-	-	R	R	-	-	L	A	-
-	-	N	E	G	L	E	M	A	C	-	-	E	-	-	R	-
T	E	Y	U	O	L	L	I	D	A	M	R	A	G	B	-	L
P	N	T	-	-	-	-	-	-	-	-	-	-	E	I	I	-
-	A	A	G	-	-	-	-	L	-	-	Z	-	O	T	-	-
N	-	-	H	I	-	-	-	I	-	-	O	N	-	-	-	-
-	-	-	-	P	R	-	-	Z	-	-	O	-	-	-	-	-
-	-	-	-	-	E	A	-	-	A	-	-	R	-	-	-	-
-	-	-	-	-	-	L	F	-	R	O	-	A	-	-	-	-
D	O	L	P	H	I	N	E	F	D	P	-	G	-	-	-	-
-	-	-	-	-	-	-	-	E	P	-	N	-	-	-	-	-
S	N	A	K	E	-	-	-	-	I	-	A	-	-	-	-	-
-	-	-	-	-	-	-	-	-	H	-	K	-	-	-	-	-
-	-	-	-	-	-	-	-	-	-	-	-	-	-	-	-	-

1	4	7	5	2	3	6	8	9
9	8	2	7	1	6	3	5	4
3	6	5	4	8	9	1	7	2
6	9	8	1	7	4	5	2	3
7	5	4	3	9	2	8	1	6
2	1	3	8	6	5	4	9	7
5	3	1	2	4	7	9	6	8
4	2	9	6	5	8	7	3	1
8	7	6	9	3	1	2	4	5

9	7	6	2	5	1	4	3	8
2	1	3	6	8	4	7	5	9
4	5	8	7	9	3	2	6	1
6	9	4	1	3	7	5	8	2
1	8	7	4	2	5	6	9	3
3	2	5	8	6	9	1	7	4
7	6	1	9	4	8	3	2	5
8	3	2	5	1	6	9	4	7
5	4	9	3	7	2	8	1	6

SUDOKU 27

SUDOKU 28

There were **6 Differences** this month. Did you find them all?







## QUALITY CRAFT PRODUCTS

Décopatch - Airfix - Crafter's Companion -  
Pinflair - Modelling and more!



## Christmas at Kitty Kraft

Come to Kitty Kraft for a great Christmas whether shopping or joining our children's **Make-and-Do sessions**.

Call Emma to reserve your space.

Mon, Tues, Weds 21-23rd Dec 1-3pm.

Not forgetting **Santa is visiting** to wish everyone a happy Christmas Sat 12 & 19th Dec 11-2pm



### Kids Kraft Klub

Every Friday in November 4-5pm. (Please book)

### Craft Club

Join us every Monday at 7pm to 9pm in Kitty Kraft shop St. Mary's Street, Newport.

All equipment and instruction will be supplied.



14a St. Mary's Street, Newport, Shropshire, TF10 7AB  
Call: Emma on 01952 820940 [www.kittykraft.co.uk](http://www.kittykraft.co.uk)

# MyLocality

your local discount card

Use your card to  
Shop & Save in Newport



ACE Computer Systems



Trend Accessories



Kitty Kraft

Shop & Save in Newport with these and other MyLocality partners. Latest offers at [www.mylocality.me](http://www.mylocality.me)

**Only £10. No Renewal Fees! Buy yours from**  
Cookshop Newport • Daisy Chain • Hey Judes • NovaFord

- › Ace Computer Systems UK Ltd
- › Automotive Components Ltd
- › Carpet Loom and Newport Beds Ltd
- › Cookshop Newport
- › Cups and Wands
- › Daisy Chain
- › Duignan Phelps Optometrists
- › Fish in a Box
- › Guneros Sandwich Bar & Takeaway
- › Henshalls Insurance Brokers
- › Hey Judes
- › HoneyComb Hair and Beauty Company
- › InSpirit Hair & Beauty
- › Julia Price at Boughey House
- › Kitty Kraft
- › Newport Complementary Health Clinic
- › Nova Cycles
- › NovaFord
- › Samuels of Shropshire
- › Shropshire Heat
- › The Barley
- › The Ferns B & B
- › The Orchard
- › Tranquility Beauty Salon
- › Trend Accessories
- › What Women Want
- › Wycherleys Dental Practice



By shopping locally you're helping to support your local High Street. Thank you.